



WORLD  
RESOURCES  
INSTITUTE

# WRI'S WORK ON URBAN BIODIVERSITY & NBS

*John-Rob Pool & Meltem Bayraktar*

---

# THREE URBAN NBS SCALING PLATFORMS

**URBAN  
SH/FT**

**URBAN WATER  
RESILIENCE IN  
AFRICA**

**Cities4Forests**

# URBANSHIFT CITY ACADEMY COURSES

## In person trainings



## Online capacity building courses

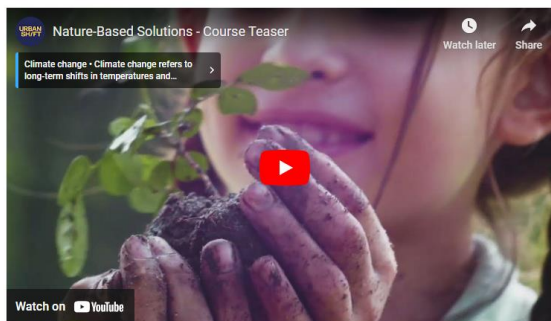
### NATURE-BASED SOLUTIONS

URBAN  
SH/FT

Explore how cities around the world are turning to Nature-based Solutions to tackle some of their most pressing challenges. Find out about the key elements needed to implement contextually appropriate, multifunctional and cost-effective Nature-based Solutions in global South cities.

CONTENTS +

Click to enroll in: [English](#) | [Spanish](#) | [French](#) | [Portuguese](#) | [Bahasa Indonesia](#) | [Mandarin](#)



### URBAN BIODIVERSITY

URBAN  
SH/FT

Learn how cities can protect biodiversity and secure the benefits of healthy ecosystems for all residents. This course focuses on biodiversity strategy in the context of city priorities, constraints, and planning processes. It provides learners with tools they can use to integrate nature-supportive actions into wider urban practices.

CONTENTS +

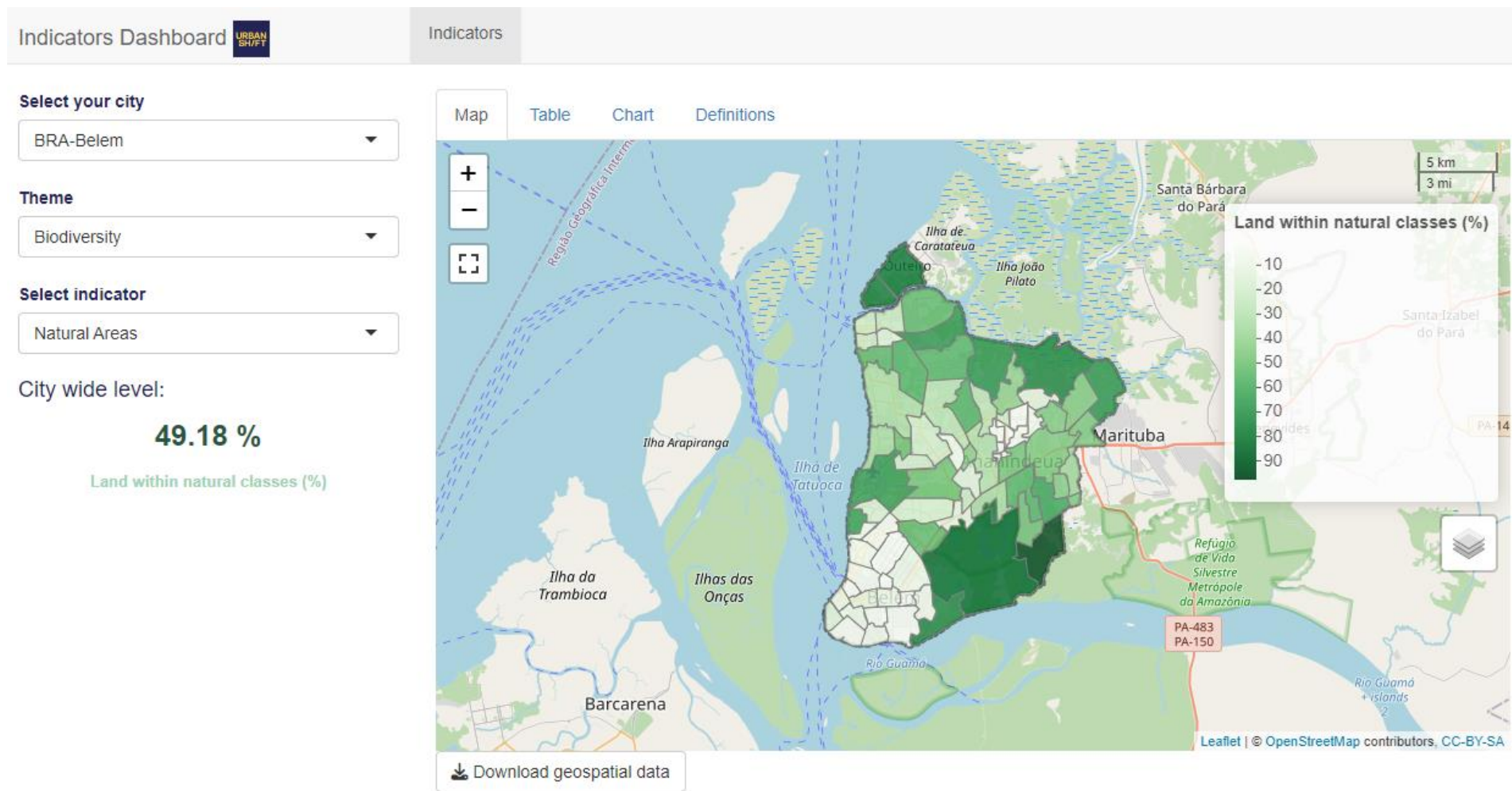
Click to enroll in: [English](#) | [Spanish](#) | [French](#) | [Portuguese](#) | [Bahasa Indonesia](#) | [Mandarin](#)



URBAN  
SHIFT

# GEOSPATIAL DATA DASHBOARD

<http://indicators.shiftcities.org/>





# Cities4Forests?



## Political Action & Engagement



- Building political support (untapped voices of Mayors)
- Resident engagement
- Sparking a global movement of cities

## Technical Assistance & Capacity Building



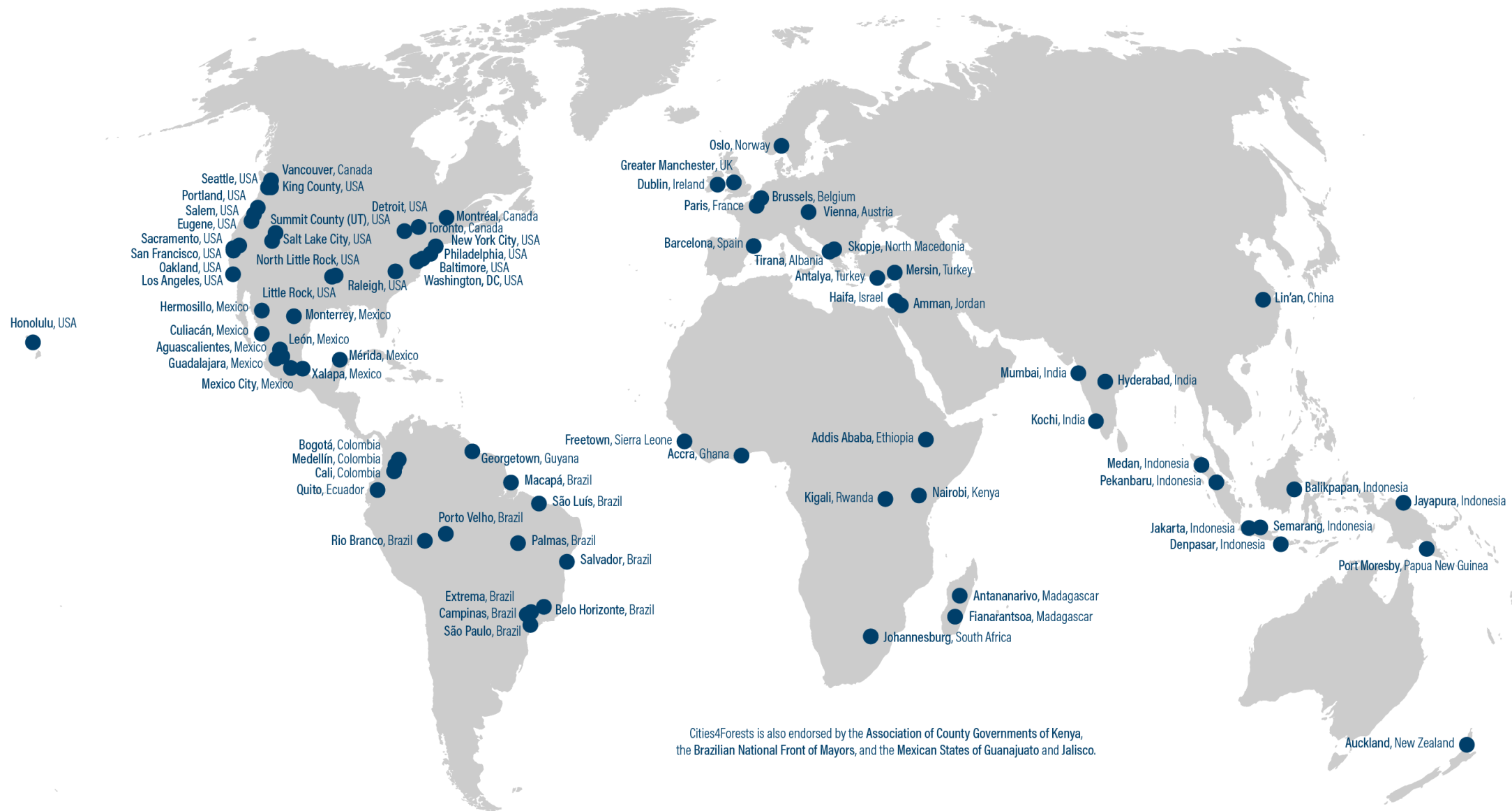
- Policy and planning
- Mapping, measuring, and monitoring
- Leveraging new technologies

## Economics, Finance, & Investment



- Economic analysis
- Enhancing project bankability and pipeline buildout
- Facilitating access to all forms of capital

# Eighty-seven member cities, and growing





# Better Forests, Better Cities

- Provides an evidence base for how forests benefit cities.
- Brings together the science on the benefits of forests at multiple scales for cities.





# New Guidance for Cities to Inventory GHG Emissions and Removals by Trees and Forests

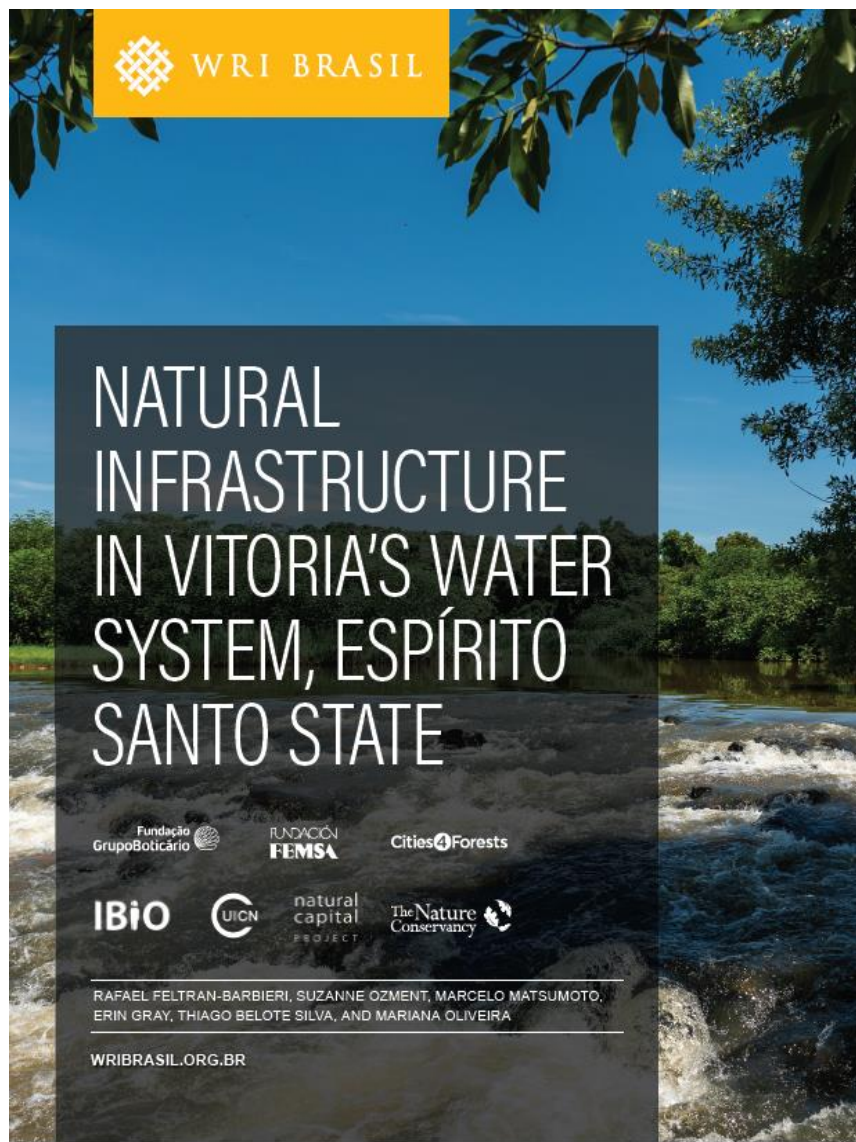


## *Global Protocol for Community-Scale Greenhouse Gas Inventories*

*Supplemental Guidance for Forests and Trees*







meioambientees • Seguir  
Vitória, Espírito Santo

meioambientees • Webinar organizado pela World Resources Institute (WRI Brasil) sobre segurança hídrica. 📺 realizado nesta terça-feira (10), apresentou o Programa Reflorestar como exemplo de restauração florestal. 🌱🌿

O Programa Reflorestar, já recuperou mais de 10 mil hectares 🌳 e mais de 10 mil hectares de florestas em pé reconhecidas com pagamentos por serviços ambientais (PSA) 🏡. Além de mais de 285 mil hectares de florestas, em regeneração natural, sendo monitoradas por imagens de satélite. 📡

WRI Brasil  
10 de ago. · 🌐

Uma nova publicação do WRI Brasil reúne os resultados econômicos da restauração florestal no abastecimen... Ver mais



WRI Brasil @WRIBrasil · Aug 10  
Um novo estudo do WRI Brasil, "Infraestrutura Natural para Água na Região Metropolitana da Grande Vitória", reúne os resultados econômicos da restauração florestal no abastecimento de água 📊  
wribrasil.me/PublicInfraNat

#InfraestruturaNatural #Florestas

WRIBRASIL.ORG.  
Investimento de 93 mi para em

971

Curtir

WRI Brasil Retweeted

Fundação Grupo Boticário  
@fund\_boticario

Logo mais, às 10h30, acompanhe o webinar "Florestas para a segurança hídrica – o caso do Espírito Santo: Oportunidades e benefícios da restauração florestal" de soluções baseadas na natureza para todo o país. Realização: @WRIBrasil

Translate Tweet



9:31 AM · Aug 10, 2021 · Twitter Web App

3 Retweets 1 Quote Tweet 5 Likes



Curtido por bcalixto e outras pessoas

wribrasil Estados brasileiros enfrentam o pior período de seca já registrado. Recuperar florestas potencializa a eficiência de infraestruturas convencionais, aumentando a capacidade sazonal dos reservatórios e sistemas de abastecimento.

UICN-Sur  
9 de ago. · 🌐

É AMANHÃ!

Nesta terça-feira, 10/08 às 10h30, ocorr... Ver mais



# Natural Infrastructure in Vitoria's Water System; Espírito Santo State Adopts Priority Restoration Map to Guide Investment



- 2% voluntary water fee for watershed protection & green infrastructure
- >\$5m MXN (\$250k USD)
- Payments to 370+ forest landowners for conservation & restoration





First-ever Green Bond (\$31M) to Protect Forests for Drinking Water

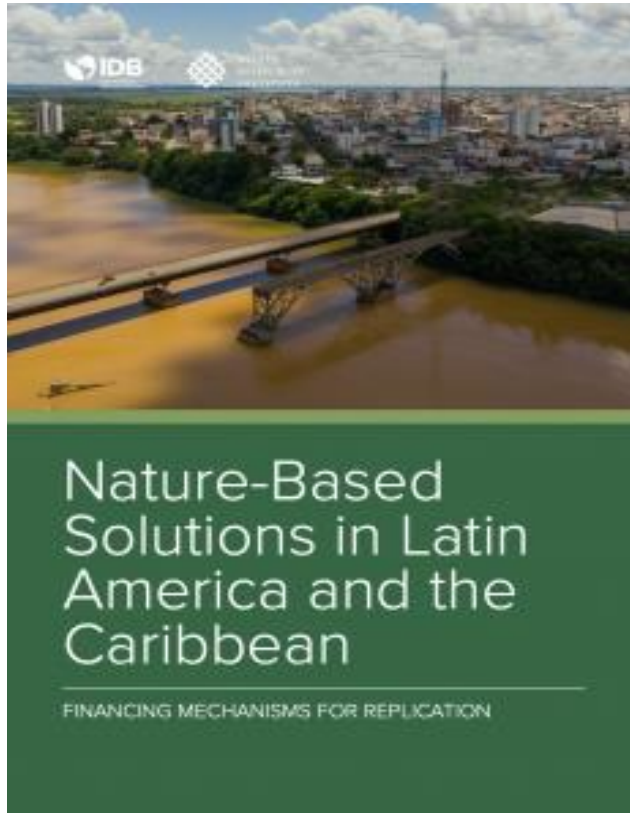




**Partnership with IDB to Scale NBS Investment in  
Latin America and the Caribbean**



# Unlocking NBS Investment in LAC and Sub-Saharan Africa



In partnership with:



AFRICAN DEVELOPMENT BANK GROUP



Cities4Forests

# WRI TÜRKİYE

Part of WRI Ross Center for Cities Program.



## OUR CORE FOCUS

WRI Türkiye has been working on **urban mobility**, **urban development** and **urban efficiency & climate** since 2005.

### URBAN MOBILITY

Improving quality of life, health, and opportunity in cities through sustainable and safe transport and urban design.

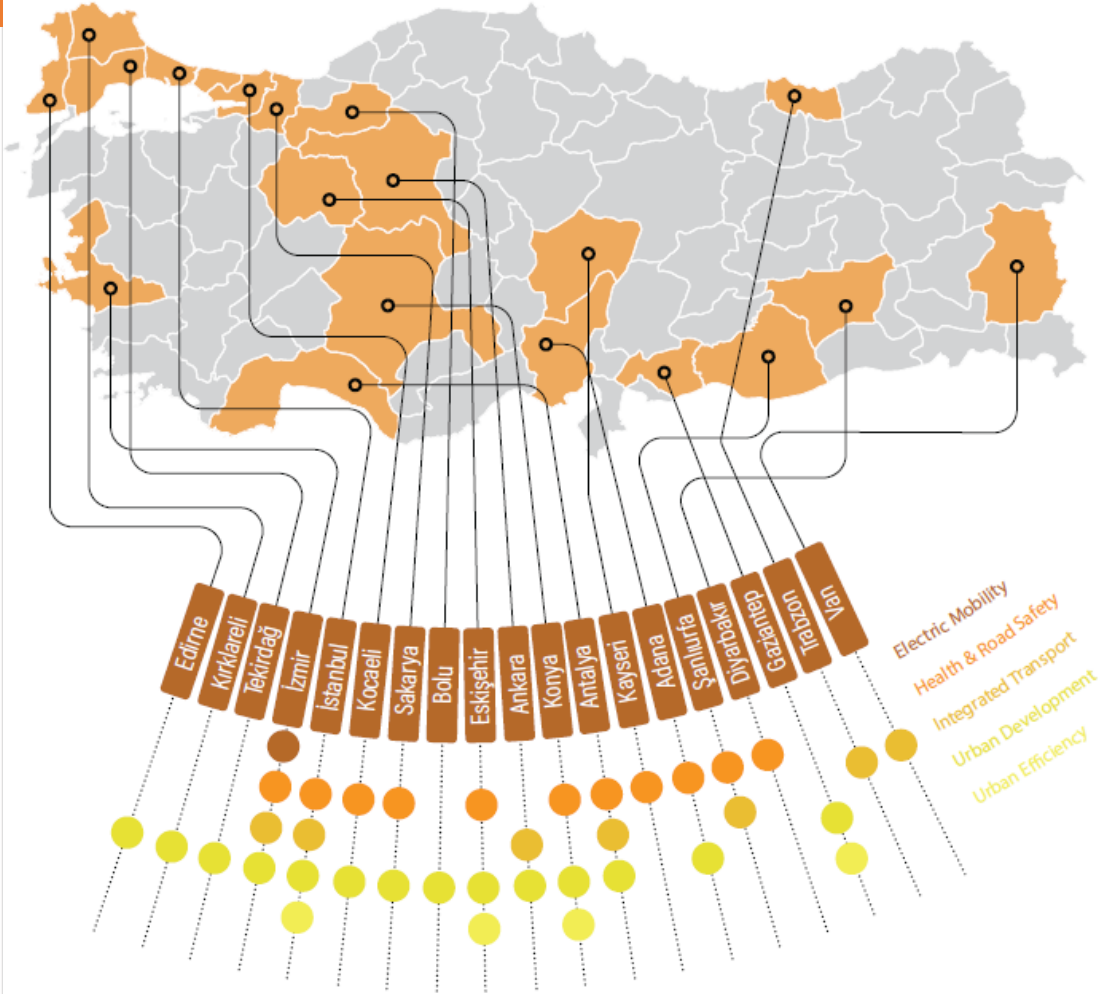
### URBAN DEVELOPMENT

Designing and influencing urban spaces that build resilience, improve health, and equitably connect people and opportunities.

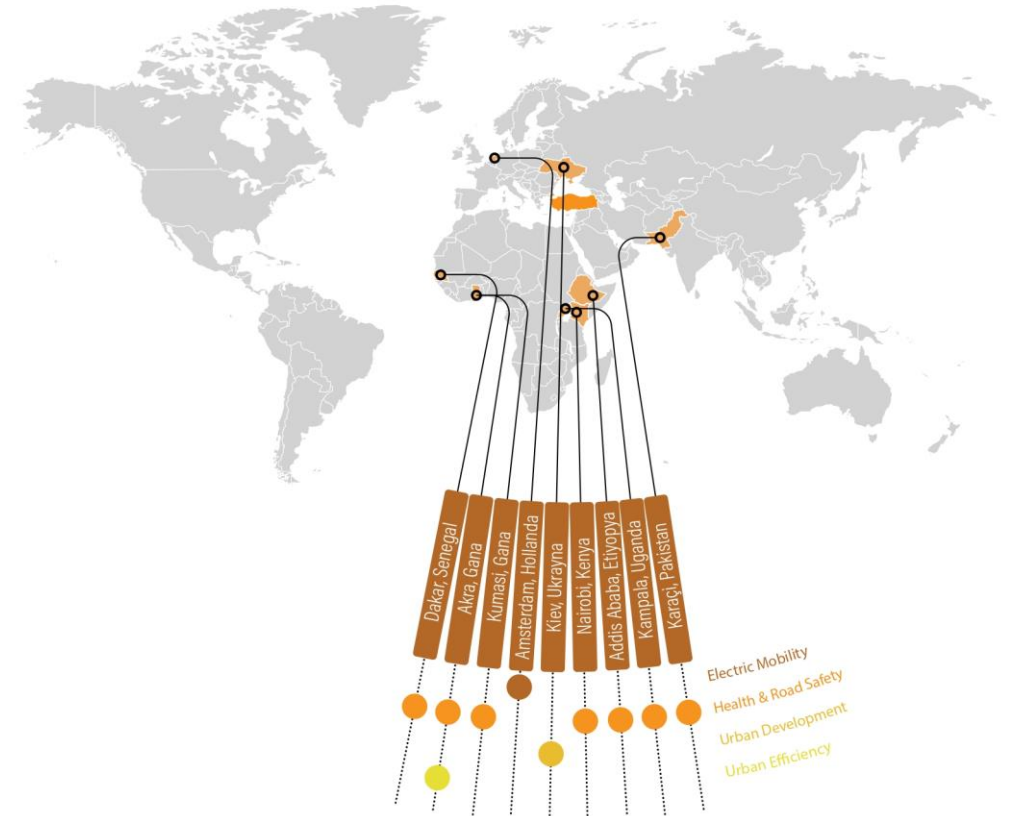
### URBAN EFFICIENCY & CLIMATE

Helping cities optimize, electrify, and decarbonize

## THE CITIES WE WORK IN



## THE COUNTRIES WE WORK IN





## SELECTED PROJECTS

### Zero Carbon Building Accelerator

- Funded by GEF
- Türkiye Building Sector Decarbonization Roadmap
- Konya and Gaziantep Building Sector Decarbonization Action Plans
- Addressed climate resilience in building sector

### Türkiye Sustainable Buildings Network

- Co-Funded by the European Commission
- Accelerate the green transformation of the building sector by establishing a pioneering network that fosters strong dialogue and collaboration among stakeholders in the Turkish building sector.
- A guideline for climate resilient buildings

### Nature-Based Solutions to Increase Community Resilience Against Climate-Induced Disasters (CORES)

- Co-Funded by the European Commission (Interreg VI-B) NEXT Black Sea Basin Programme
- Promote climate change adaptation and disaster risk prevention, resilience, taking into account ecosystem-based approaches
- Capacity building in the region

### Deep Dive Cities

- Neighbourhood Based Active Mobility Planning for İstanbul: caferağa neighbourhood, Kadıköy
- Outcome: Increasing the percentage of trips made by active transport in İstanbul by 5% - 10% with the support of the neighborhood-base active mobility planning project. This shift in modal share also helps the city with emission savings.