



WORLD
RESOURCES
INSTITUTE

PLANNING & POLICY FOR URBAN EMISSIONS REDUCTION

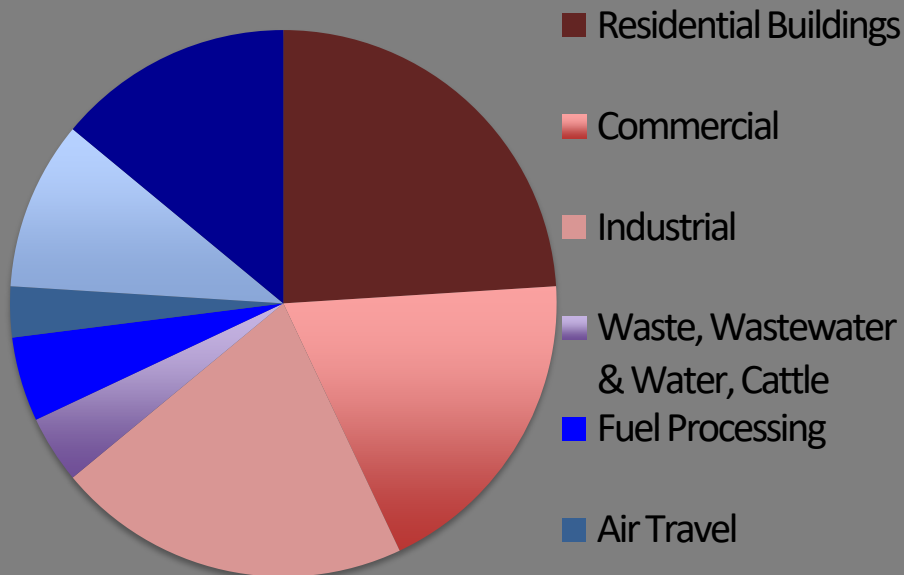
GLOBAL PLATFORM ON SUSTAINABLE CITIES - 2017

JESSICA SEDDON & ERIC MACKRES, WRI ROSS CENTER FOR SUSTAINABLE CITIES, WORLD RESOURCES INSTITUTE (WRI)

Photo : Andrew Stokols

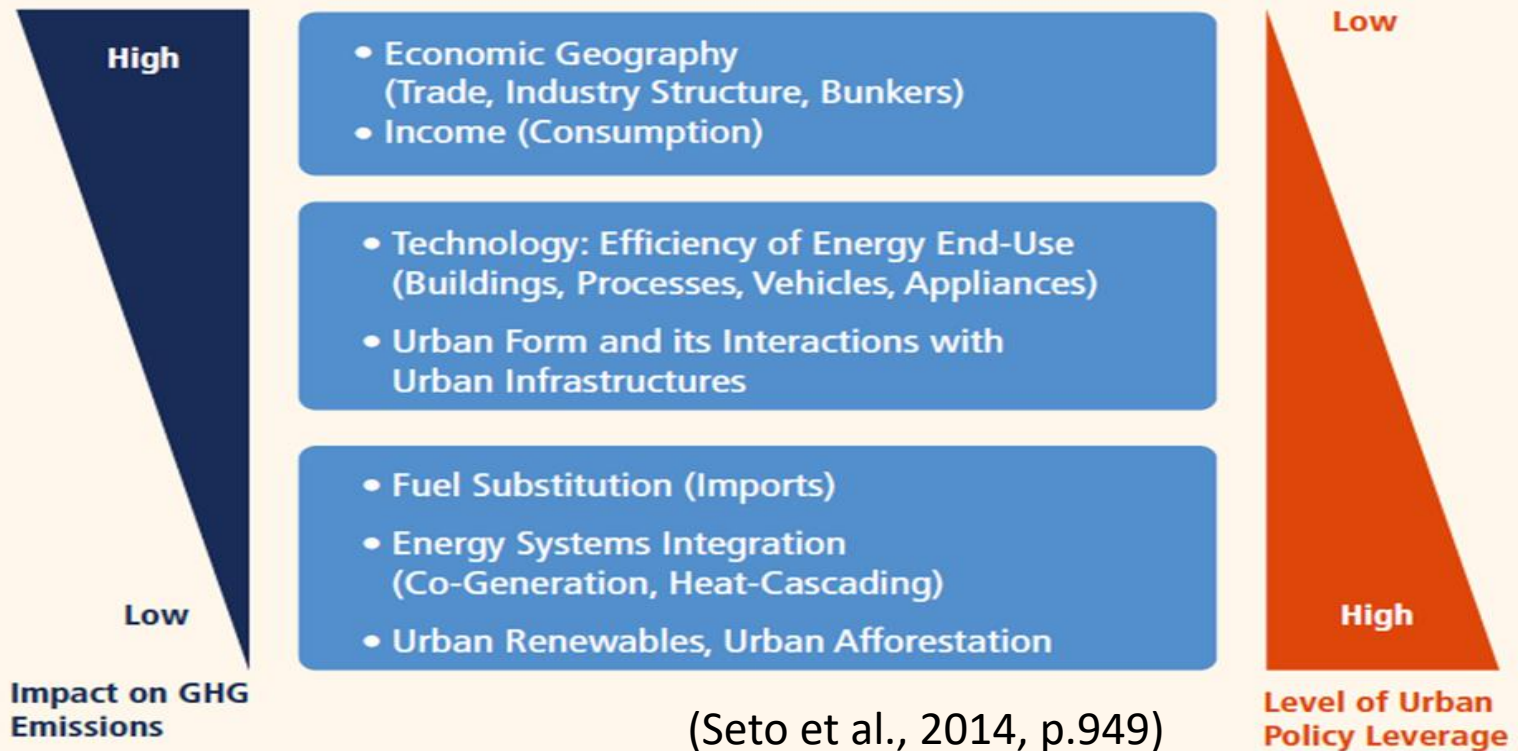


CHALLENGE I: “Urban” Emissions are only part of the picture.



Delhi: Territorial and Transboundary (Blue) Emissions
Chavez, et al (2012)

CHALLENGE II: City Actions are only part of the picture.



(Seto et al., 2014, p.949)

CHALLENGE III: Policy & Planning are one of many dynamics shaping cities

Three Challenges

Three Forces

Sovereign Authority:

Rule of law, uniquely legitimate enforcement power, statement of public and social compact - but depends on effective state to affect ground realities.

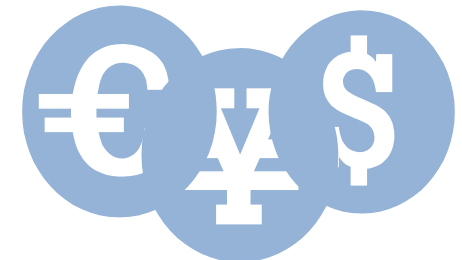
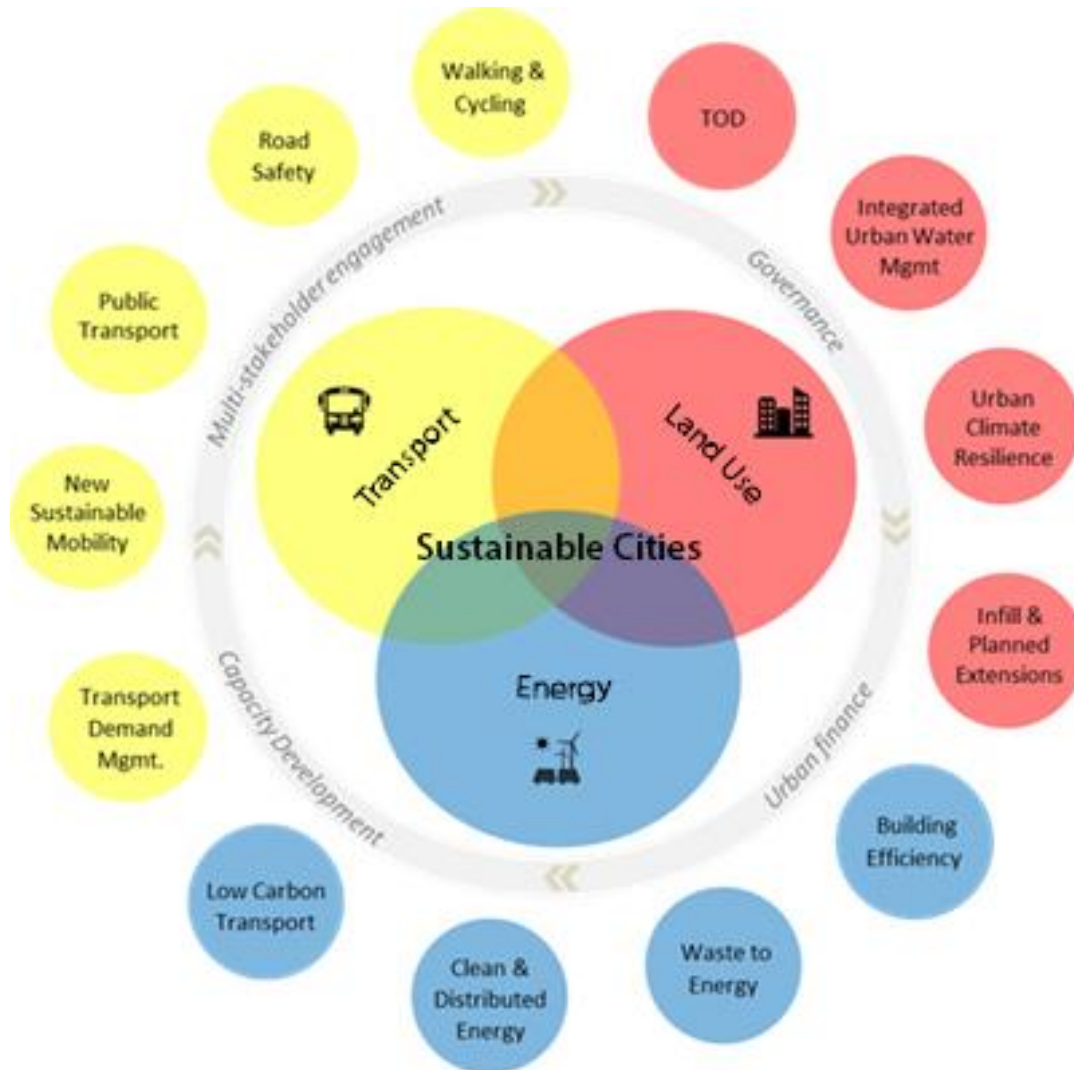
Markets:

Decentralized, dynamic, flexible, innovative strategies to produce outcomes – as long as they can be measured and converted to financial terms.

Community Action:

Invokes altruism, generosity, resilience, companionship – but can also be exclusionary, oppressive, and particularistic.

WRI'S ENGAGEMENT MODEL WITH CITIES: SOLUTIONS AS ENTRY POINTS, CROSS-SECTOR COALITIONS FOR SUSTAINED IMPACT





**Building Efficiency
Accelerator**



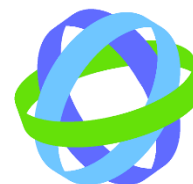
**GLOBAL ENERGY EFFICIENCY
ACCELERATOR PLATFORM**

City Partnerships Accelerating Action on Sustainable Buildings

Eric Mackres, Manager, Building Efficiency - WRI Ross Center for Sustainable Cities











WORLD
RESOURCES
INSTITUTE



WORLD
GREEN
BUILDING
COUNCIL

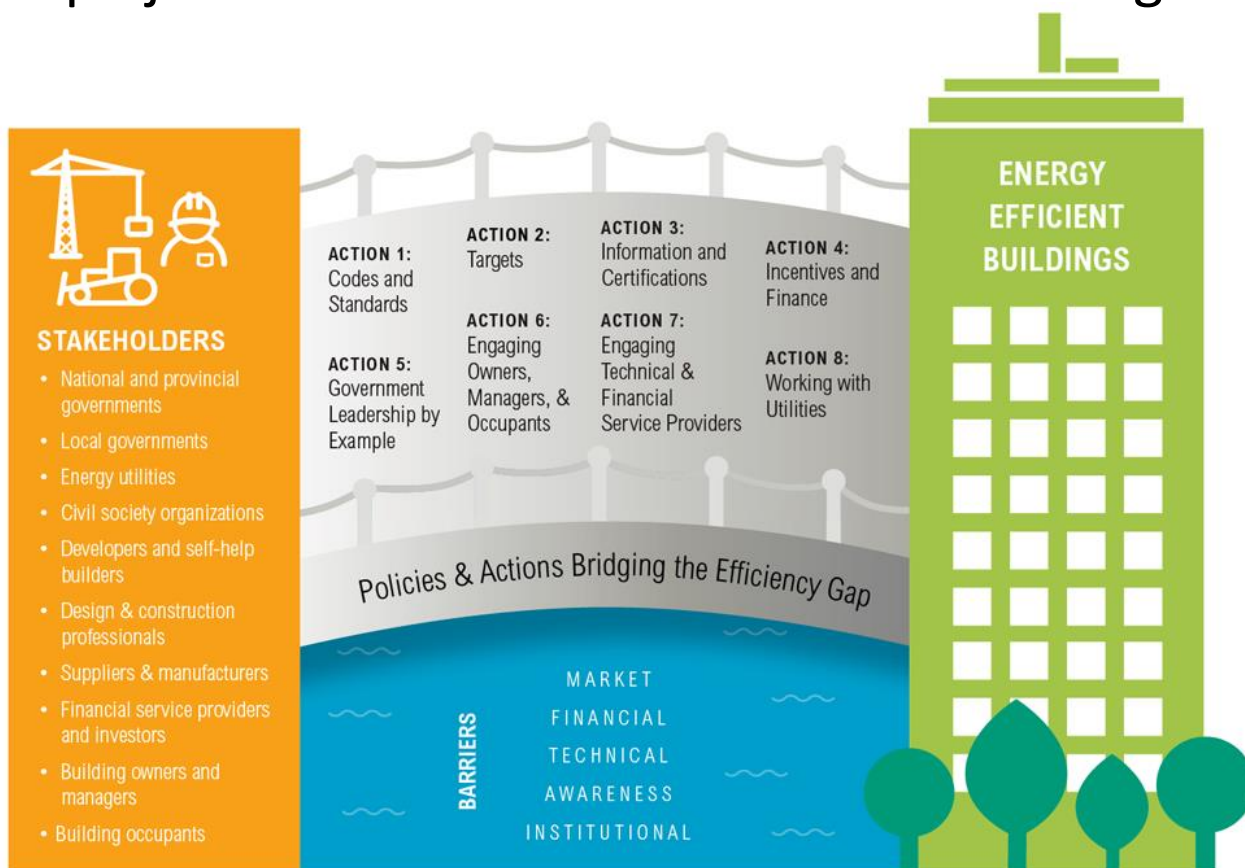


Various urban leaders influence action at points in the building lifecycle

NEW BUILDINGS			EXISTING BUILDINGS				
 Land Use/ Planning	 Design	 Construction	 Sale or Lease	 Tenant Build-Out	 Operations & Maintenance	 Retrofit	 Demolition & Deconstruction
Local governments	Design & construction professionals	Design & construction professionals	Buildings owners and managers	Buildings owners and managers	Buildings owners and managers	Buildings owners and managers	Design & construction professionals
Developers and self-help builders	National and provincial governments	Building investors	Developers and self-help builders	Building occupants	Energy utilities	Building investors	Buildings owners and managers
	Local governments	Suppliers & manufacturers	Building occupants	Design & construction professionals	Building occupants	Building occupants	
						Design & construction professionals	

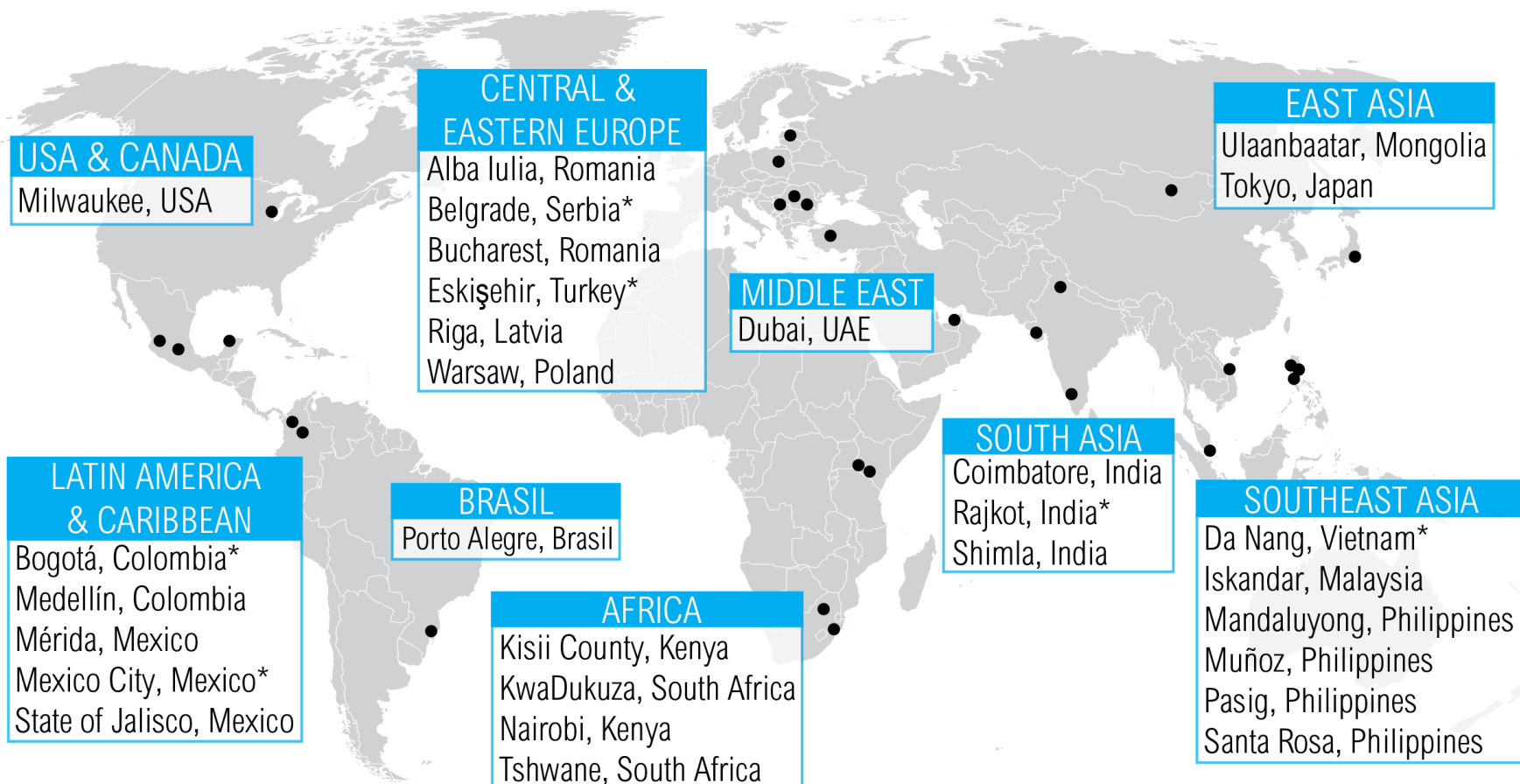
Acceleration of building efficiency actions

New visions and partnerships, built around public-private collaboration, address barriers to action, enable implementation of ambitious policies and projects and avoid lock-in of inefficient buildings.



Source: World Resources Institute (2016)

BEA Partner Jurisdictions



*City selected for "Deep Dive" engagement

What are cities signing up to do?

Overarching commitment:

double the rate of building energy efficiency by 2030 in targeted sector within the jurisdiction

Implement one
enabling **policy**

Policy

Implement one or more
pilot **project**

Project

Track and report progress,
and **share experiences**
with other cities

**Tracking &
communication**



Building Efficiency Accelerator (BEA) Global Partners

Coordinating partner:



WORLD
RESOURCES
INSTITUTE

WRI ROSS CENTER FOR
SUSTAINABLE
CITIES

NGOs/Associations/Multilaterals:



WORLD
GREEN
BUILDING
COUNCIL



World Business Council for
Sustainable Development



International
Energy Agency



International
Finance Corporation
WORLD BANK GROUP



BUILDINGS
PERFORMANCE
INSTITUTE
EUROPE

PIONEERED BY THE
ROCKEFELLER FOUNDATION

100



Service Providers/Companies:



What does the BEA provide?

**Local action
prioritization process**



Collaborative, multi-stakeholder assessments and workshops to define and prioritize policies and projects.

**Tools, expertise and
solutions**



Technical support through trainings, tools. Access to network of subject matter experts and service providers.

Funding opportunities



Connect projects in need to financial partners who can provide funding to efficiency actions.

**International
recognition and
collaboration**



Recognition of efficiency actions at international events. Knowledge sharing through a global network of peers.

Case Study: Mexico City

- **Sept. 2014:** Commitment from Mexico City gov't to:
 - (1) Implement building energy code; (2) Retrofit public buildings
- **March 2015:** Launch workshop for common vision
 - 100 multi-stakeholder participants: city government, federal government, businesses, finance, civil society and consulting
- **2016-2017:** Action plan underway via Mexico City staff and local partner leadership, managed by WRI Mexico
 - **Oct. 2015:** Recommendations delivered on action by government and stakeholders, following workshops
 - **Dec. 2015:** Actions announced at COP 21
 - **June 2016:** Energy code adopted
 - **Dec 2016:** 4 public building audits complete
 - **April 2017:** Announce target to retrofit 30% of public bldgs
 - **Phase 2 ongoing:** code implementation capacity building, retrofitting, additional public buildings audits



Tanya Müller García, Secretary of the Environment, discussing Mexico City's leadership actions



Mayor Mancera at COP21 Buildings Day

Ripples of action - BEA as an implementation intermediary between global and local partnerships

