

ISTANBUL WILD
*"Protect and Develop
Urban Ecosystem"*

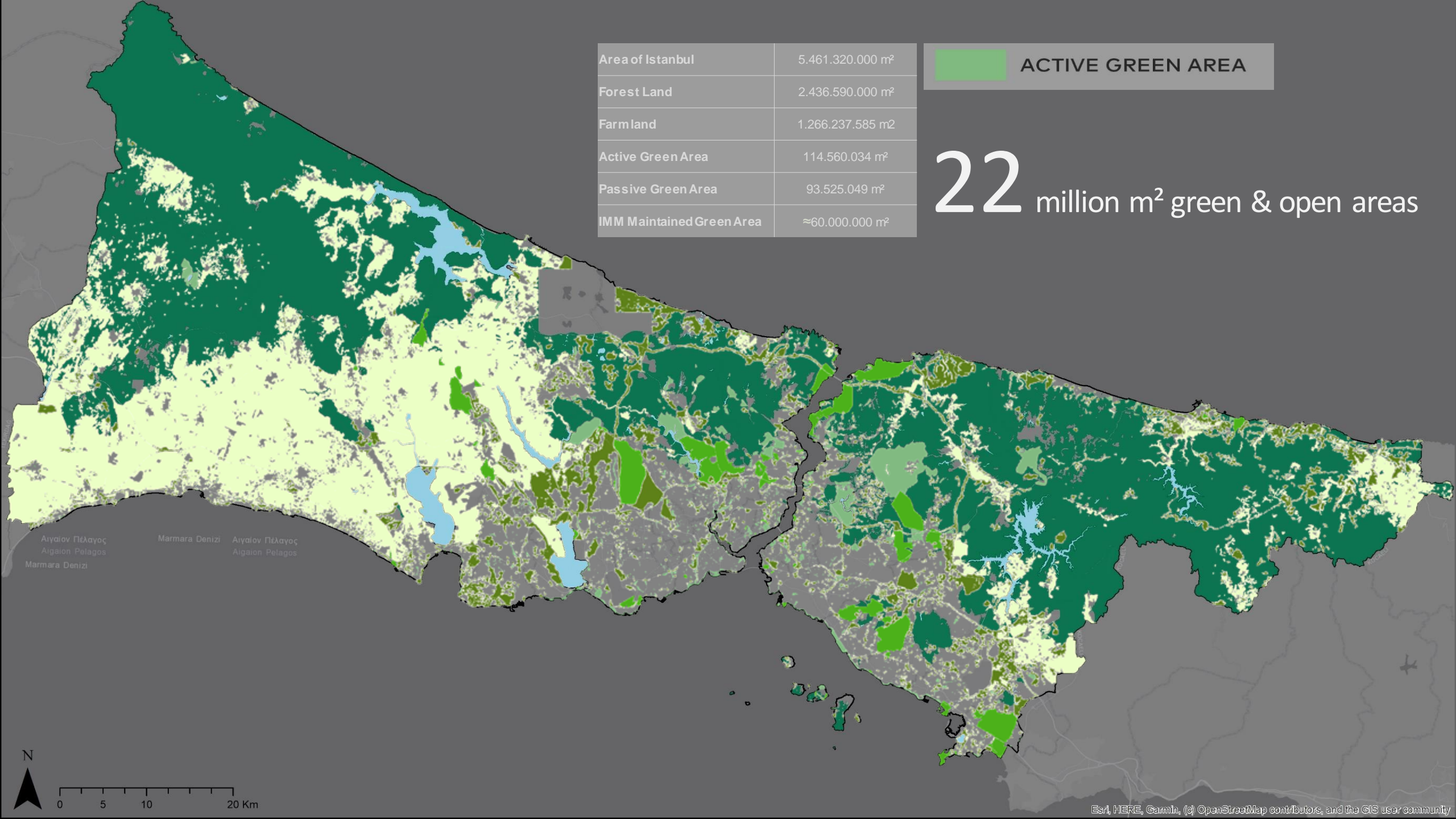


GREEN ISTANBUL
*"All Together for
a Greener Istanbul"*



ISTANBUL PLAY
*"From a City with Play Spaces
to a Playable City"*

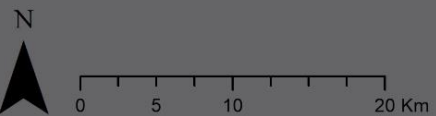




Area of Istanbul	5.461.320.000 m²
Forest Land	2.436.590.000 m²
Farmland	1.266.237.585 m²
Active Green Area	114.560.034 m²
Passive Green Area	93.525.049 m²
IMM Maintained Green Area	≈60.000.000 m²

 **ACTIVE GREEN AREA**

22 million m² green & open areas



BIODIVERSITY MAPPING

- 5 FRESHWATER BASINS
- 9 HISTORICAL GROVES
- 4 URBAN FORESTS

ENHANCING BLUE-GREEN INFRASTRUCTURE

- FLORA & FAUNA DETECTION
- LICHEN DETECTION
- SOIL ANALYSIS
- ECOLOGICAL RISK DETECTION
- ACTION PLAN FOR ECOLOGICAL SUSTAINABILITY

ECOLOGICAL CONSERVATION



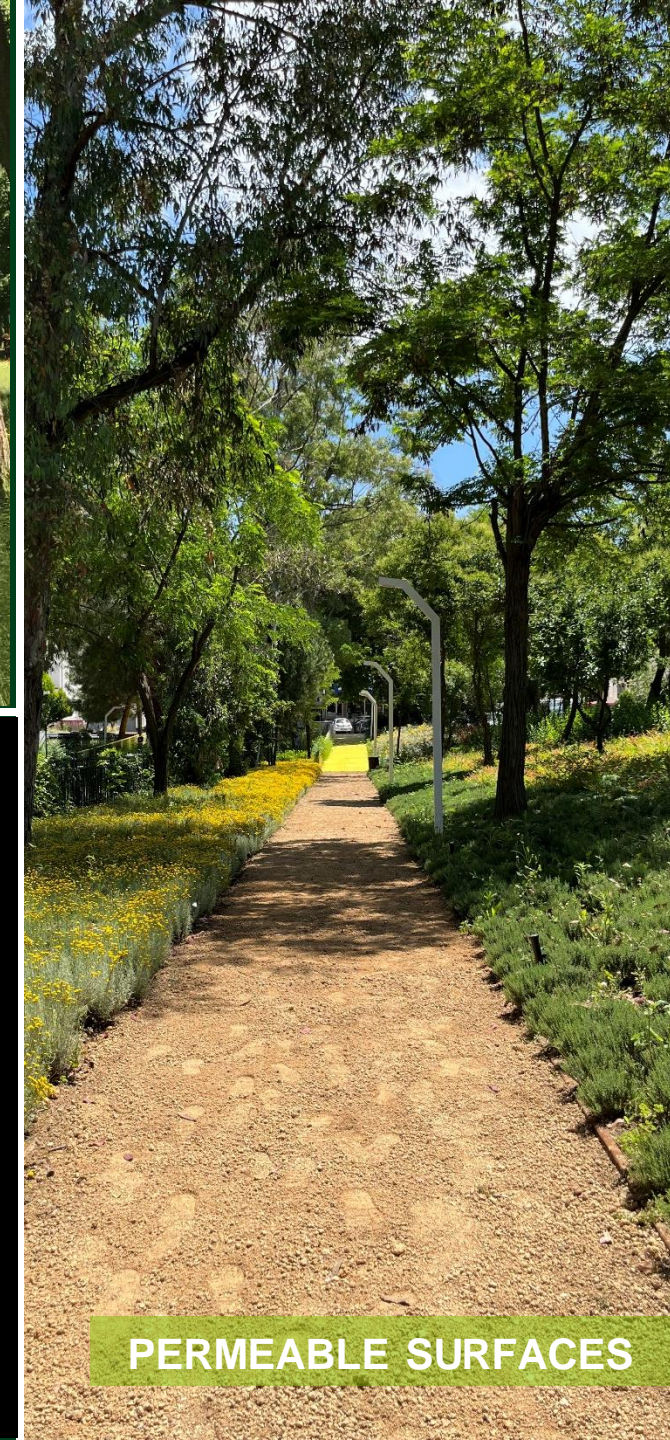
FLORA AND FAUNA
INVENTORY



POLLINATION PATHWAYS



LIGHT POLLUTION MITIGATION



PERMEABLE SURFACES

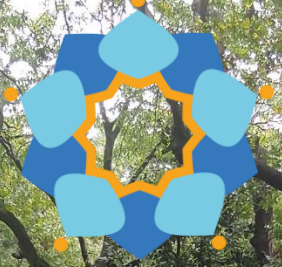
NBS APPLICATIONS



KÜÇÜK
ÇAMLICA
KORUSU



EMİRGAN
KORUSU



YILDIZ
KORUSU



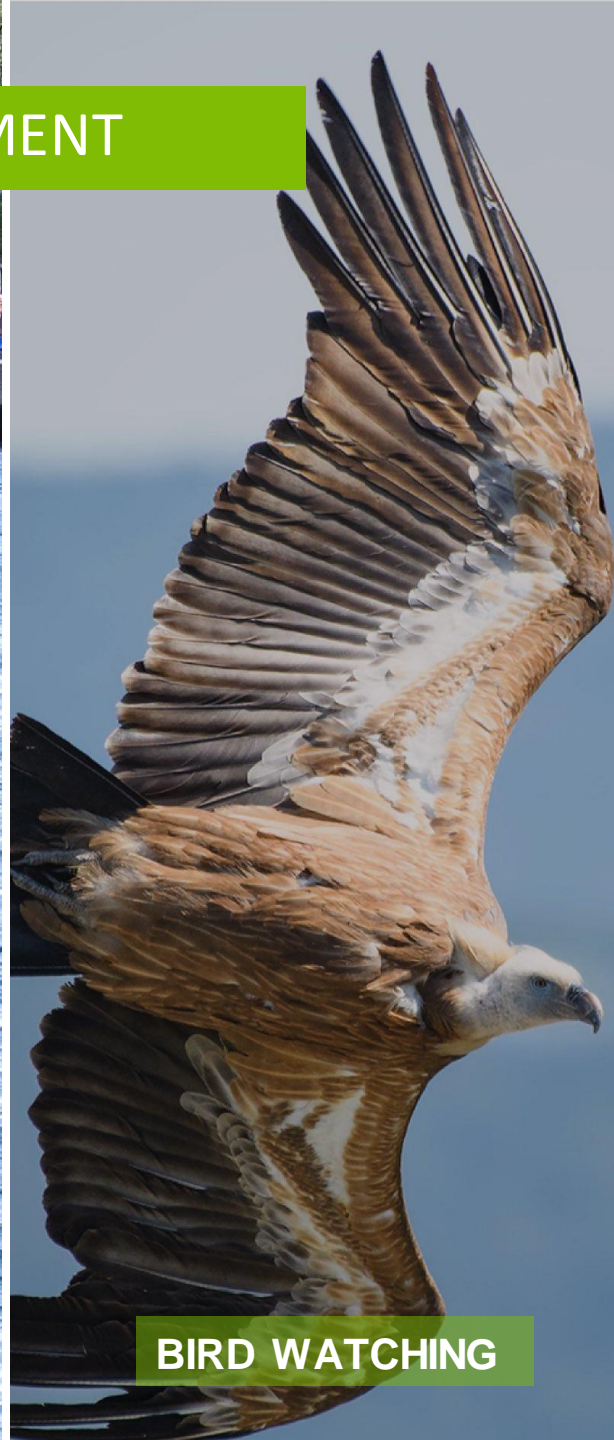
Green
Flag
Award



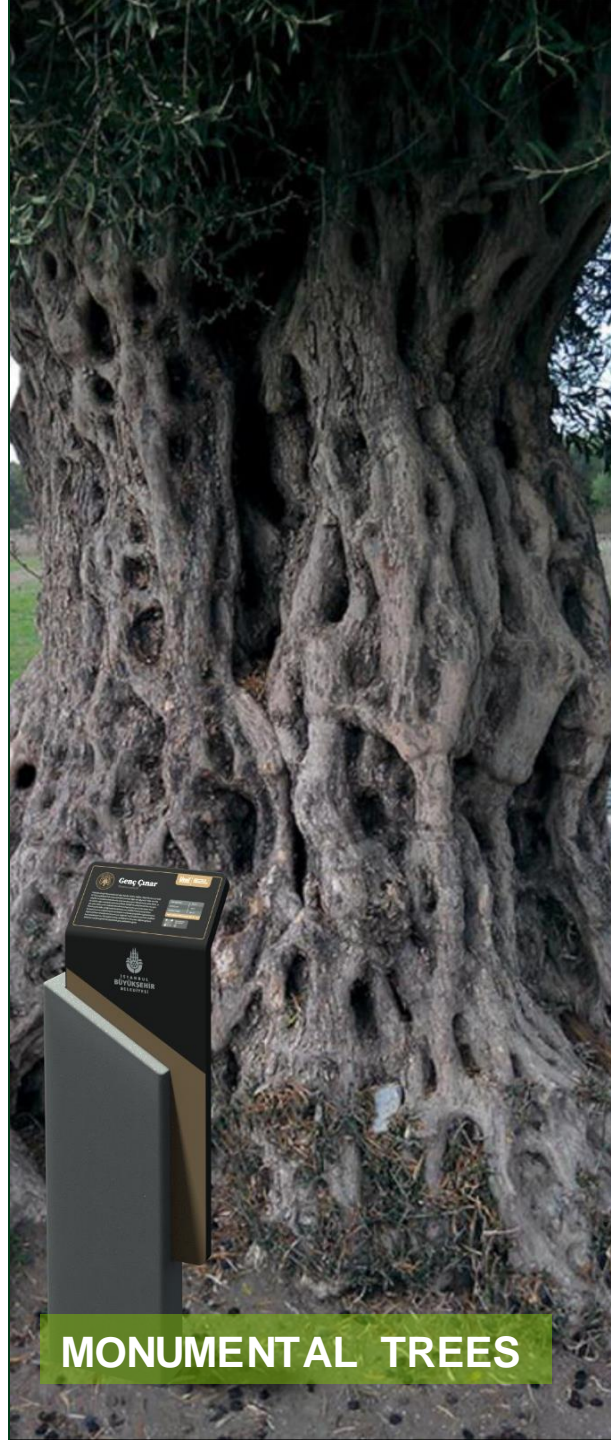
COMMUNITY ENGAGEMENT



DOLPHIN WATCHING



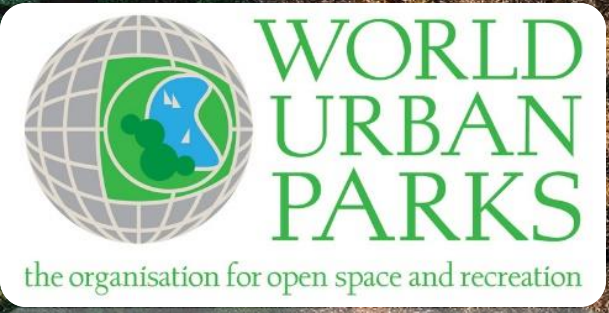
BIRD WATCHING



MONUMENTAL TREES



NATURE DEDECTIVE



Yesil
İSTANBUL



ATATÜRK
KENT ORMANI