



PLANNING FOR CLIMATE CHANGE

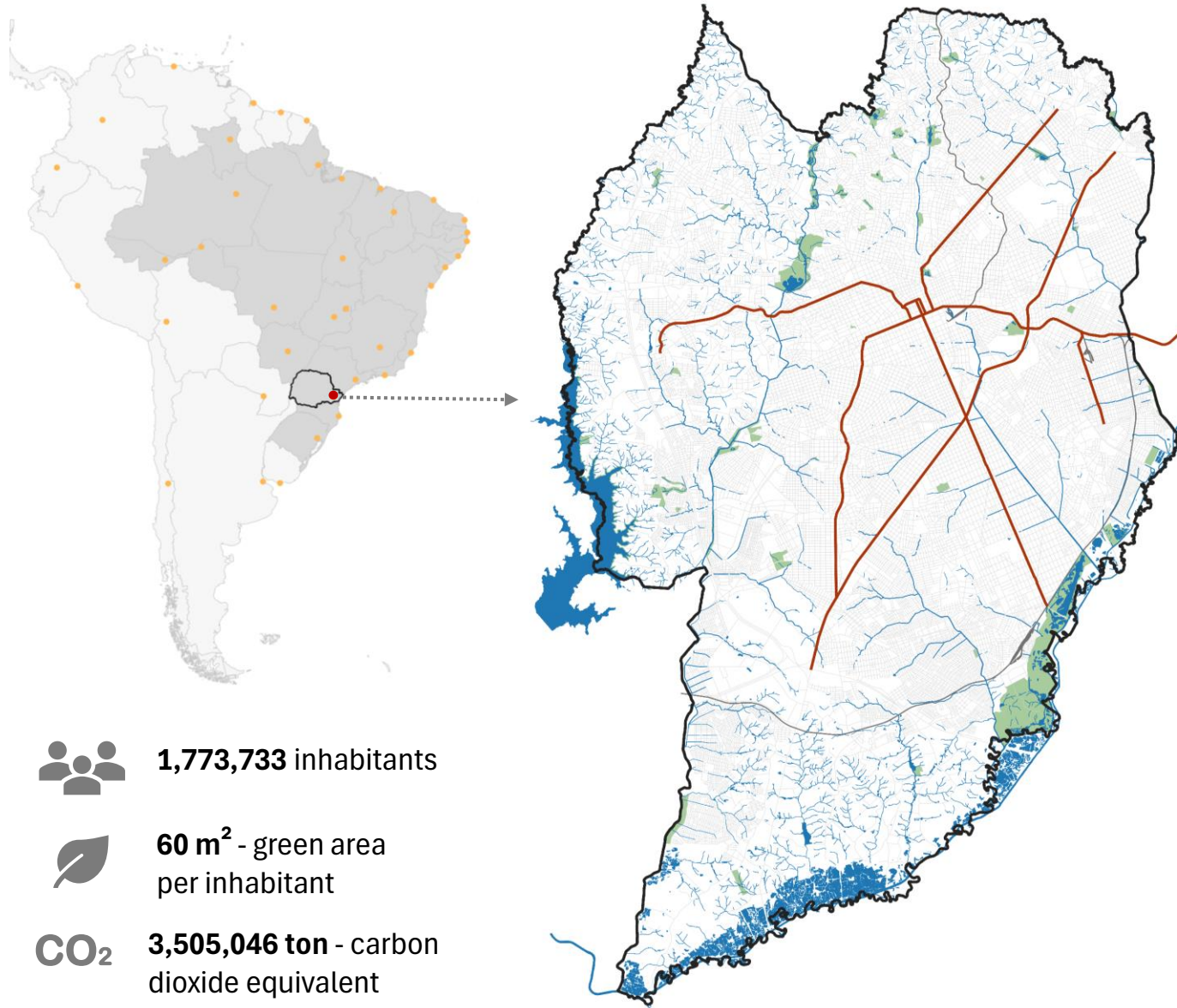
CURITIBA | BRAZIL



CURITIBA

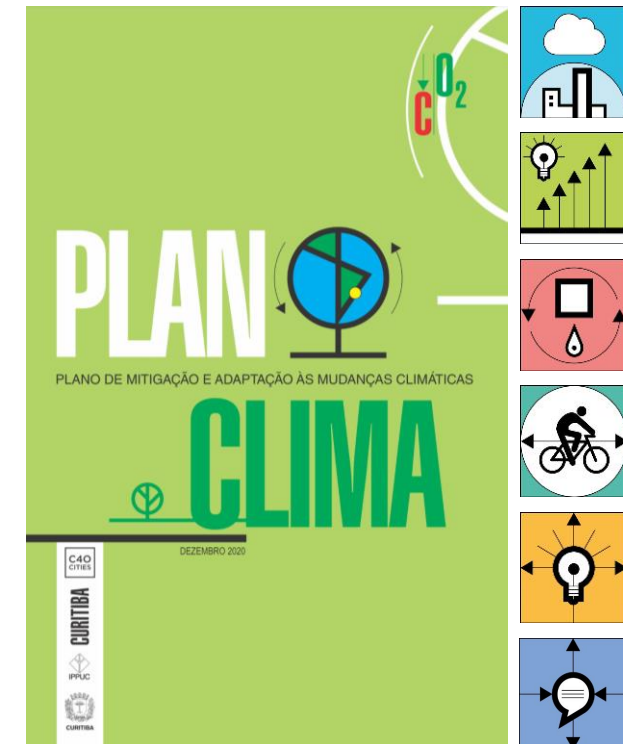


IPPUC



Curitiba Master Plan

- National public policies and international commitments
- Strategic Plans

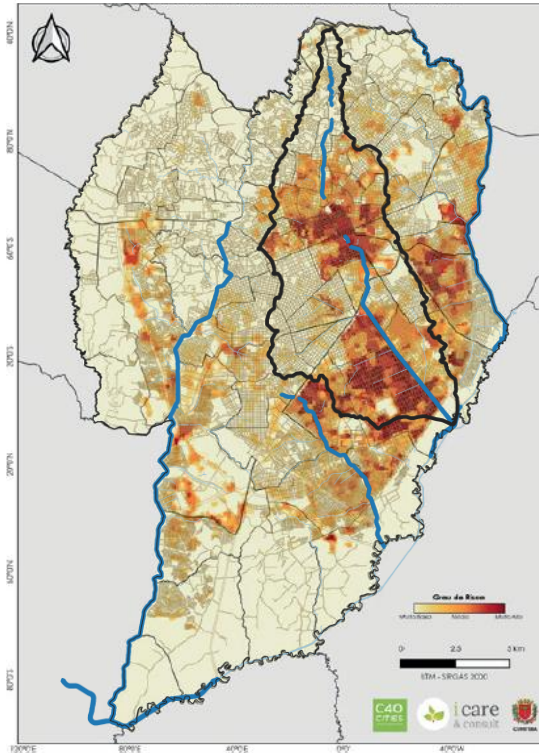
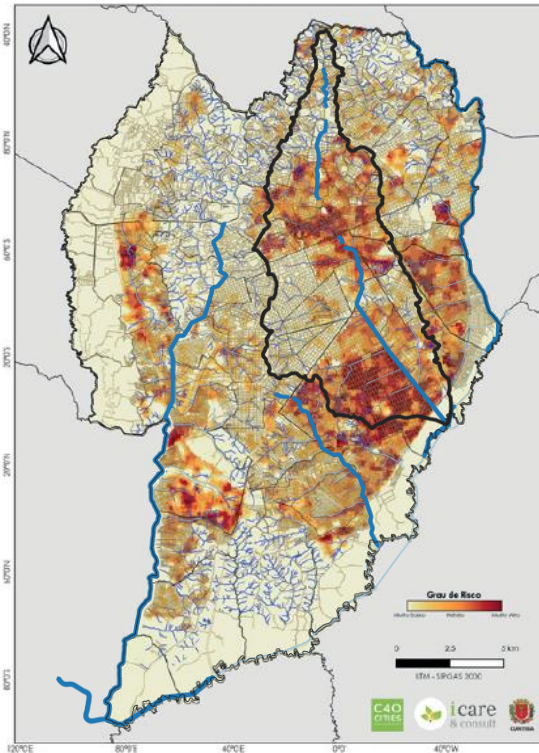
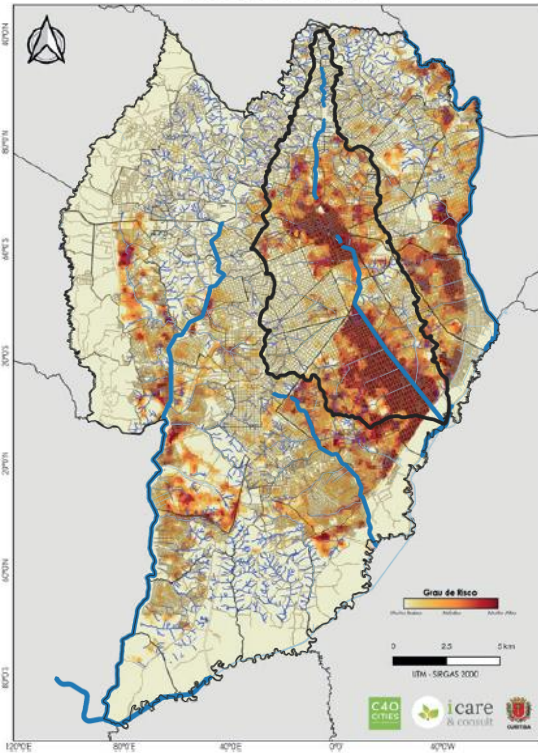


Flooding

Urban drainage problems

Heat waves

Drought



Increase of 1.2 °C in the average temperature, with a tendency to rise



Higher probability of extreme storm events with the potential to cause flooding



Increase in the frequency of consecutive days without rain, which may lead to long periods of drought



URBAN AND ENVIRONMENTAL QUALITY

ACTION 1 - Expansion of green areas to increase carbon stock.

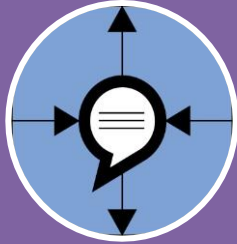
ACTION 2 - Permeability and improvement of drainage conditions, shading and natural cooling.

ACTION 3 - Rainwater management based on concepts of sustainable urban drainage and solutions based on nature.

ACTION 4 - Promotion of water security.

ACTION 5 - Establishment and regulation of criteria for resilient buildings.

ACTION 6 - Improvement and expansion of food and nutrition security policies.



GOVERNANCE

Structure:

- Deliberative
- Strategic
- Coordination and Operation



IPPUC



CURITIBA
SMMA



COHAB
Curitiba



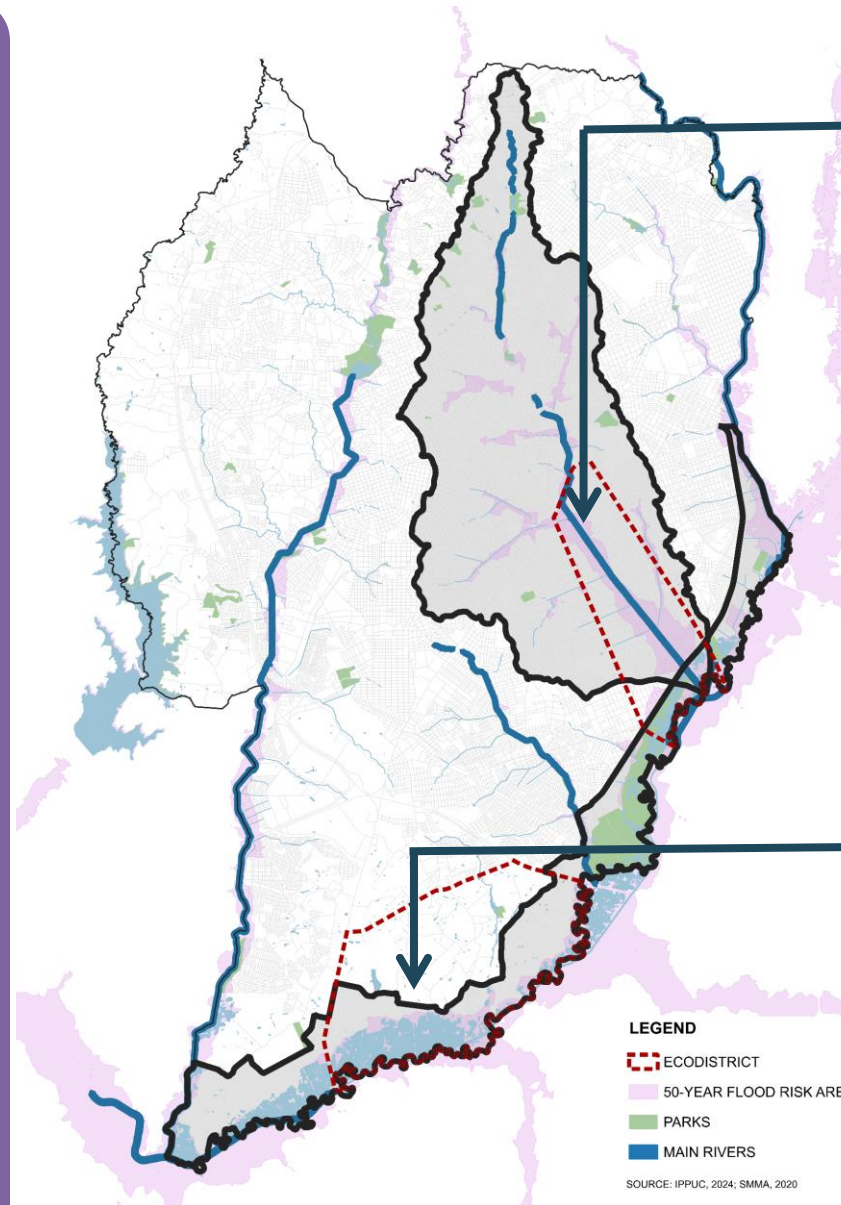
SANEPAR



AMEP
AGÊNCIA DE ASSISTÊNCIA METROPOLITANA DO PARANÁ



INSTITUTO
ÁGUA E TERRA



BELEM BASIS

FLOOD RISK AREA



48,000 inhabitants



19,000 households
370 households are in informal settlements



4,420 families with per capita income less than US\$ 130.00

WATER RESERVE



38,000 inhabitants



1,492 ha permanent preservation

LEGEND

 ECODISTRICT

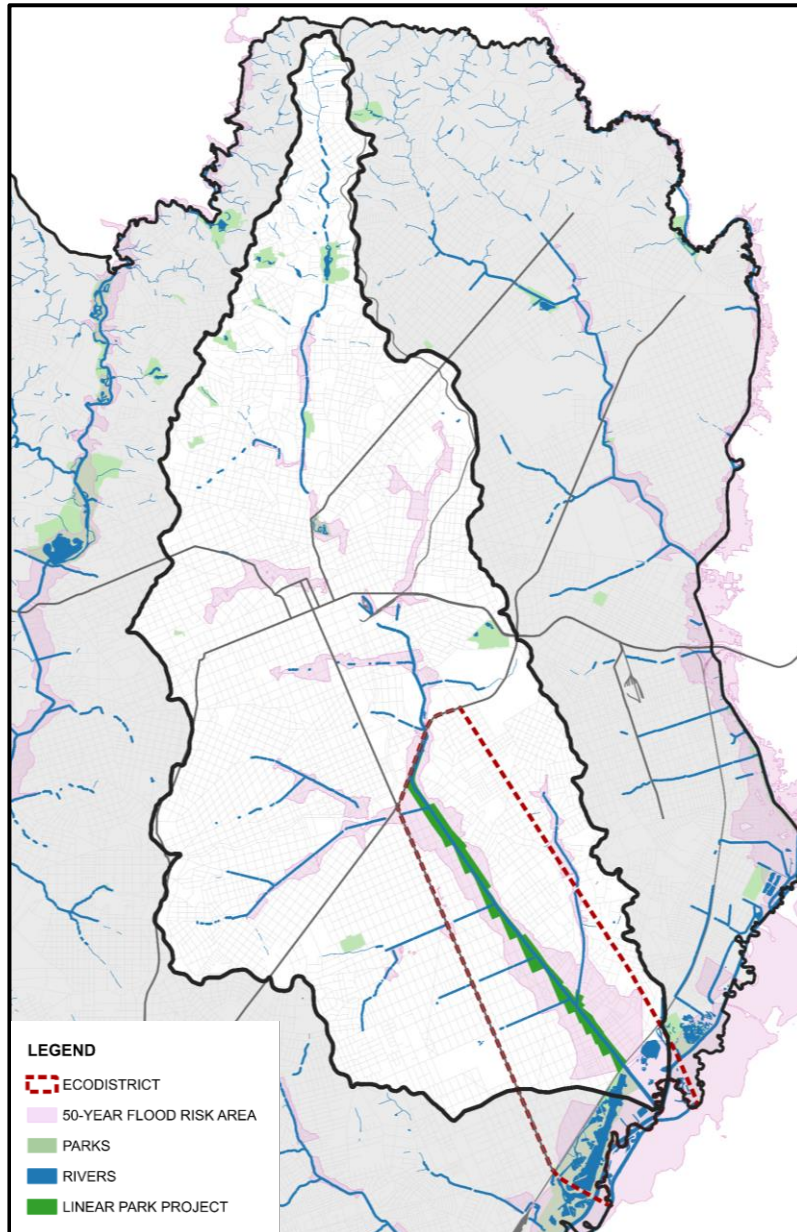
 50-YEAR FLOOD RISK AREA

 PARKS

 MAIN RIVERS

SOURCE: IPPUC, 2024; SMMA, 2020

BELEM BASIS RECOVERY



PROJECT CONCEPTUAL MATRIX

PILLARS

Nature-based Solutions

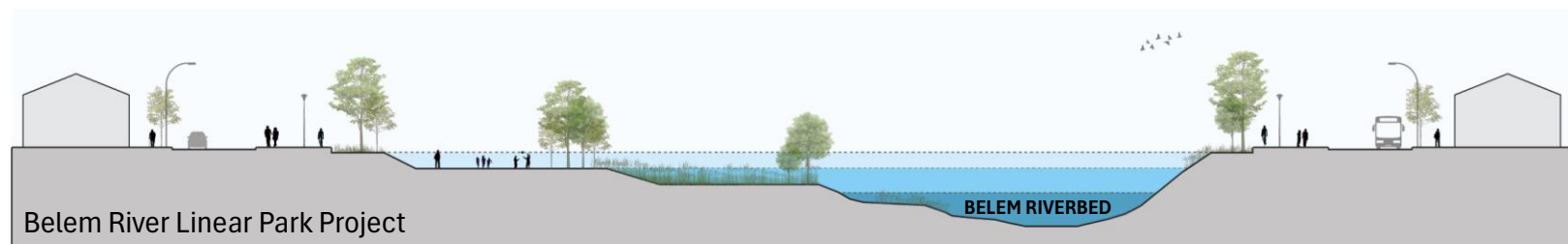
Resilient City

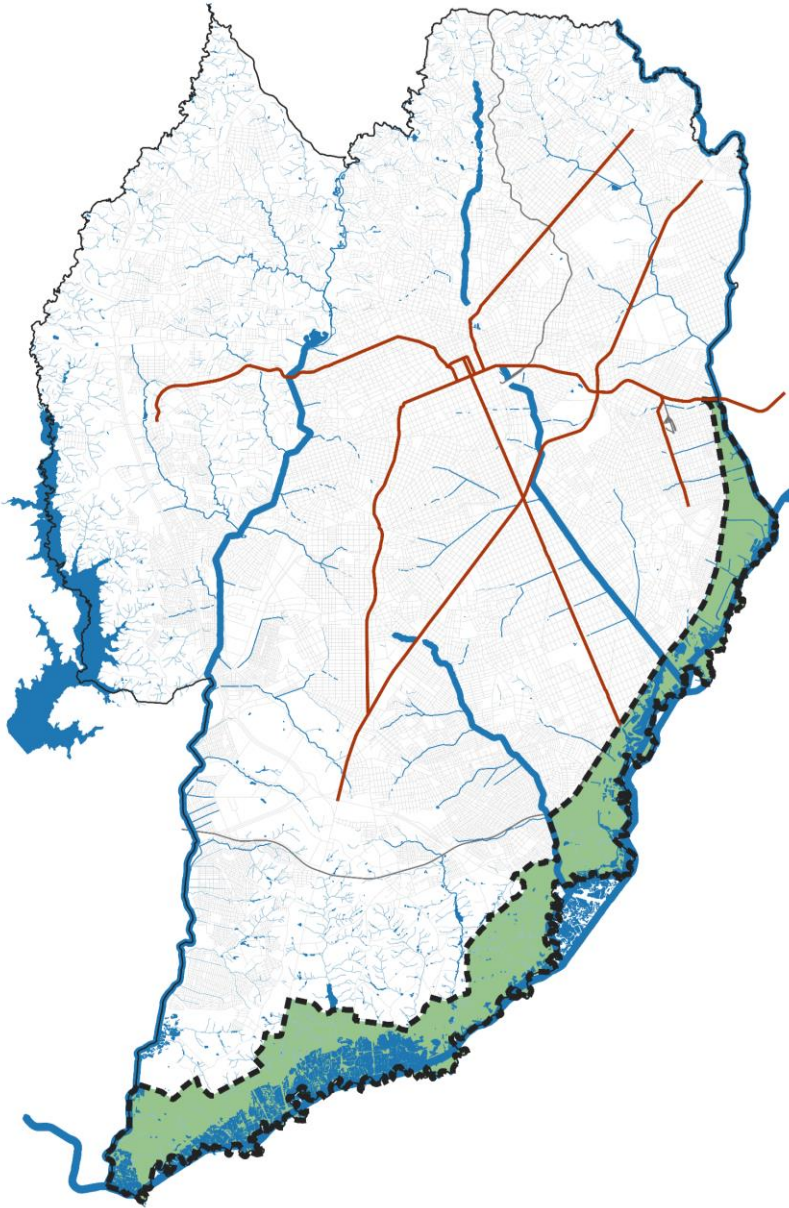
Urban Biodiversity

Urban Renewal

COMPONENTS

- Adaptation to climate change
- Green and Blue Infrastructure
- Macro and microdrainage
- Microclimate
- Filtering gardens and wetlands
- Water quality
- Urban Fauna and Flora
- Sports and recreation facilities
- Green economy
- Affordable housing - Resilient Buildings
- Active mobility





- Emergency water supply – drought periods
- Ecosystem services preservation
- Nature-based Solutions
- Urban biodiversity
- Low-density Occupation Plan
- Urban agriculture



Thank you

Nathália Oenning Ribeiro

IPPUC - Architect and Urban Planner

natribeiro@ippuc.org.br

Felipe Maia Ehmke

SMMA - Environmental Engineer

fehmke@curitiba.pr.gov.br



CURITIBA



IPPUC