



# **CITIES 4 BIODIVERSITY**

**ALINA BOKDE, CHIEF DEPUTY DIRECTOR  
LOS ANGELES COUNTY  
DEPARTMENT OF PARKS AND RECREATION**

**APRIL 7, 2022**



# OVERVIEW OF LOS ANGELES COUNTY DPR



**73,214**  
Acres of Parkland



**182**  
DPR Parks



**5**  
DPR HQ Offices

## PARKS



**9** Regional Parks



**19** Community Regional Parks



**20** Community Parks



**38** Neighborhood Parks



**20** Pocket Parks/Park Nodes



**9** Natural Areas



**1** Historic Park



**15** Wildlife Sanctuaries



**10** Nature Centers



**20** Golf Courses



**5** Senior Centers



**4** Gardens and Arboreta



**2** Performance Venues

## PARK AMENITIES



**14** Lakes  
(3 Boating And Recreation/Swimming Lakes)



**475** Sports Amenities



**36** Swimming Pools



**1** Boxing Arena



**23** Splash Pads



**13** Skate Parks



**60** Community Centers

## TRAILS AND EQUESTRIAN PROGRAM



**233** Miles of Trails



**15** Staging Areas



**4** Equestrians Centers



**6** Equestrians Parks



# Natural Areas

A Natural Area Park is a designated nature preserve and/or naturalized parkland that offers valuable access to natural spaces, scientific knowledge, and educational resources all within cherished beauty in a natural settings.

The Natural Areas Division currently oversees the operation and protection of:

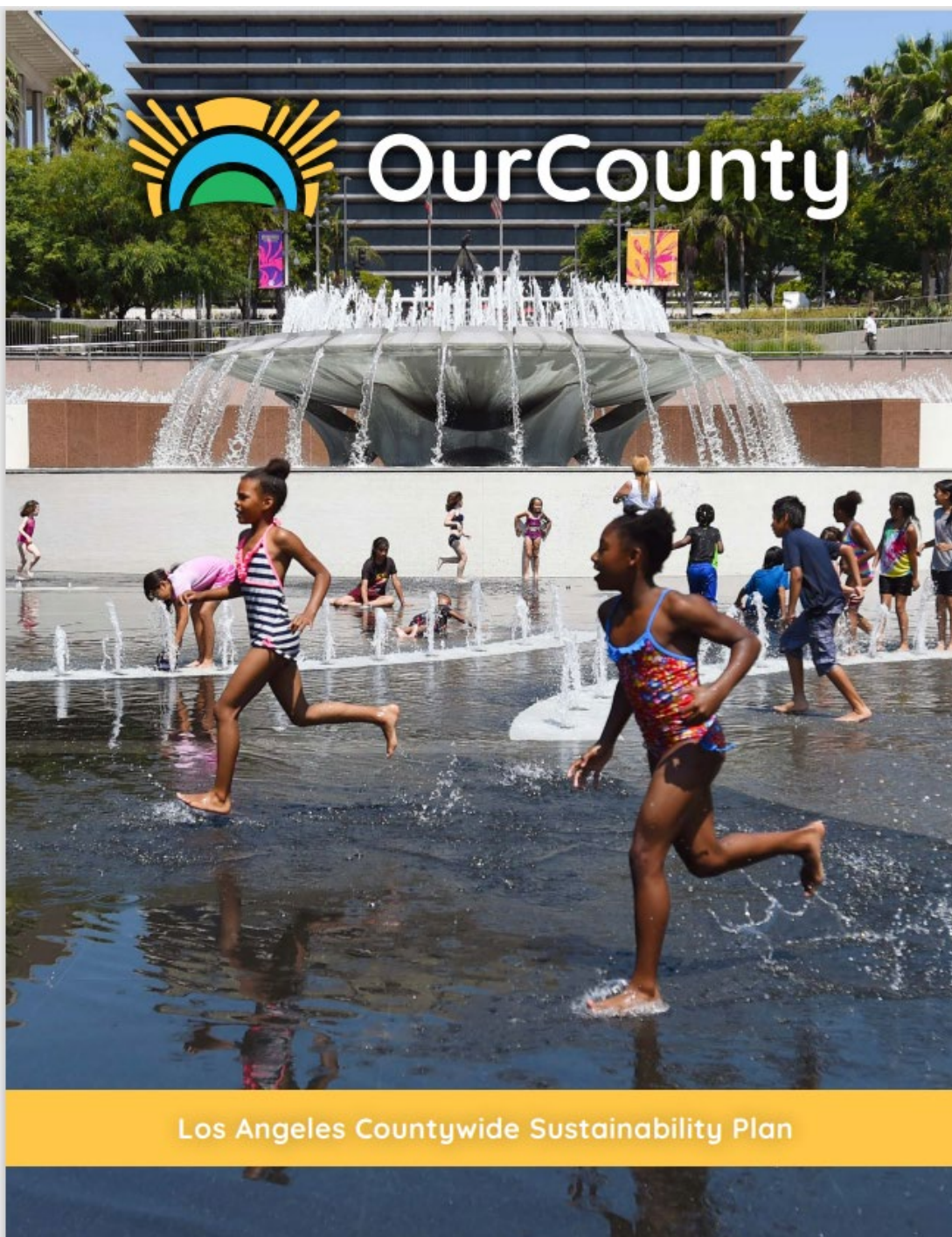
- 8 Nature Centers
- 16 Wildlife/Wildflower Sanctuaries
- Over 6,200 acres of land



*A **Natural Area** is an area of unique, scenic, historic, geologic, or ecological value with distinctive natural features that provides scientific, educational, and aesthetic value. These are maintained in a natural condition in order to retain wild nature, native ecosystems, and their processes.*





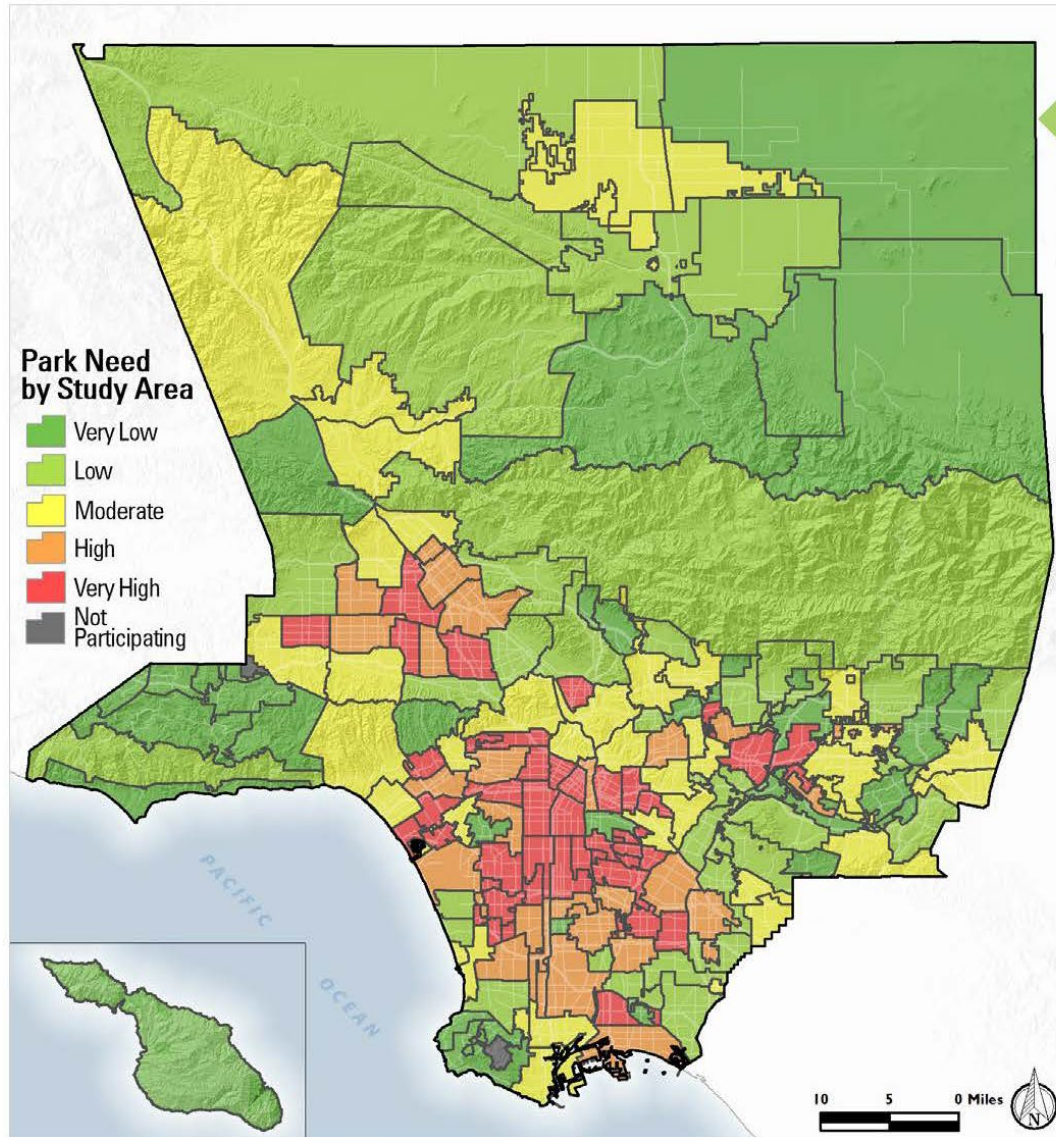


# Sustainability Planning





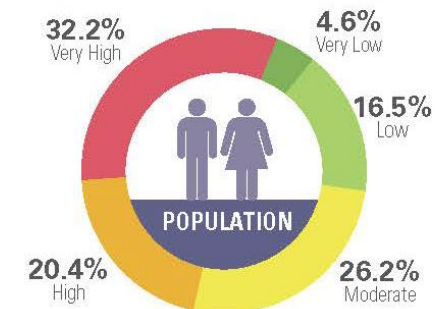
# COUNTYWIDE PARKS NEEDS ASSESSMENT



## PARK NEED

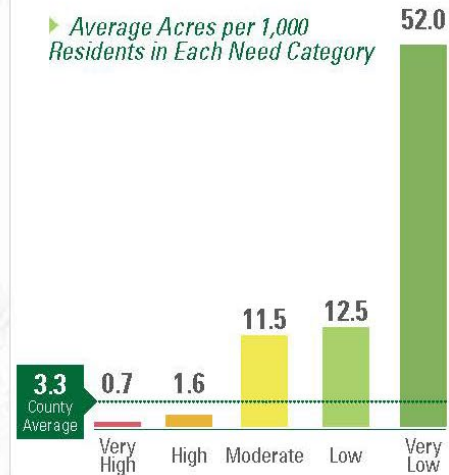
The results of the analysis of the park metrics were combined to determine an overall park need level for each Study Area. This approach creates a framework for assessing park need from a Countywide perspective.

### Population in Each Need Category\*



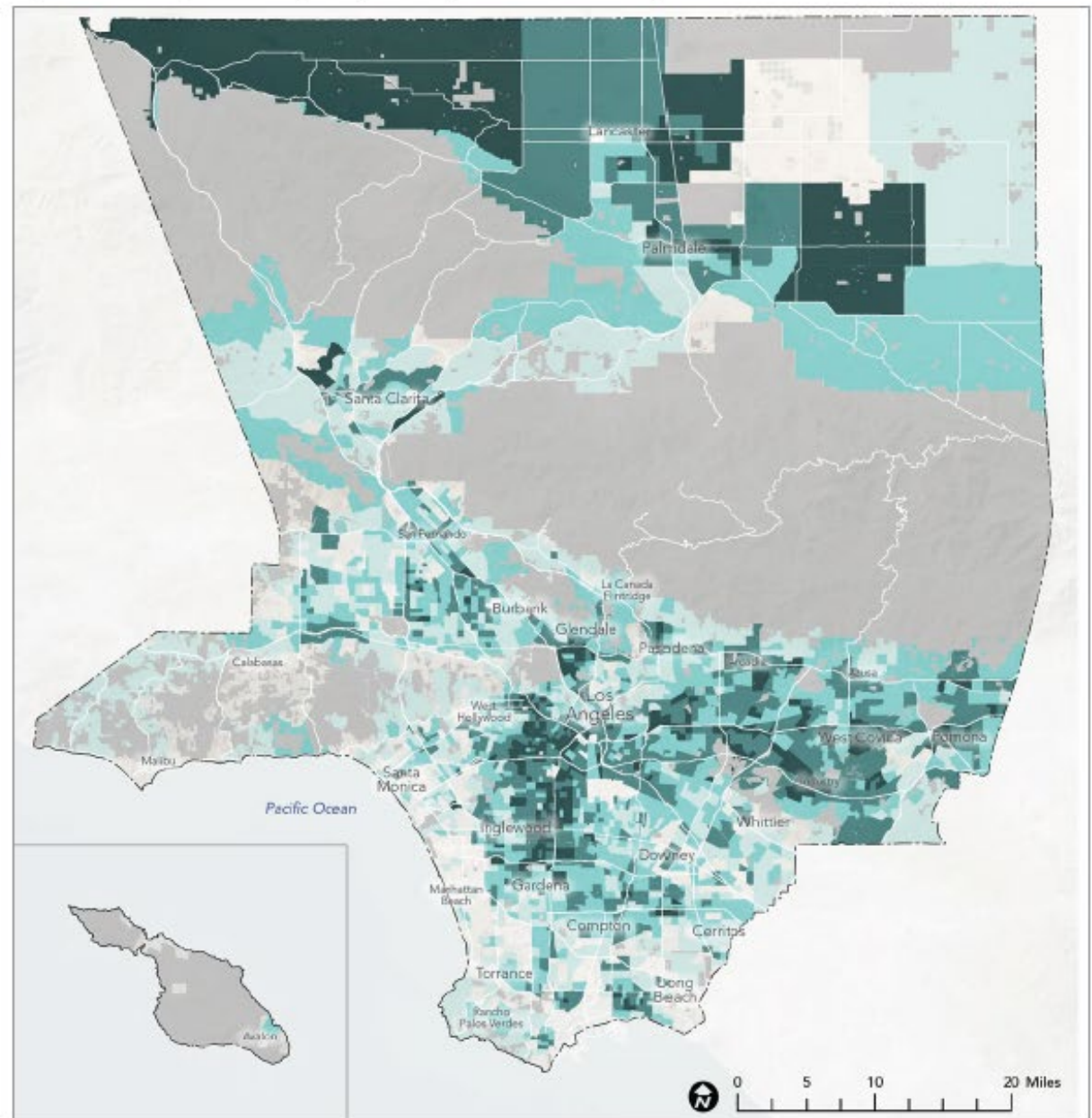
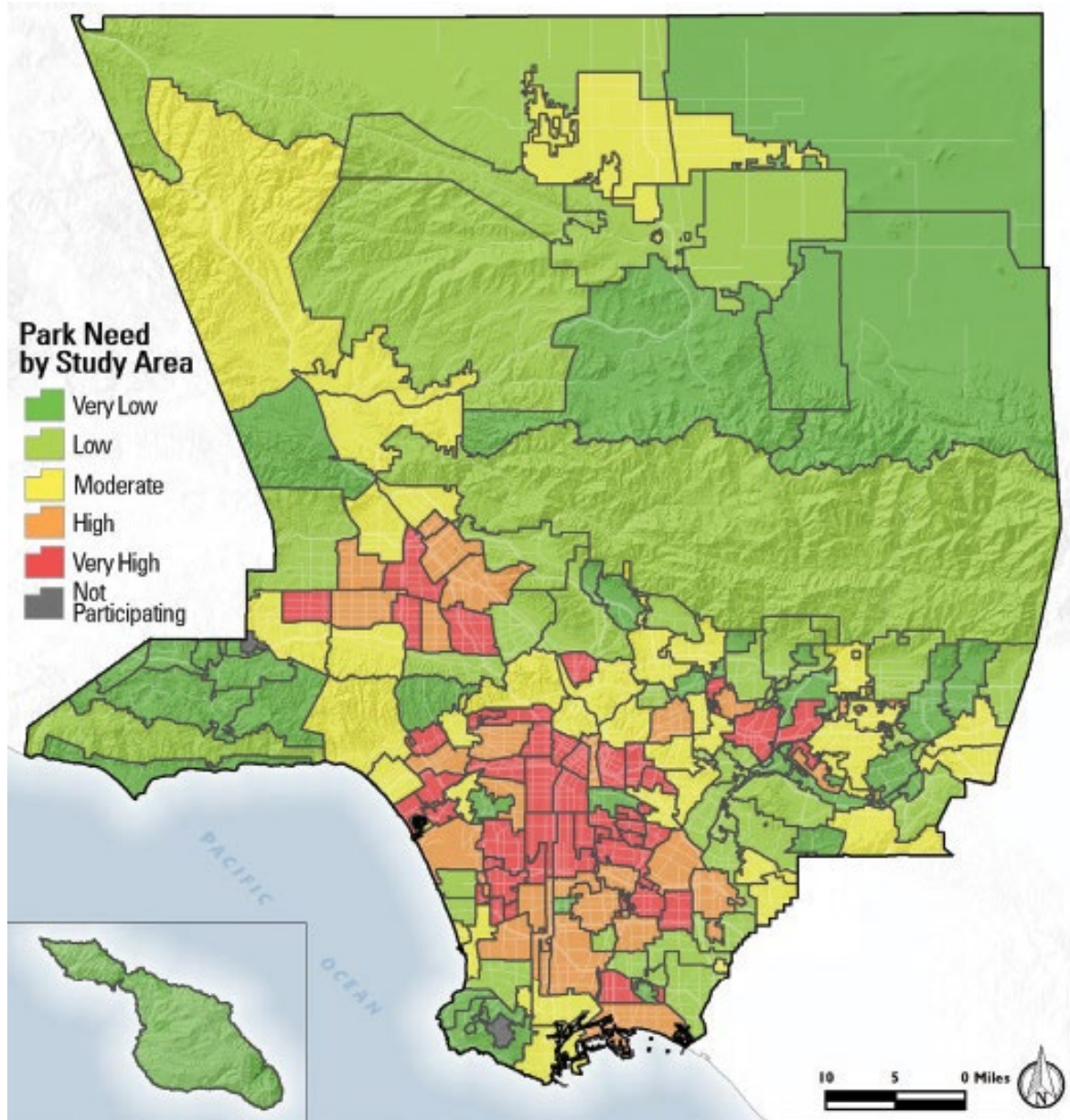
\*0.1% Not Participating

### Average Acres per 1,000 Residents in Each Need Category



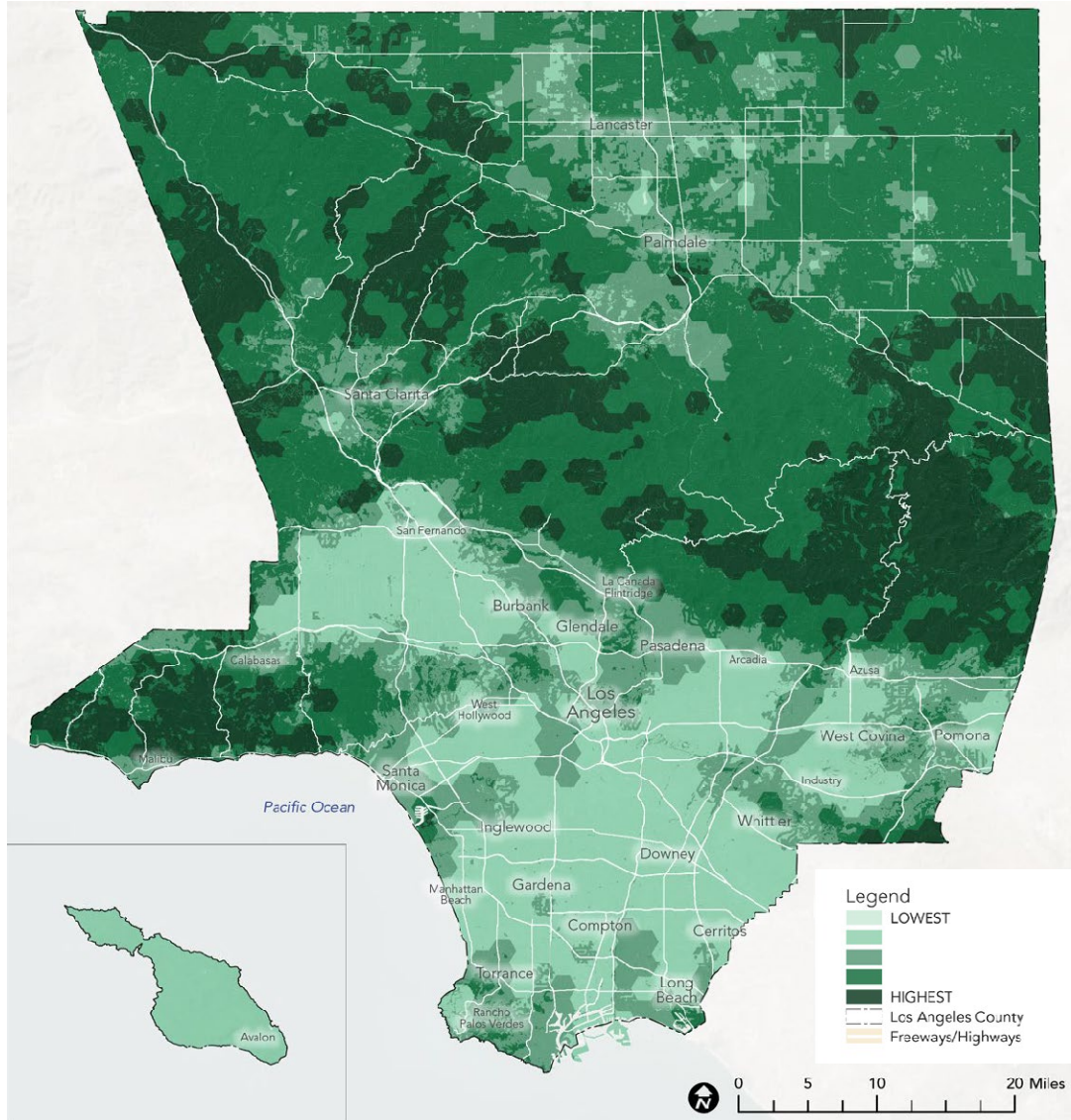


# Park Need Level and Population Vulnerability



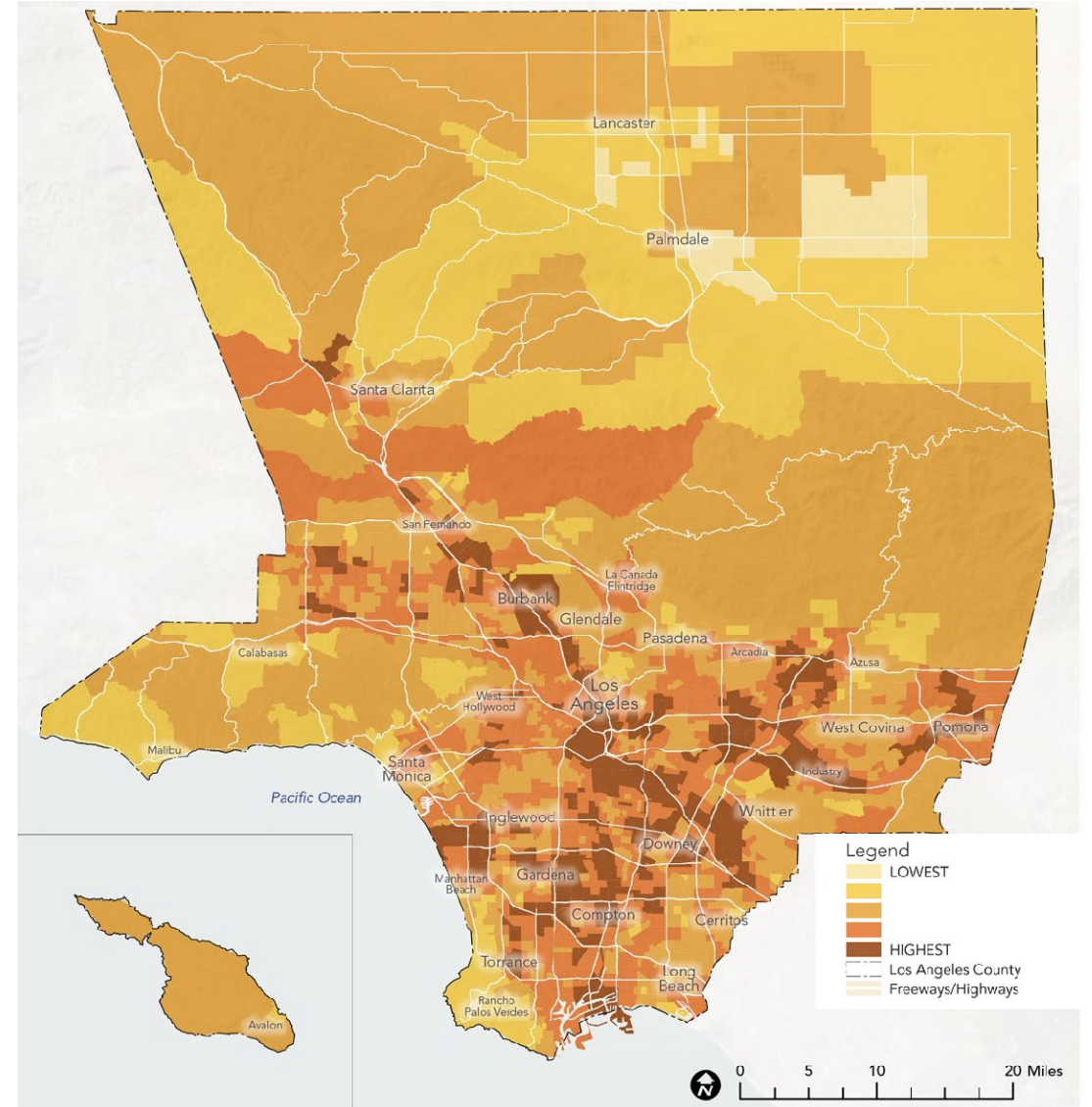


# Environmental Benefits and Burdens



**Indicators:** Species Diversity, Significant Habitat, Habitat Connectivity, Proximity to Waterbody, Habitat Type

## Environmental Benefits

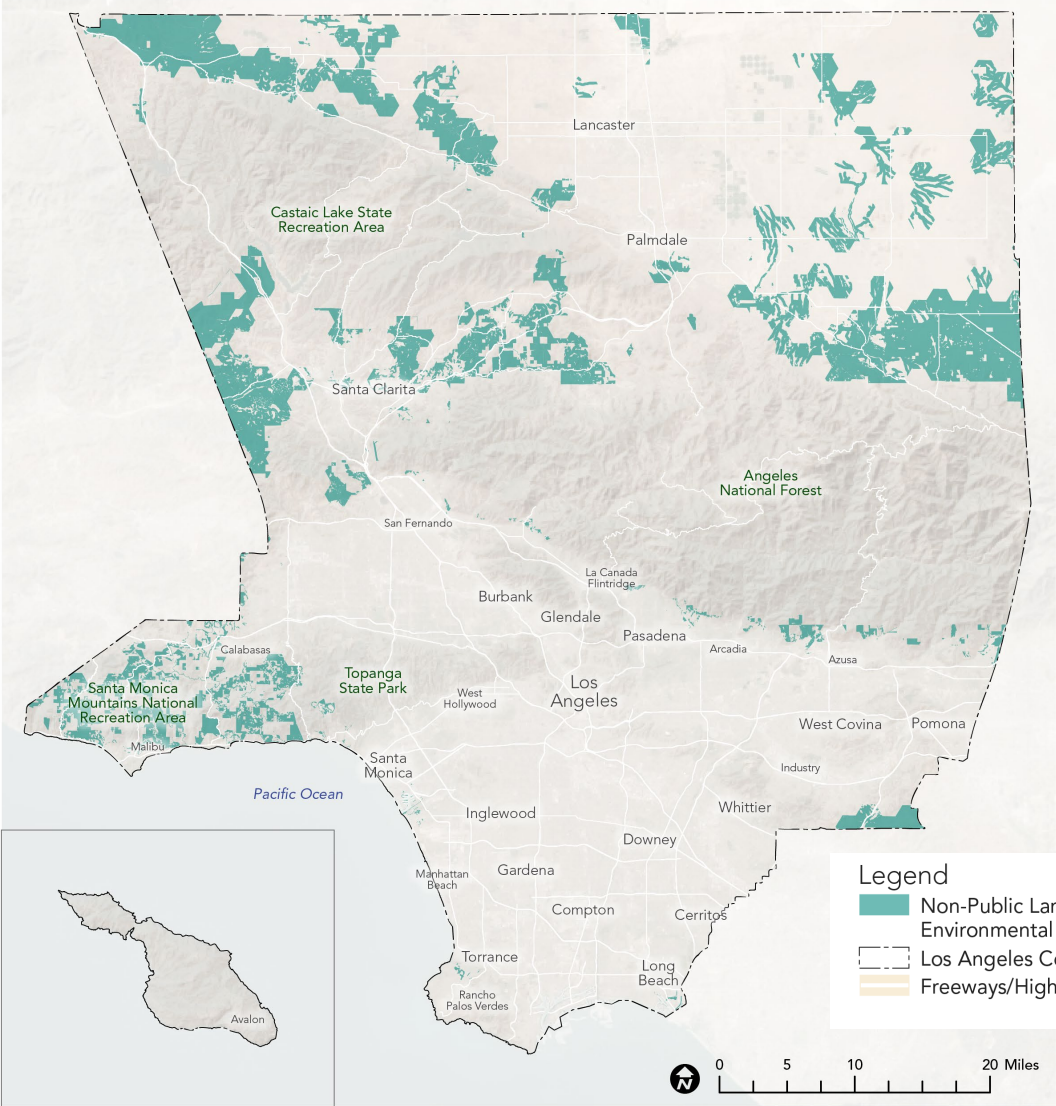


**Indicators:** Groundwater Threat, Hazardous Waste., Drinking Water Quality, Fine Particulate Matter, Pollution Burden

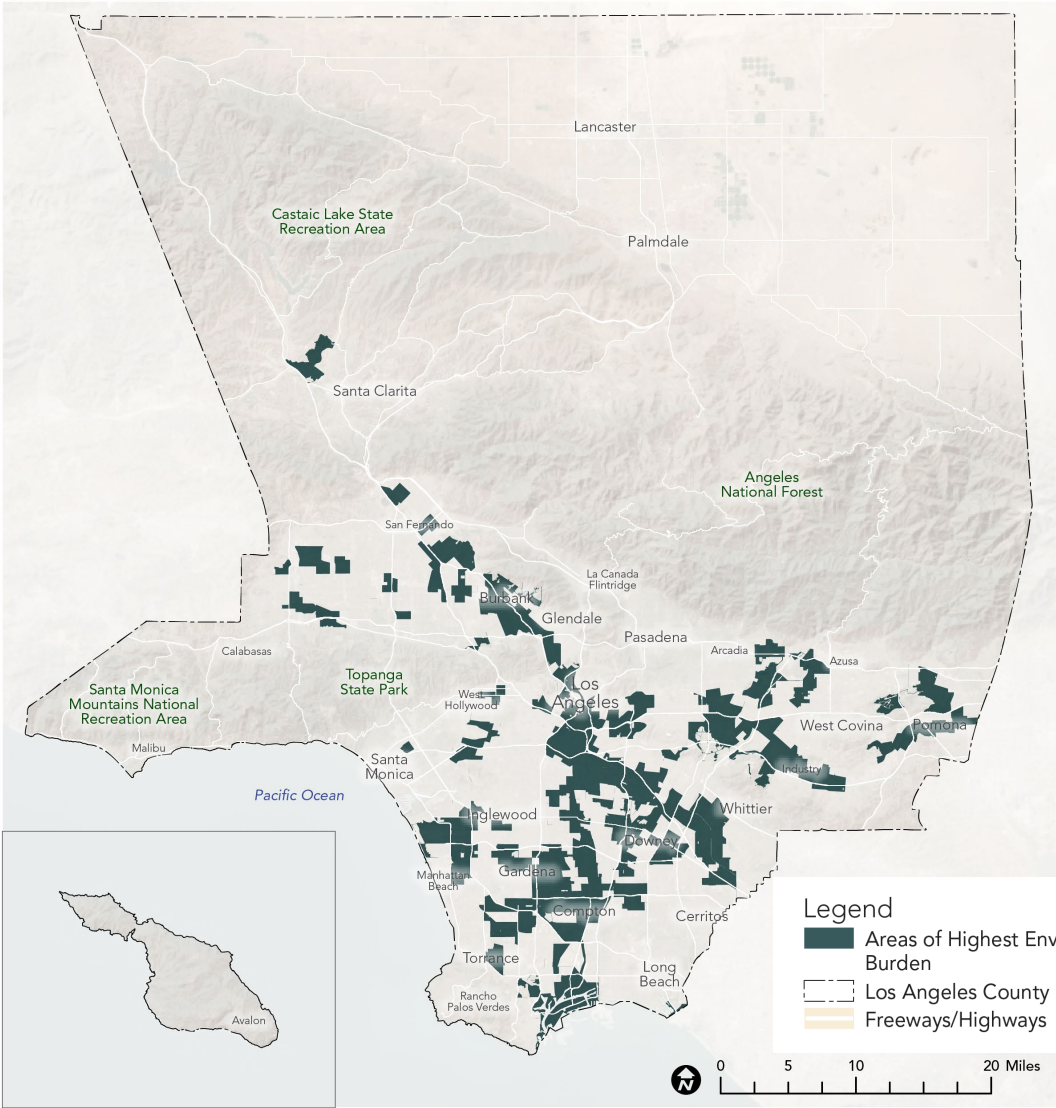
## Environmental Burdens



# Priority Areas for Environmental Measures



Priority Areas for Environmental Conservation



Priority Areas for Environmental Restoration



# Puente Hills Landfill Park





# WALNUT PARK POCKET PARK

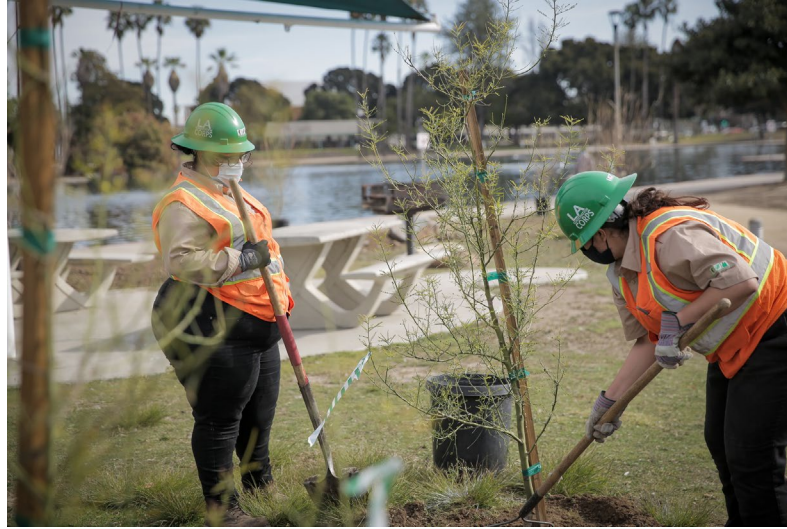




# TREE PLANTINGS

## LA COUNTY PARKS TACKLES SHADE INEQUITY

MEMBERS OF THE  
CONSERVATION  
CORPS OF LONG  
BEACH PLANT THE  
FIRST COAST  
LIVE OAK  
AT VICTORIA REGIONAL  
COMMUNITY PARK



## LA COUNTY PARKS ADVANCES SHADE EQUITY

MEMBERS OF THE  
CALIFORNIA  
CONSERVATION  
CORPS PLANT  
50 COAST LIVE  
OAK TREES

AT BELVEDERE  
COMMUNITY REGIONAL PARK





**THANK YOU!**

