



California's 30x30 Initiative and Los Angeles Area Urban Biodiversity and Nature Based Solution Efforts

Mark Gold, D.Env.

Deputy Secretary Oceans and Coastal Policy
Executive Director, Ocean Protection Council

Mark.gold@resources.ca.gov





Nature Based Solutions Executive Order (N-82-20) From Governor Newsom

Commitment to conserve 30 percent
of lands and coastal waters by 2030



Input and Engagement

- 9 regional workshops
 - 5 topical workshops
 - Online questionnaire
 - 70+ tribal consultations and conversations
 - >1000 letters
 - ~4000 individuals
 - Advisory Committee
 - Public meetings
-
- Website: californianature.ca.gov

PATHWAYS TO 30x30: Planned Release On April 22



Conservation Framework

- Key Objectives
 - Protect Biodiversity
 - Expand Access to Nature
 - Mitigate and Build Resilience to Climate Change
- Core Commitments
 - Advance Justice, Equity, Diversity and Inclusion
 - Strengthen Tribal Partnerships
 - Protect our Economic Prosperity, Clean Energy Resources, and Food Supply
 -



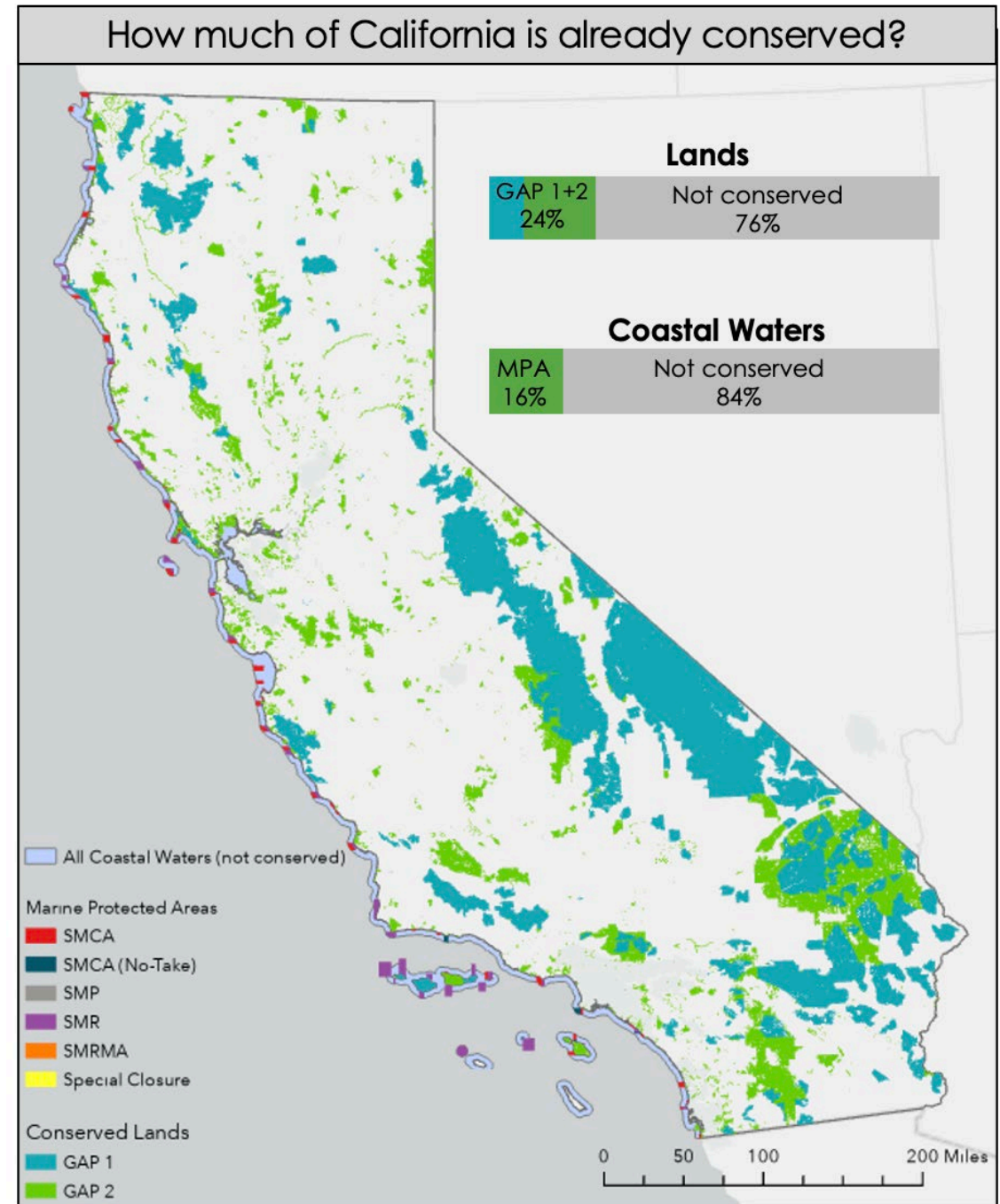
30x30 Conservation Areas

“Land and coastal water areas that are durably protected and managed to support functional ecosystems, both intact and restored, and the species that rely on them.”



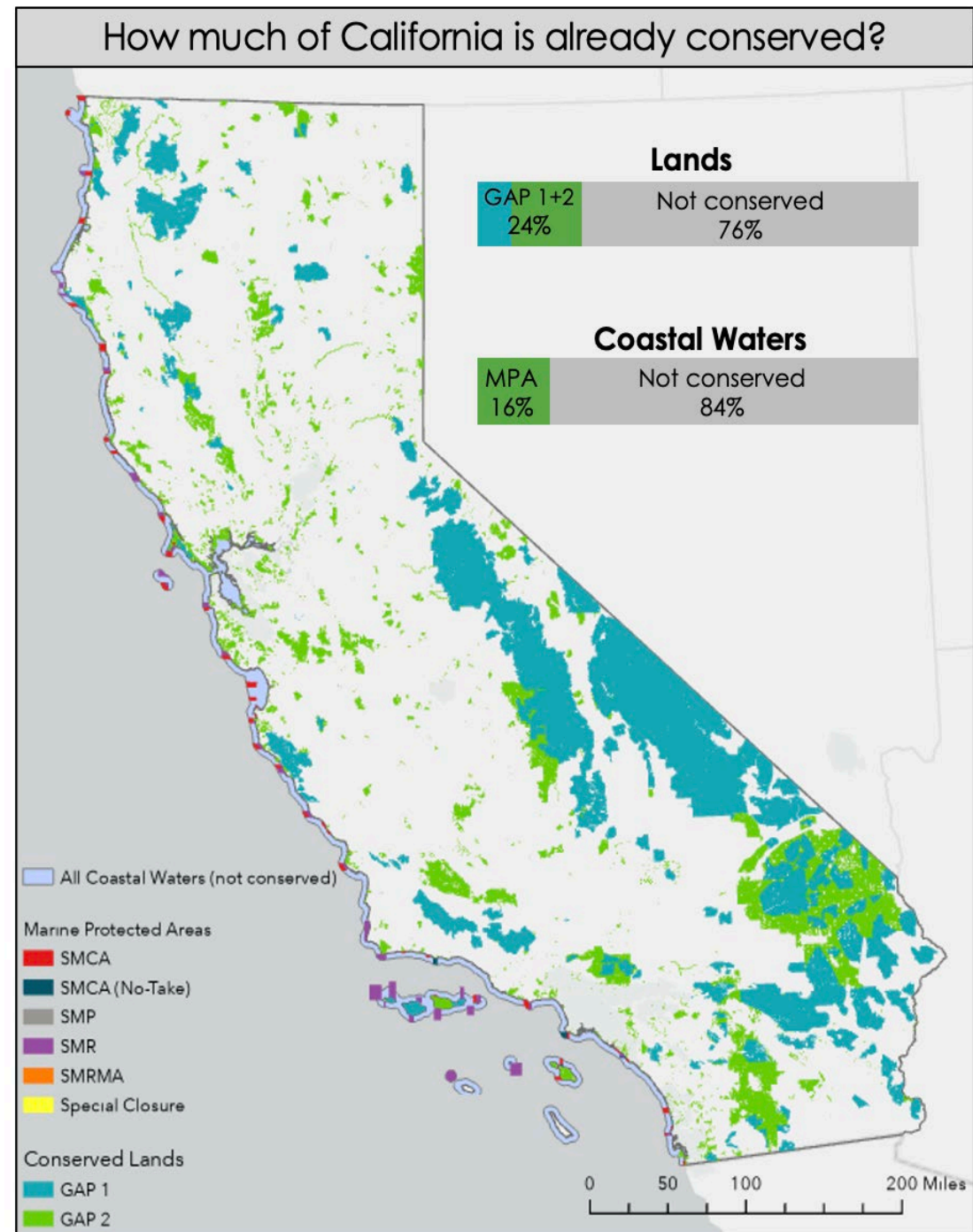
Conservation of Lands

- Broad Range of uses
 - Dedicated conservation areas
 - Recreation lands and open spaces
 - Working lands
- Importance of all conservation



Conservation of Coastal Waters

- Marine Protected Areas
 - Decadal Review in Process
- Best Opportunities in National Marine Sanctuaries



Potential Pathway to achieve 30x30 for California State Waters

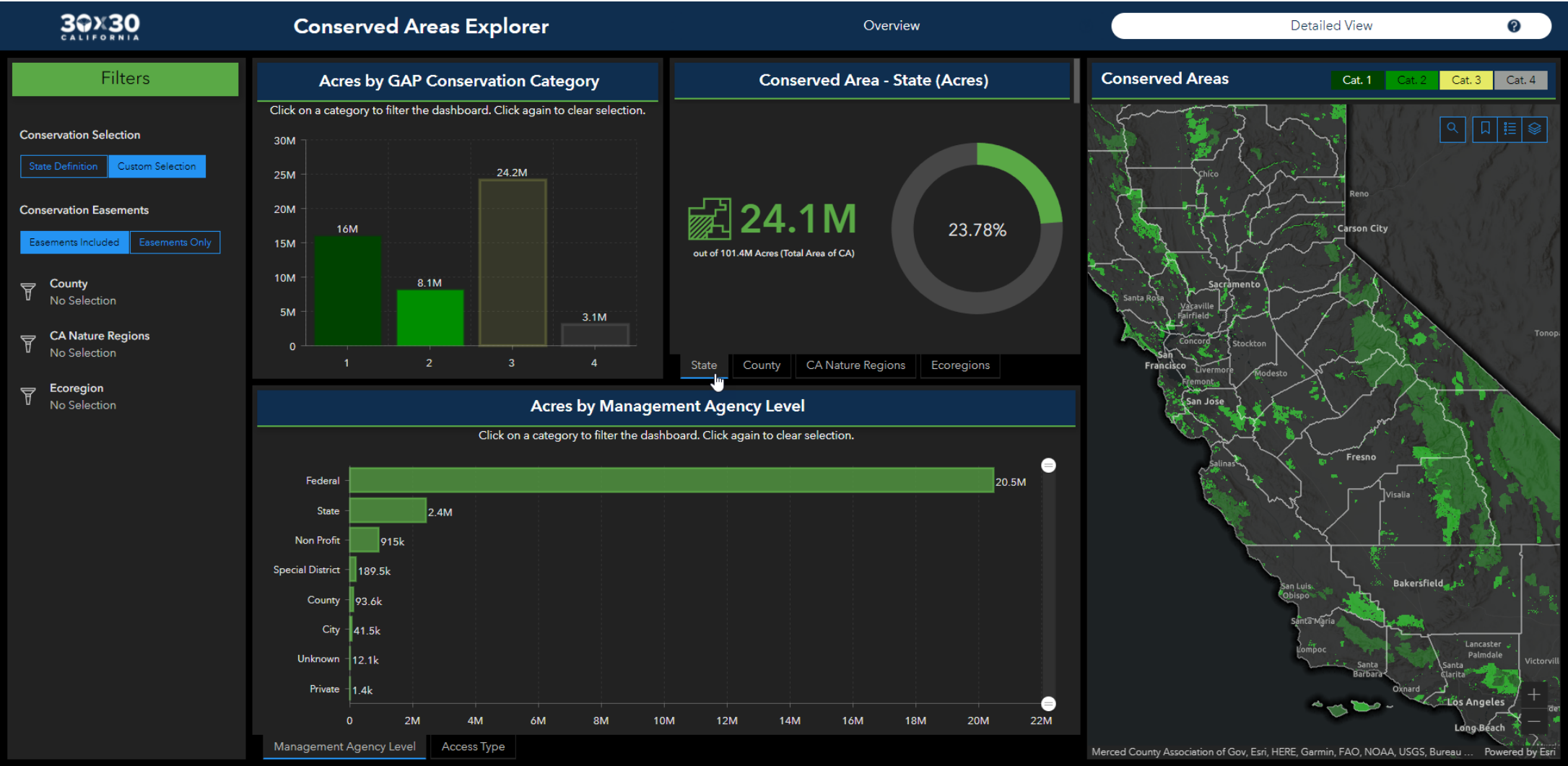
- Marine Protected Areas count as conserved – 16% of California Coastal Waters.
 - 9% are no take MPAs. 7% Limited take MPAs.
- Other potential ocean areas – California has four National Marine Sanctuaries. They make up an additional 32% of state waters. Current conservation measures include prohibition of O+G extraction and minerals mining. Additional potential measure could include:
 - Mandatory speed limits for ships
 - Fishing gear type prohibitions
 - Water quality measures like a ban on single use plastics in the NMS watershed.
 - Making temporary conservation based fisheries management measures permanent

30x30 Partnership

- Regional coalitions
- Tribal Partners
- California Biodiversity Council
 - Interagency Coordination
- California Biodiversity Network
 - Academics/Practitioners
- CNRA departments and conservancies



CA NATURE GIS



Pathways to 30x30

- Accelerate **Regionally Led** Conservation
- Execute Strategic Land **Acquisitions**
- Increase Voluntary Conservation **Easements**
- **Enhance Conservation** of Existing Public Lands and Coastal Waters
- Institutionalize **Advance Mitigation**
- Expand and Accelerate Environmental **Restoration**
- Strengthen **Coordination** Among Governments and Key Partners
- **Align Investments** to Maximize Conservation Benefits
- **Evaluate** Conservation Outcomes and **Adaptively Manage**

ADVANCING STRATEGIC ACTIONS

- Initial Investments
 - Nature-Based Solutions Set Aside -- \$768 Million
 - Coastal Resilience -- \$500 Million
 - Habitat Restoration -- \$645 Million
 - Wildlife Corridors -- \$105 Million



State Water Bond Measures

General obligation bonds (State pays them back through general fund).

- Propositions 13, 40, 50, 84, 1 and 68
- Prop 13 – 2000 - 65% approval - \$2 Billion
- Prop 40 – March 2002 – 57% approval - \$2.6 Billion
- Prop 50 – November 2002 – 55% approval - \$3.4 Billion
- Prop 84 – 2006 – 54% approval - \$5.4 Billion
- Prop 1 – 67% approval - \$7.5 Billion
- Prop 68 – June, 2018 proposition – \$1.6B for water.
- **Can only pay for capital costs. Not for Operations and maintenance or programs.**
- **2021-2023 – Climate Resilience Funds – General Fund Billions \$ more – pay as you go.**

Proposition O – Stormwater Pollution Abatement Bond Measure

- \$500 million bond measure for Los Angeles
- Passed with over 76% of the vote in 2004
- Primary focus – To enable L.A. to comply with the County stormwater permit and local TMDLs by reducing runoff pollution
- Secondary – multi-use benefits including water supply, flood control, recreation and habitat
- Bond measures only pay for capital costs

Green Streets and LID



Site Design/LID Concepts

Some Common LID Best Management Practices ⁵



Vegetated Swales / Bioswales



Rain Gardens



Rain Cisterns



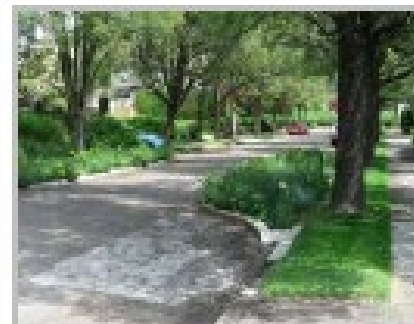
Green Roofs



Permeable Pavers



Porous Pavement



Curb Bump-Outs



Curb Cuts

Wet Ponds and Treatment Wetlands



Proposition O – Machado Lake - Nature Based Solution project



Machado Lake Ecosystem Rehabilitation



Vegetative Swale



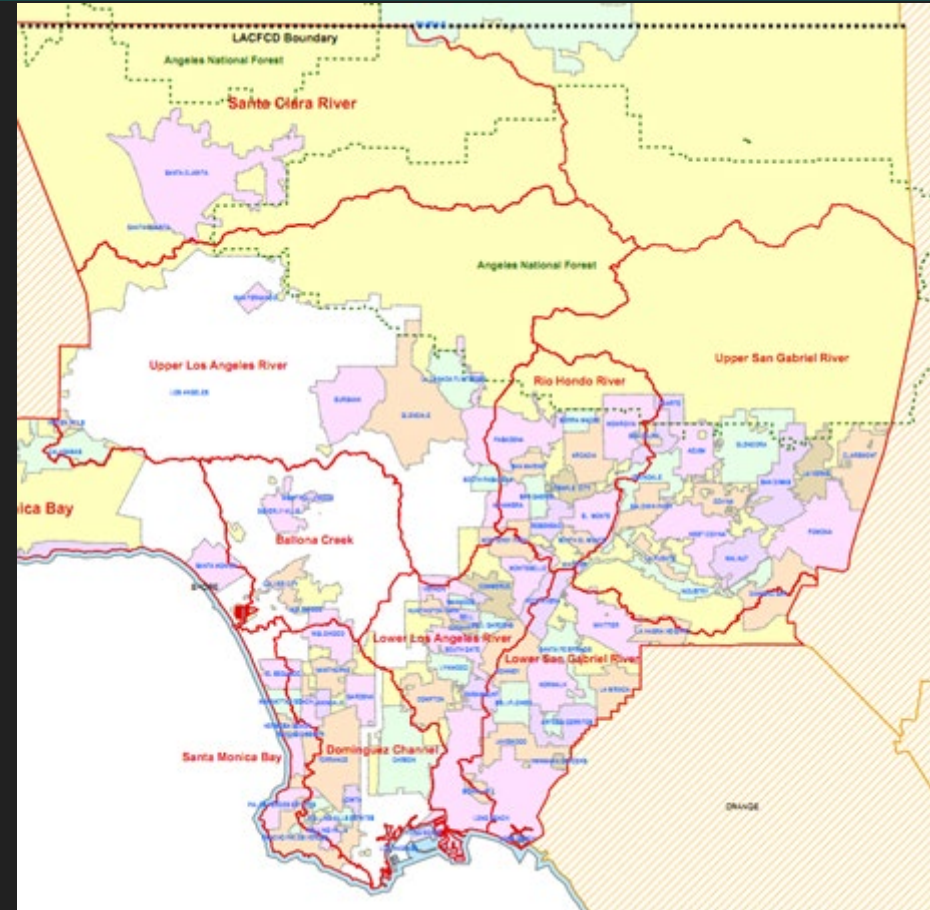
Aeration System

Turf Replacement – \$500 Million+ in Southern California



Measure W – Parcel Tax to Reduce Stormwater Pollution and Augment Local Water Supplies

- Countywide measure - \$83/household annually. \$300 M/yr
- 9 watershed jurisdictions
- Approximately 40% for the cities, 50% for watershed groups. 10% for monitoring and administration.
- 2018 – LA County Measure W. Board of Supervisors voted 5-0 to pursue funding. Resiliency approach. **Passed with 69.5% of the vote!!!** Not just stormwater for water quality, but IWM. Safe, Clean Water Program. \$300M a year in perpetuity. Parcel tax.
- Nature Based Solutions approach



City of Los Angeles: Green New Deal pLAn 2019

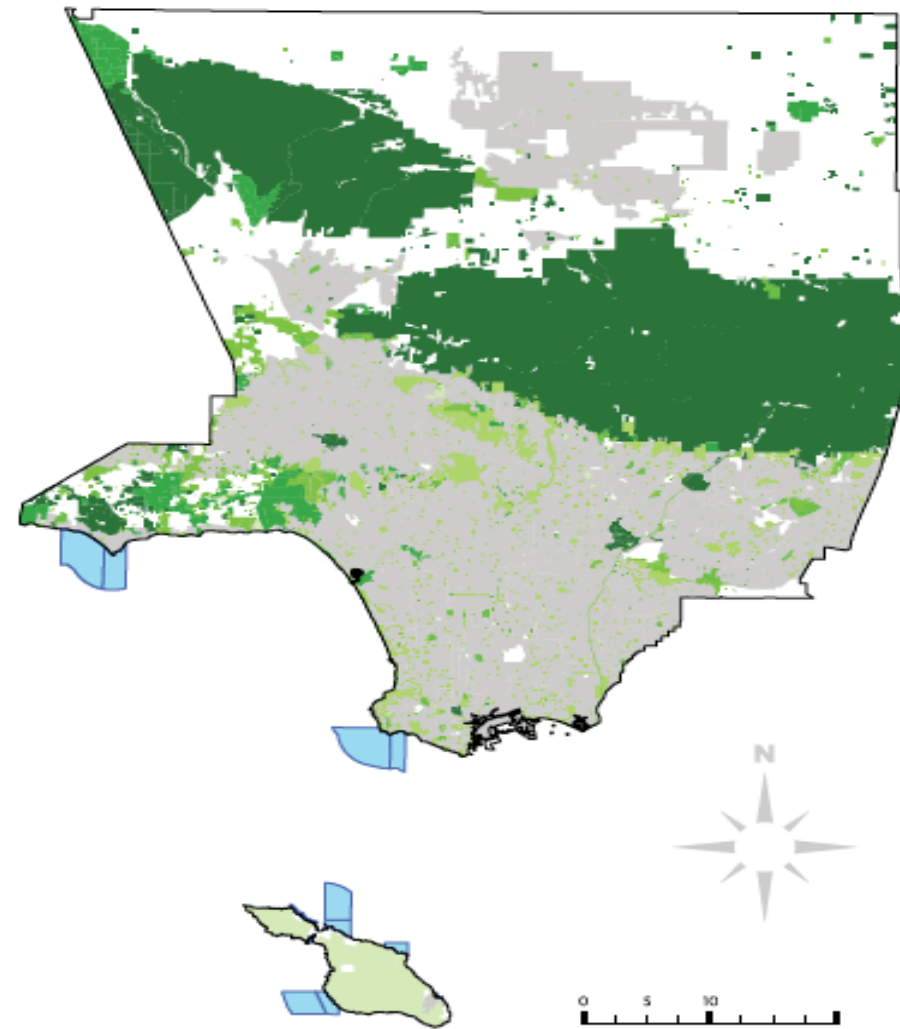
- Chapter on Urban Ecosystems and Resilience
 - Increase tree canopy in areas of greatest need by at least 50% by 2028
 - Reduce urban/rural temperature differential by at least 1.7 degrees by 2025; and 3 degrees by 2035. Cool roofs, cool pavements, tree canopy.
 - LA River Ecosystem Restoration Plan initiation.
 - Ensure proportion of Angelenos living within 1/2 mile of a park or open space is at least 65% by 2025; 75% by 2035; and 100% by 2050
 - Achieve and maintain 'no-net loss' of native biodiversity by 2035
 - By 2025 - Develop a citywide strategy for protection and enhancement of native biodiversity
 - Preserve and expand connectivity and access to natural habitats
 - Collect data and map urban biodiversity to identify key areas to enhance or protect ·
 - Protect and restore sensitive habitats ·
 - Increase the number of native and pollinator-friendly gardens and natural areas in public spaces

Our County: Regional Sustainability Plan 2019

- Goal 5 – Thriving ecosystems, habitat and diversity
- Strategy 5a - Increase ecosystem function, habitat quality, and connectivity, and prevent the loss of native biodiversity in the region
 - Targets include – No net loss of biodiversity. Protect 100% of wildlife corridors by 2035.
- Strategy 5b -Preserve and enhance open space, waterways, and priority ecological areas
 - Targets – Protect 55% of natural areas by 2025, 65% by 2035 and 70% by 2045.



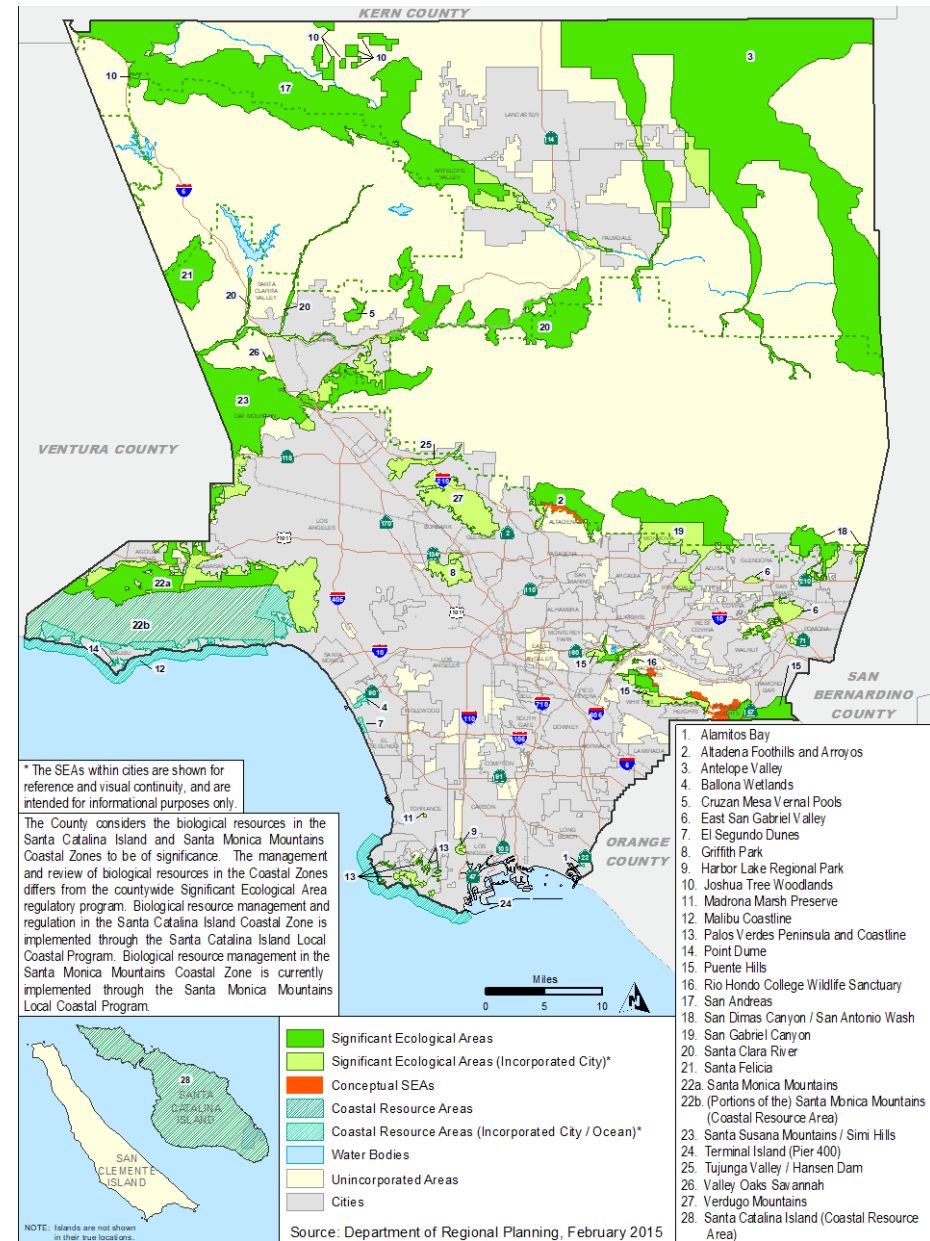
L.A. County Protected and Urban Areas



Key

- | | |
|-------------------------|----------------------------------|
| LA County Boundary | County Protected Areas |
| Marine Protected Areas | Special District Protected Areas |
| Federal Protected Areas | City Protected Areas |
| State Protected Areas | Non Profit Protected Areas |
| | Urban Areas |

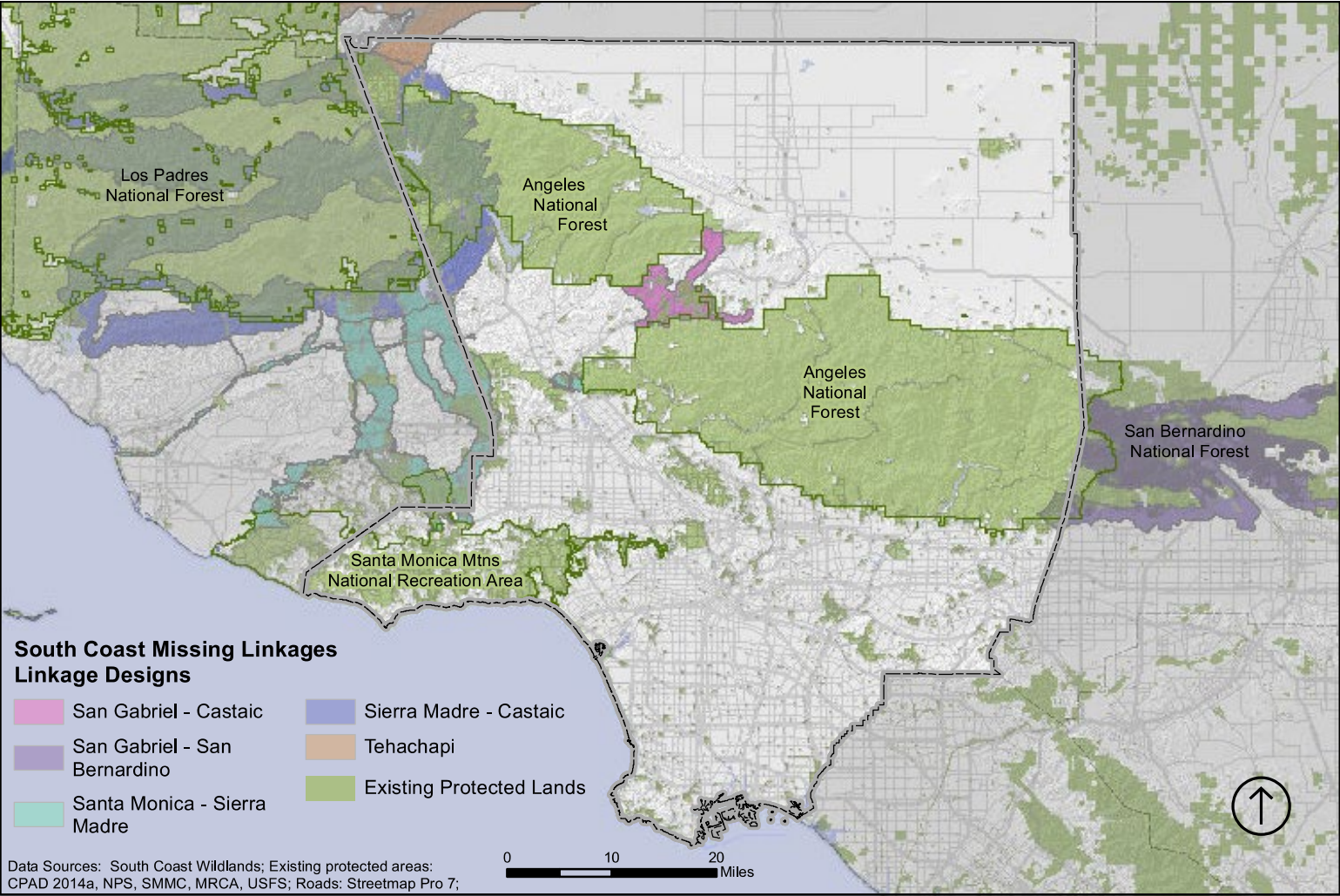
Significant Ecological Areas



Missing Linkages

	Acres	%
Total linkage area in LA County	136,697	
Total linkage area protected in LA County	78,943	58%
Protected Status by Linkage Area		
	Acres	%
San Gabriel - Castaic linkage area protected in LA County	5,126	21%
San Gabriel - San Bernardino linkage area protected in LA County	3,303	79%
Santa Monica - Sierra Madre linkage area protected in LA County	5,012	39%
Sierra Madre - Castaic linkage area protected in LA County*	65,524	73%
Tehachapi linkage area protected in LA County	48	1%

* Sierra Madre - Castaic linkage overlaps 3 others so combined acreage of all linkages is greater than total linkage area





UCLA Grand Challenges

Sustainable LA

How we can achieve a sustainable future?

Assess Biodiversity and Ecosystem Health

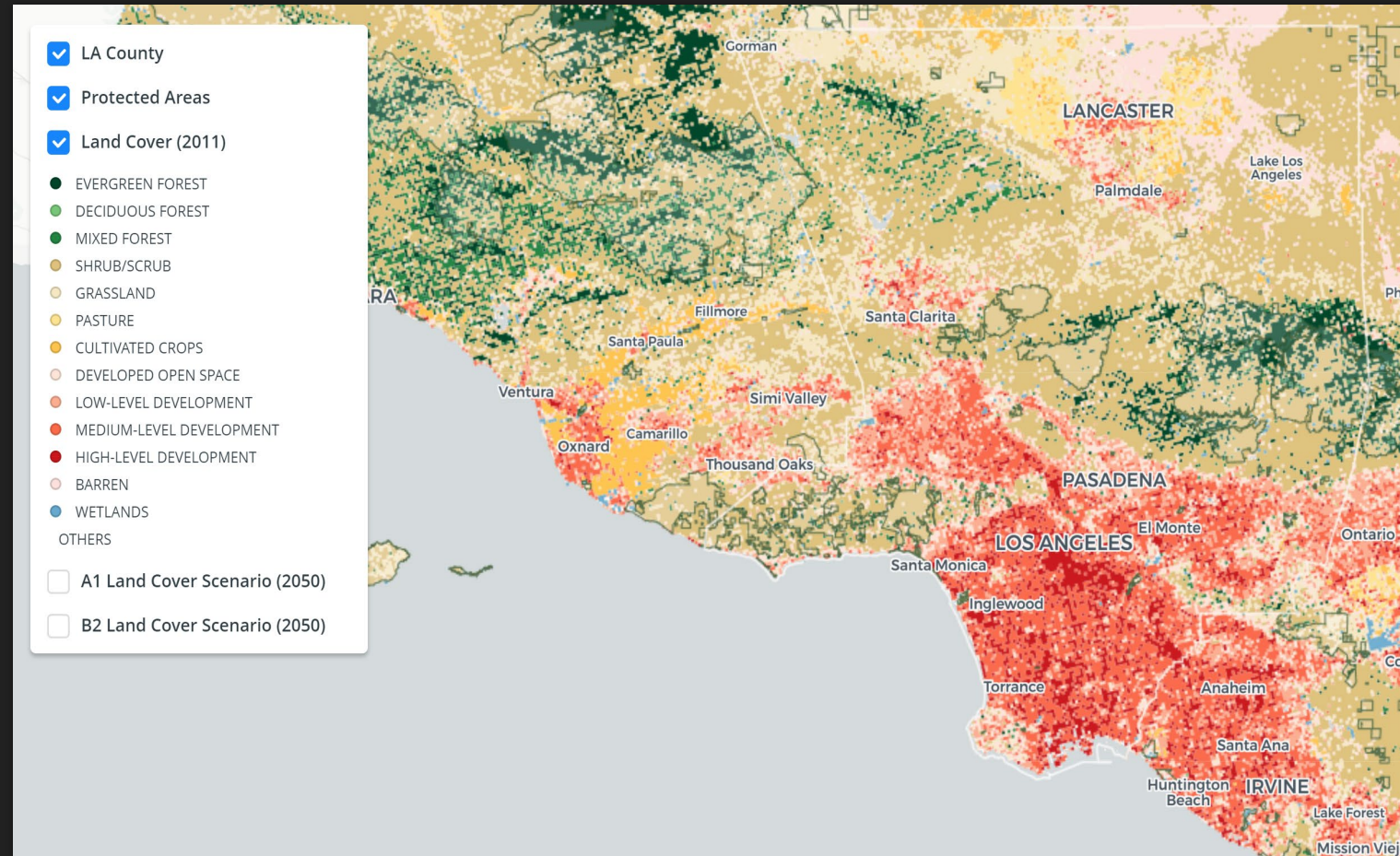
Enhance Ecosystem Health and Resiliency

Integrate Ecosystem Health and Human Health and Wellbeing



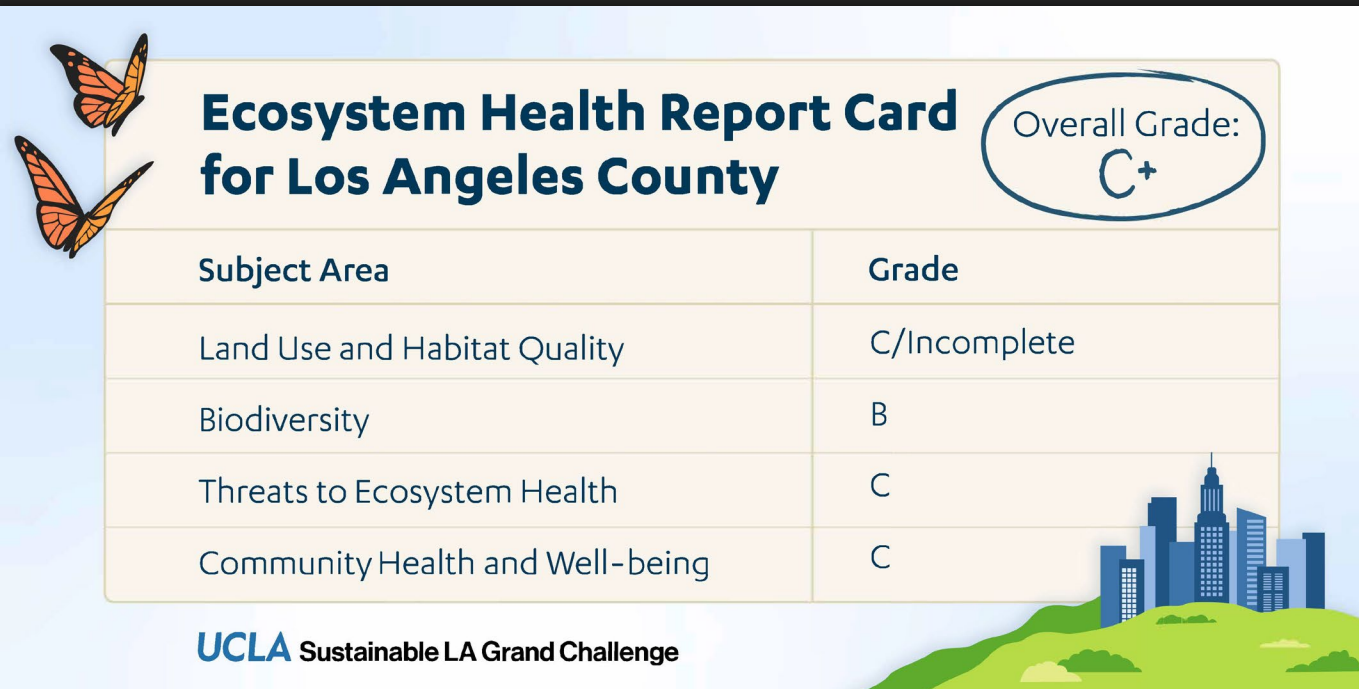
Biodiversity Atlas of Los Angeles

- The Biodiversity Atlas of Los Angeles is a collection of interactive, public maps that illustrate the great ecological diversity of Los Angeles County.
- The atlas contributes to regional conservation efforts by providing valuable environmental and species data to resource managers and policy-makers.



UCLA Los Angeles County Ecosystem Report Card 2021

<https://escholarship.org/uc/item/117326k1>



Report Card is a comprehensive assessment of LA County's protected natural areas, biodiversity and species of concerns. The Report Card includes information on terrestrial and marine biodiversity and utilizes numerous indicators to determine grades for ecosystem health. Also, the document ties to UN Sustainable Development Goals and Our County targets



Photo: Lincoln Chu



**OCEAN
PROTECTION
COUNCIL**

Thank You

Contact: Mark.Gold@resources.ca.gov