



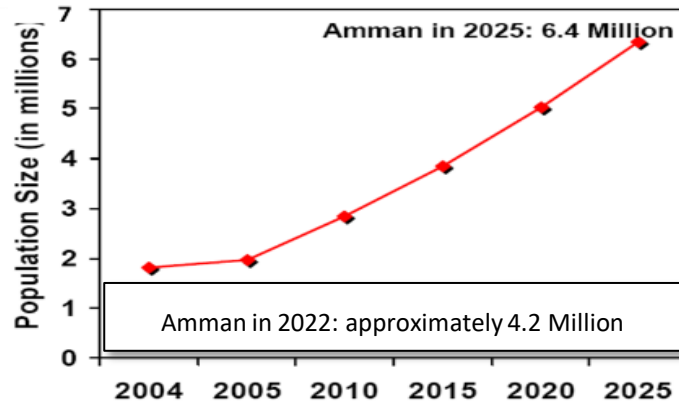
Greater
Amman
Municipality

Amman

A Sustainable, Resilient, and Green City

Amman

More than 4.2 Million inhabitants coming from different social and cultural backgrounds (42% of Jordan population)

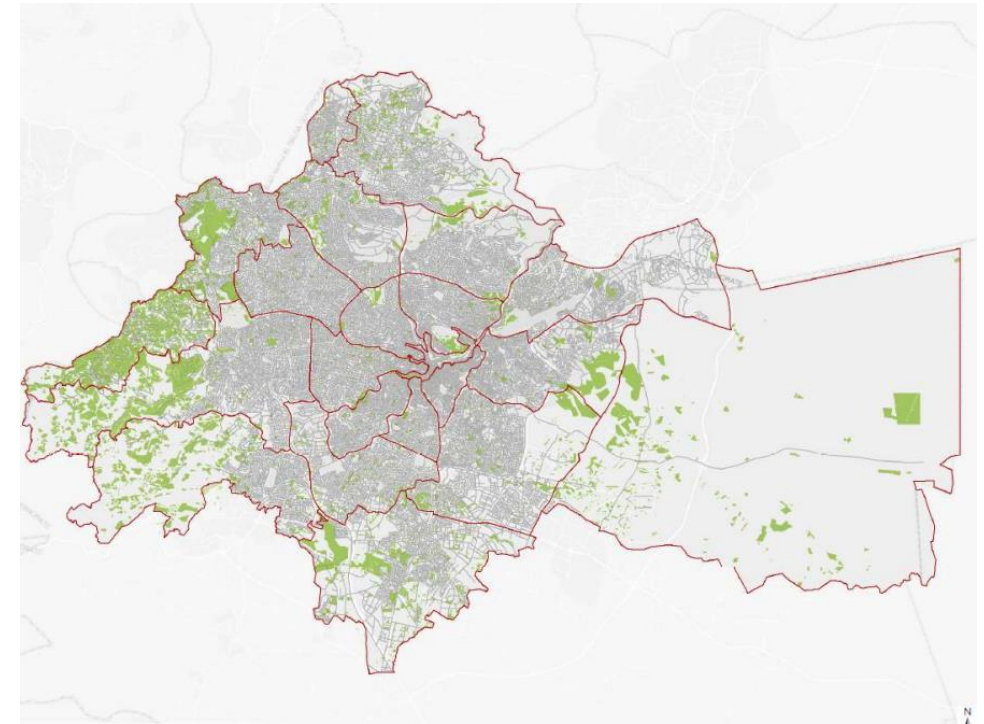
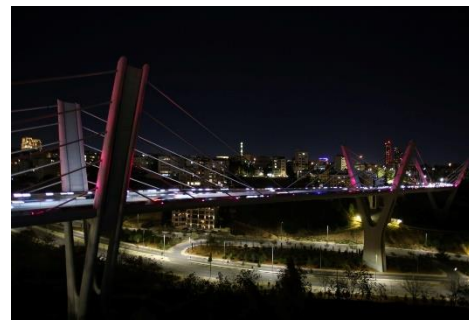
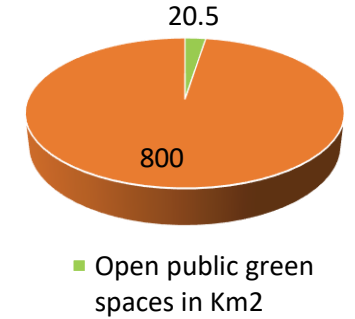


Amman holds outsized share of Jordan's GDP (>60%) country; with 80 % of its capital enterprise.

approximately 800 square kilometers

80% of Amman's growth between 1999 and 2022 was through sprawl.

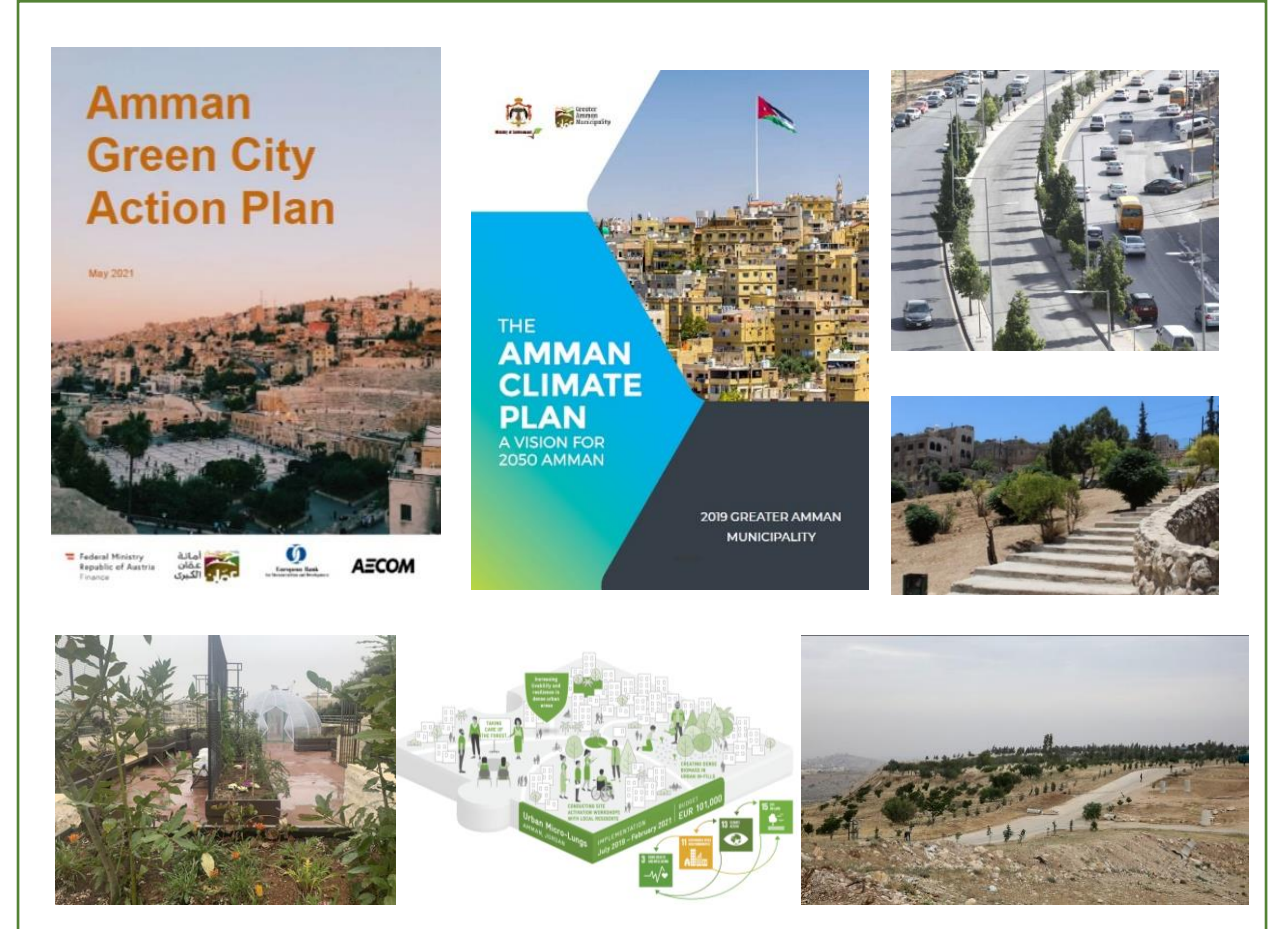
The percentage of open public green spaces to the area of Amman is targeted to be 2.5% in 2026



Long-term / National and City-level Planning



Medium-Short term Strategies, policies and Projects



Urban Biodiversity Context

Key challenges

Rapid urbanization



- High Population
- urban sprawl due to horizontal expansion
- loss of limited agricultural land
- High cost of service delivery

Limited natural resources



- Heavily rely on imported energy
- One of the highest water-deprived countries

Climate change



- Extreme weather events
- Heavy rains lead to flooding
- Drought and heat waves

← Technical and financial capacity constraints affect long term science-based planning and data management →



Opportunities

