

C4B Cities Introduction

Order:

1. **Brazil** (BRZ)
2. **China** (CHN)
3. **Colombia** (COL)
4. **France** (FRA)
5. **Indonesia** (IND)
6. **Jordan** (JRD)
7. **Nigeria** (NIG)
8. **Paraguay** (PRG)
9. **Peru** (PER)
10. **Rwanda** (RWD)
11. **Sierra Leone** (SLO)
12. **Spain** (SPA)
13. **Turkey** (TRK)
14. **Scotland, United Kingdom** (UKD)
15. **Any Others?**

São Paulo (Brazil)

POPULATION (2021)

Brazil 213,317,639 people

São Paulo 12,396,372 people

*Source IBGE <https://cidades.ibge.gov.br/brasil/sp/sao-paulo/panorama>

ONE SIGNIFICANT CHALLENGE CONCERNING ECOLOGICAL PLANNING

- Reconciling environmental protection with sustainable economic development to improve quality of life of the population

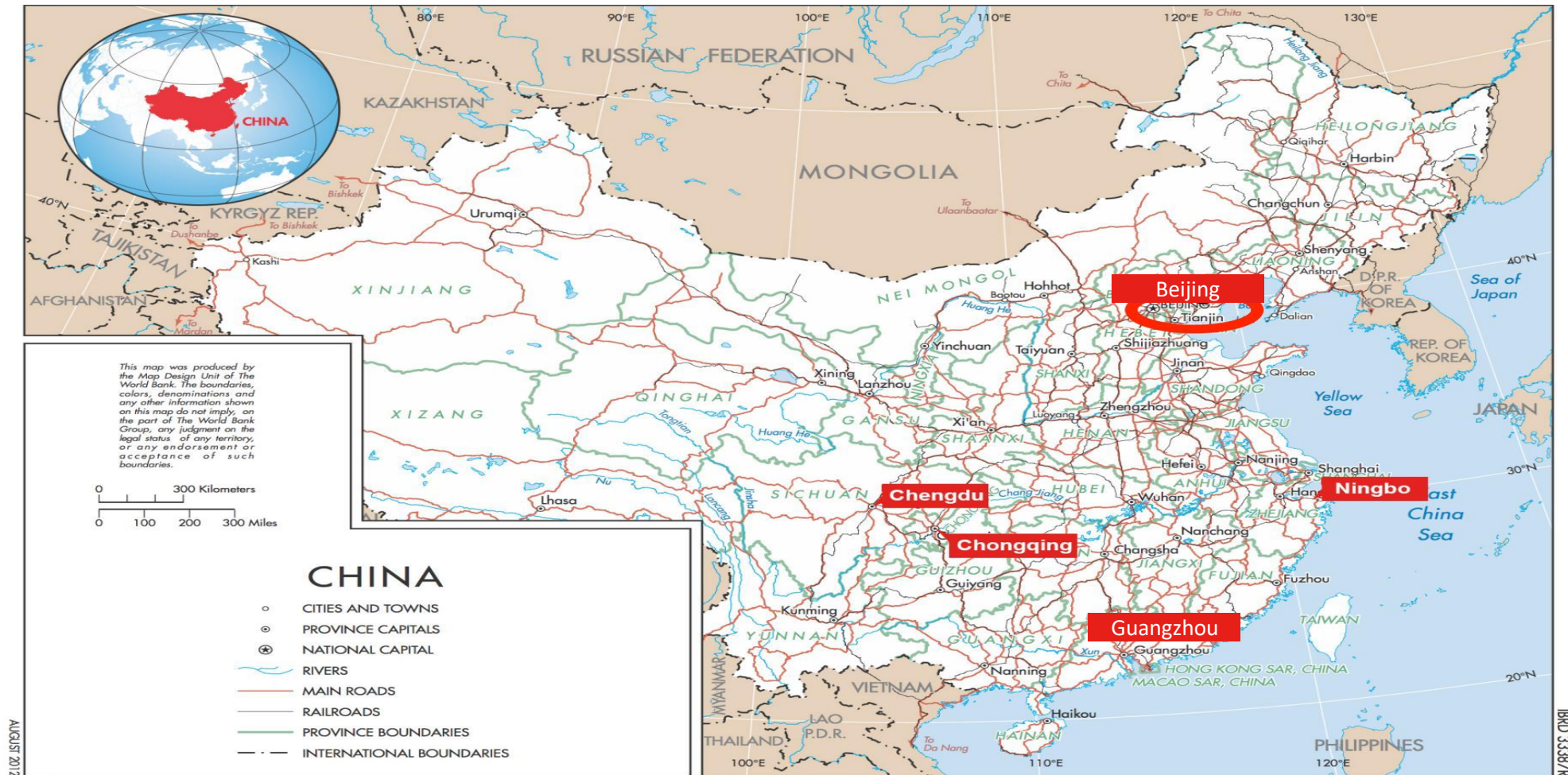
FUN FACT

With 506 species, the city of São Paulo is home to more types of birds than all of Chile or Portugal.

*Source Inventário da Fauna Silvestre do Município de São Paulo-2018



Location of Participant Cities and organization



Guangzhou (China)

POPULATION

18,676,600 people

ONE SIGNIFICANT CHALLENGE CONCERNING ECOLOGICAL PLANNING

To achieve climate resilience and low-carbon development in the progress of **urban regeneration**.

FUN FACT

It is a “**flower city**” on the Tropic of Cancer.



ChengDu (China)



POPULATION

21,992,000 people

ONE SIGNIFICANT CHALLENGE CONCERNING ECOLOGICAL PLANNING

Facing the pressures of urban development ,economic growth ,carbon reduction and ecological protection.

FUN FACT

- It is the homeland of **the giant panda**.
- It is a rare mega city that can see **the snow-capped mountains** in the urban area.
- It has been rated as **the happiest city** in China for 13 consecutive years.
- It is buliding a **Park City**.



Ningbo (China)

POPULATION

9,544,000 people

ONE SIGNIFICANT CHALLENGE CONCERNING ECOLOGICAL PLANNING

The coordinated development of **economic growth and ecological protection** requires great efforts

FUN FACT

The cargo throughput of **Ningbo-Zhoushan Port** ranked first in the world for 13 consecutive years



Chongqing (China)

POPULATION

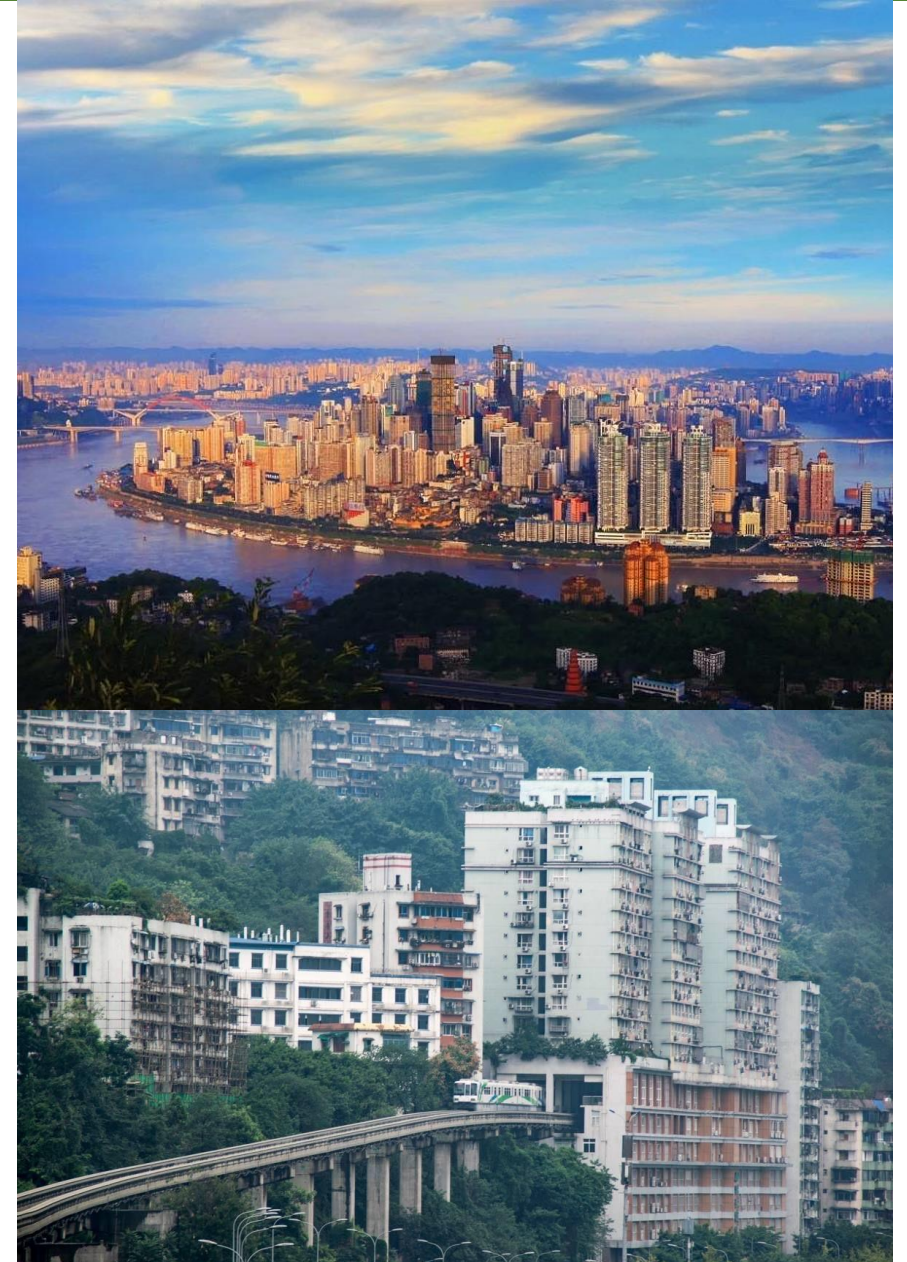
32,054,200 people

ONE SIGNIFICANT CHALLENGE CONCERNING ECOLOGICAL PLANNING

Low carbon development has not yet been incorporated into spatial planning and achieved through **sustainable land use**.

FUN FACT

Chongqing, also known as **mountain city**, is built near (in) the mountain



CCUD (China)

NAMES & STAFF

- China Center for Urban Development
under National Development and Reform Commission
- over 100 Researchers

ONE SIGNIFICANT CHALLENGE CONCERNING ECOLOGICAL PLANNING

- How make low carbon development incorporated into urban development planning and achieved **urban sustainable development**

MAIN RESEARCH AREA

- Urbanization policy in China through pilot monitoring approach
- Best practice platform of urban sustainable development
- Urban planning, including dev. planning, spatial planning, transportation planning





Colombian BiodiverCities

POPULATION

From the Caribbean plains to the Andean mountains our urban system is settled

Medellín +2.500.000 | Barranquilla + 1.200.000

Pasto, Pereira, Manizales, Villavicencio +400.000

Yopal, Quibdó +100.000

ONE SIGNIFICANT CHALLENGE CONCERNING ECOLOGICAL PLANNING

How to bring together biodiversity management and climate adaptation?

FUN FACT

In 2020's quarantine, 50% of the sounds heard were from birds, while only 15% came from transport.



BARRANQUILLA



YOPAL



VILLAVICENCIO



MEDELLIN



MANIZALES



LETICIA



PASTO



PEREIRA



QUIBDÓ

Barranquilla (Colombia)

POPULATION

1,239,518 people

ONE SIGNIFICANT CHALLENGE CONCERNING ECOLOGICAL PLANNING

Land-use change and informal settlements in the city's ecosystems and protected areas are detrimental to Barranquilla's natural resource.

FUN FACT

Barranquilla is the home of the biggest Carnival celebration of Colombia and second in Latin America.



Pereira (Colombia)

POPULATION

477,027 people

ONE SIGNIFICANT CHALLENGE CONCERNING ECOLOGICAL PLANNING

Pereira must formulate the local ecosystem restoration plan to connect our biodiversity

FUN FACT

Lover, night owl and brunette



Paris (France)

POPULATION

City = 2 165 000 people / Greater urban area = 12,5 million

SIGNIFICANT CHALLENGES CONCERNING ECOLOGICAL PLANNING

By 2026

+20% of additional greening spaces (= 100 hectares / 1 km²)

+28% of additional trees planted (= 170 000)

FUN FACT

30% of Paris (the City) is already composed of vegetation !



Indonesia

POPULATION

272,7 million people

ONE SIGNIFICANT CHALLENGE CONCERNING ECOLOGICAL PLANNING

The rapid and unplanned urbanization and urban sprawl contribute to the significant loss of Indonesia's rich biodiversity

FUN FACT

It is a home to over 1000 endangered animals



Participated Indonesian Cities



Amman (Jordan)

POPULATION

4,200,000 people

ONE SIGNIFICANT CHALLENGE CONCERNING ECOLOGICAL PLANNING

Rapid Urbanization and urban sprawl due to horizontal expansion, high population, influx of refugees, leading to depletion of limited agricultural land, high cost of service delivery, little to no access to public and green spaces and high pressure on the city's limited resources, natural heritage and infrastructure.

FUN FACT

Amman demonstrate a living lab of diversity whether human, microclimate, culture, generational, or social aspects.



Lagos (Nigeria)

POPULATION

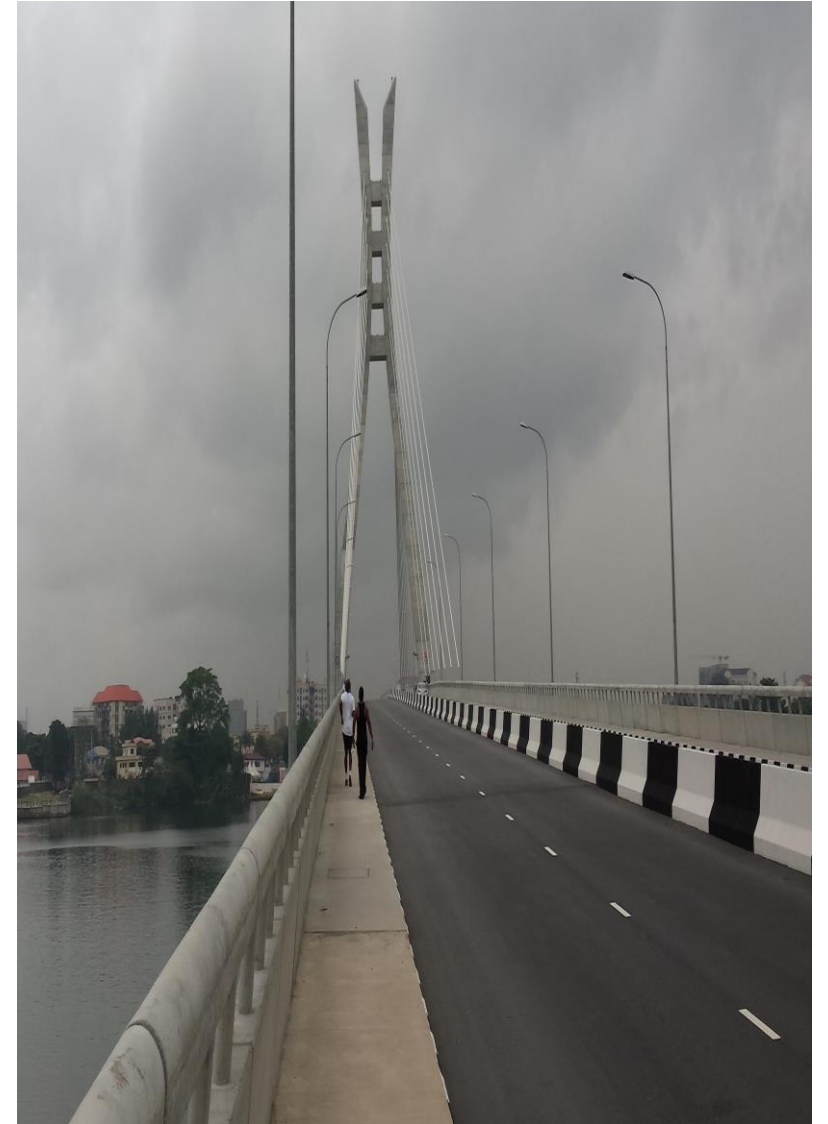
22 million people (Approx.)

ONE SIGNIFICANT CHALLENGE CONCERNING ECOLOGICAL PLANNING

Lagos has the smallest land mass in the Country and growth in population over the years has had its toll on the city's ecological balance

FUN FACT

Lagos is a state of aquatic splendor



Metropolitan Area of Asuncion (Paraguay)

POPULATION

2,000,000

ONE SIGNIFICANT CHALLENGE CONCERNING ECOLOGICAL PLANNING

Creation and protection of urban parks and green corridors

FUN FACT

Asuncion is the capital of the Americas with the greater number of bird species



Lima & Callao (Peru)

Metropolitan Area

POPULATION

10,702,755

ONE SIGNIFICANT CHALLENGE CONCERNING ECOLOGICAL PLANNING

Between 2013 and 2019, urban expansion and a lack of planning regulation has contributed to the loss of 680 hectares of coastal hills ('lomas') ecosystems areas.



FUN FACT

Lima hosted for the first time the Pan American Games in 2019 where the image of the flower of Amancaes (endemic species from the coastal hills) was used for the branding.

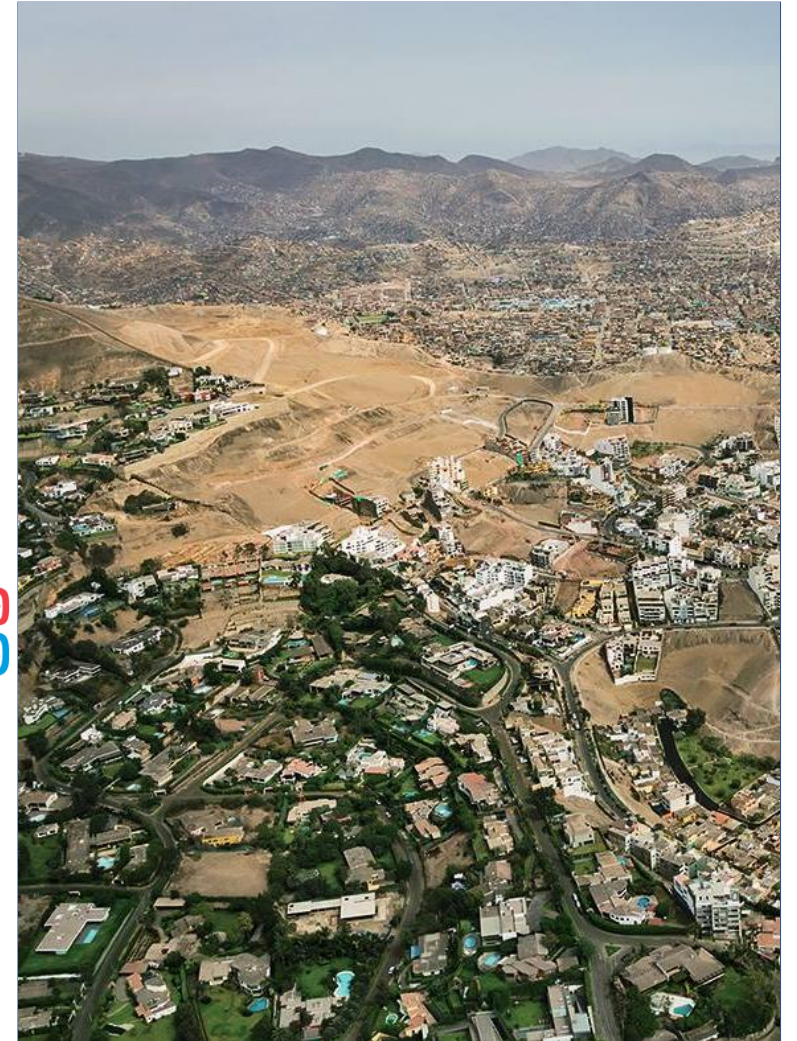


IMAGE SOURCE: Evelyn Merino Reyna "Lima Más Arriba"
www.facebook.com/limamasarriba

Kigali (Rwanda)

POPULATION

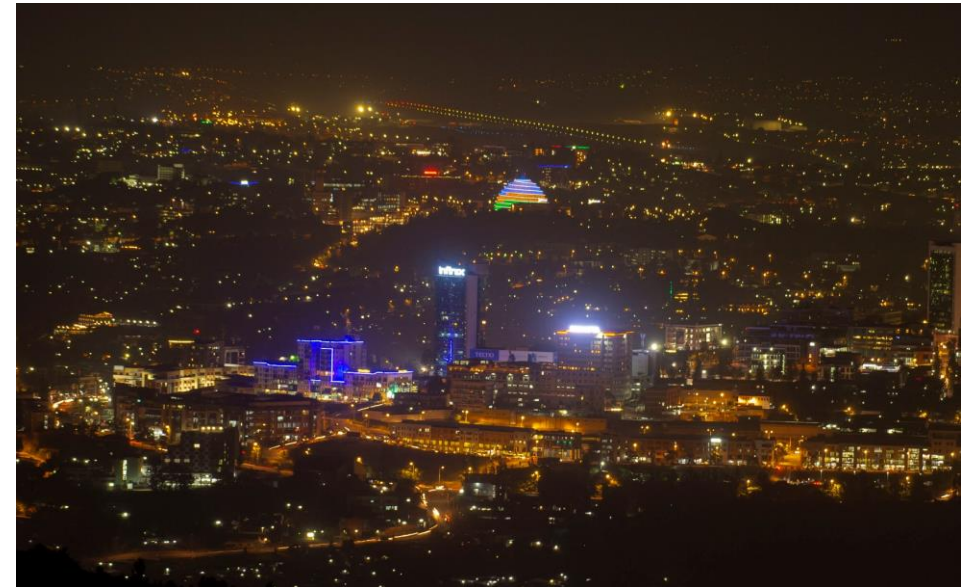
1.6 Million during the night and 2 Million During the Day

ONE SIGNIFICANT CHALLENGE CONCERNING ECOLOGICAL PLANNING

Landslide

FUN FACT

- BBC Travel has called Kigali “**the most inviting city in Africa.**”
- It is also often addressed as the **continent’s greenest and cleanest city** and one of the **safest cities** on the continent.



Sierra Leone

POPULATION

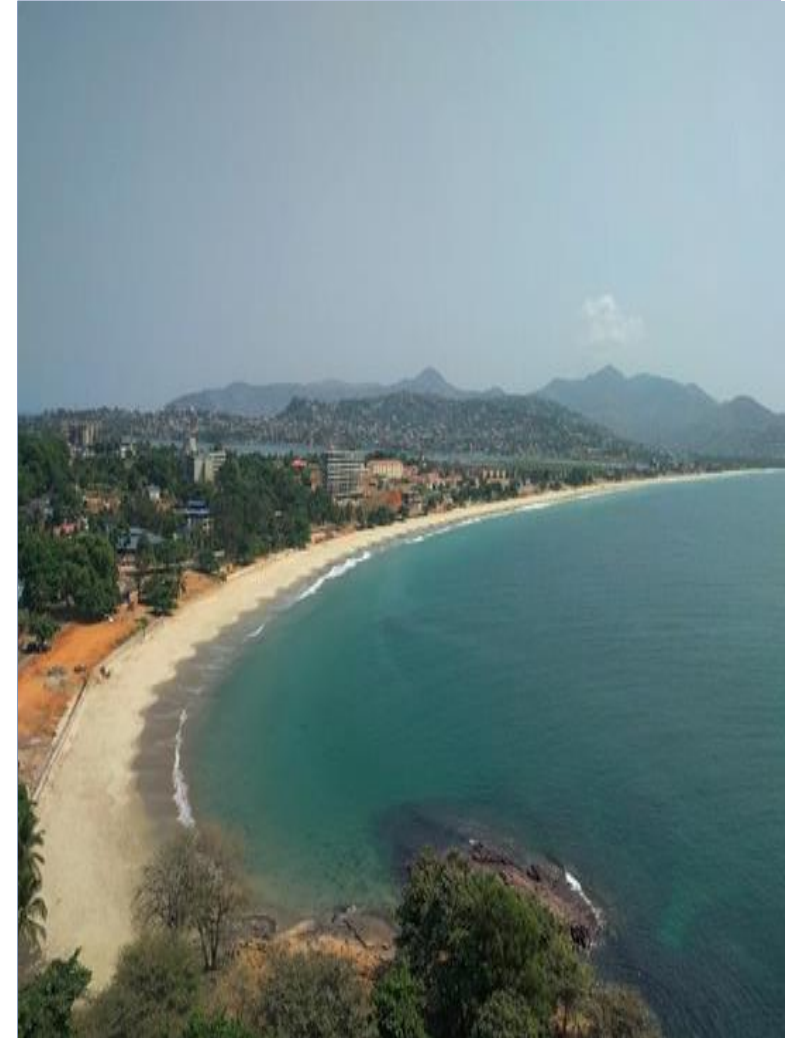
7,977,000 people

ONE SIGNIFICANT CHALLENGE CONCERNING ECOLOGICAL PLANNING

Lack of legal framework, urban sprawl, logging, sand mining are the contributing factors facing ecological planning

FUN FACT

- Sierra Leone is a Country in West-Africa, it lies on the extreme point of the Western Coast. It has the roundest map in the world. It is the home of Bruno – the chimp that planned and executed its escape from a Freetown zoo [link](#)
- The name Sierra Leone was derived from the Portuguese phrase “Sierra Lyoa” which means “Roaring/Lion Mountain” as was given by the Portuguese sailor Pedro de Sintra who first sailed closest to its coast. Sierra Leone is the Italian version.



Bo City (Sierra Leone)

POPULATION

175,000 People

ONE SIGNIFICANT CHALLENGE CONCERNING ECOLOGICAL PLANNING

Increase in population growth and housing demand with unplanned Neighborhood impede preservation and conservation of natural assets

FUN FACT

The meaning of the name given to the city in our local language Bo-Lor . (Its yours)



Madrid (Spain)

POPULATION

3,312,310

ONE SIGNIFICANT CHALLENGE CONCERNING ECOLOGICAL PLANNING

Madrid has sprawled out over the last two decades much further than its growing population requires

FUN FACT

It is one of Europe's sunniest capital cities



İzmir (Turkey)

POPULATION

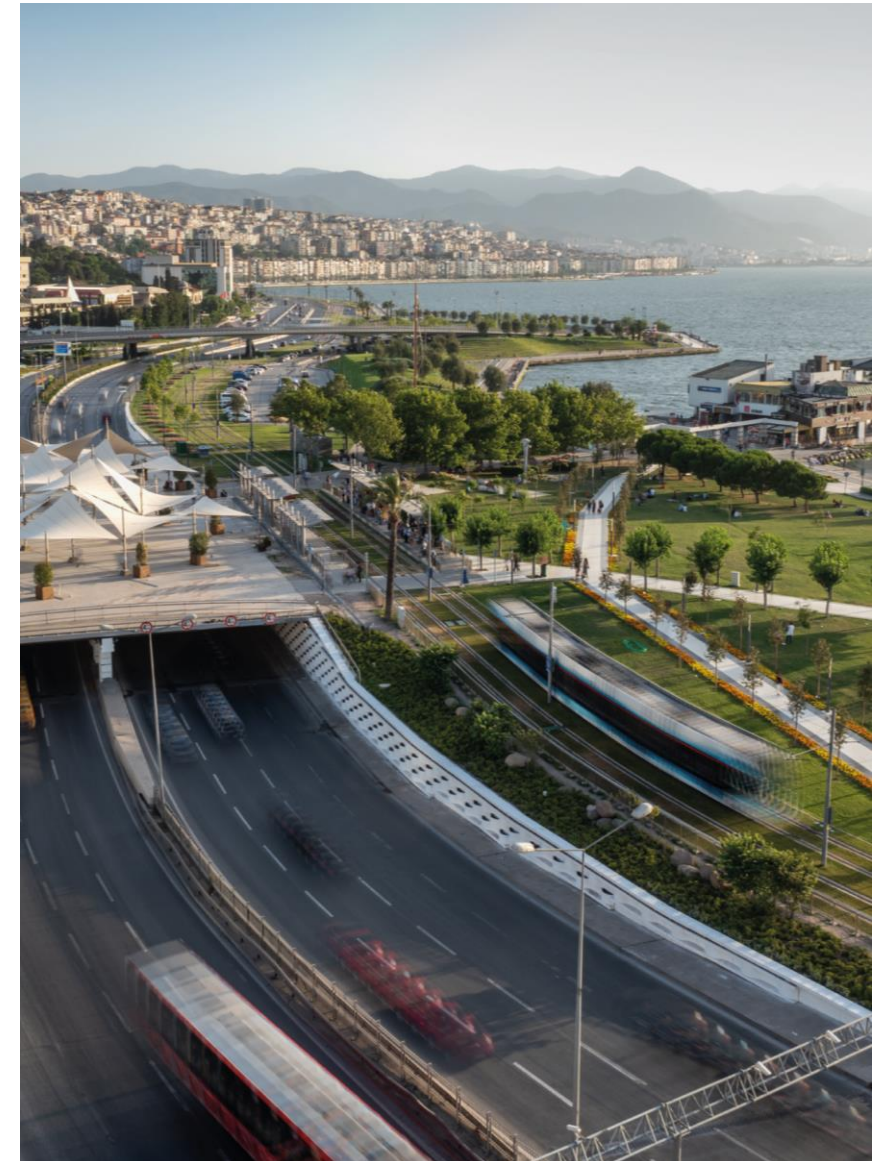
4.425.789 People

ONE SIGNIFICANT CHALLENGE CONCERNING ECOLOGICAL PLANNING

Planning blue-green corridors in a dense urban environment

FUN FACT

You can walk on the sea in İzmir



Glasgow (Scotland, UK)

POPULATION

633,100

ONE SIGNIFICANT CHALLENGE CONCERNING ECOLOGICAL PLANNING

Glasgow has a significant proportion of post-industrial
Vacant and

Derelict land, which over 60% of the population live
within 600m from

FUN FACT

GLASGOW'S GAELIC NAME IS *GLASCHU*, MEANING 'GREEN
SPACE'

