

Current Situation

2018 Starting date of M

 1.3M Pop

 0.58M Jobs

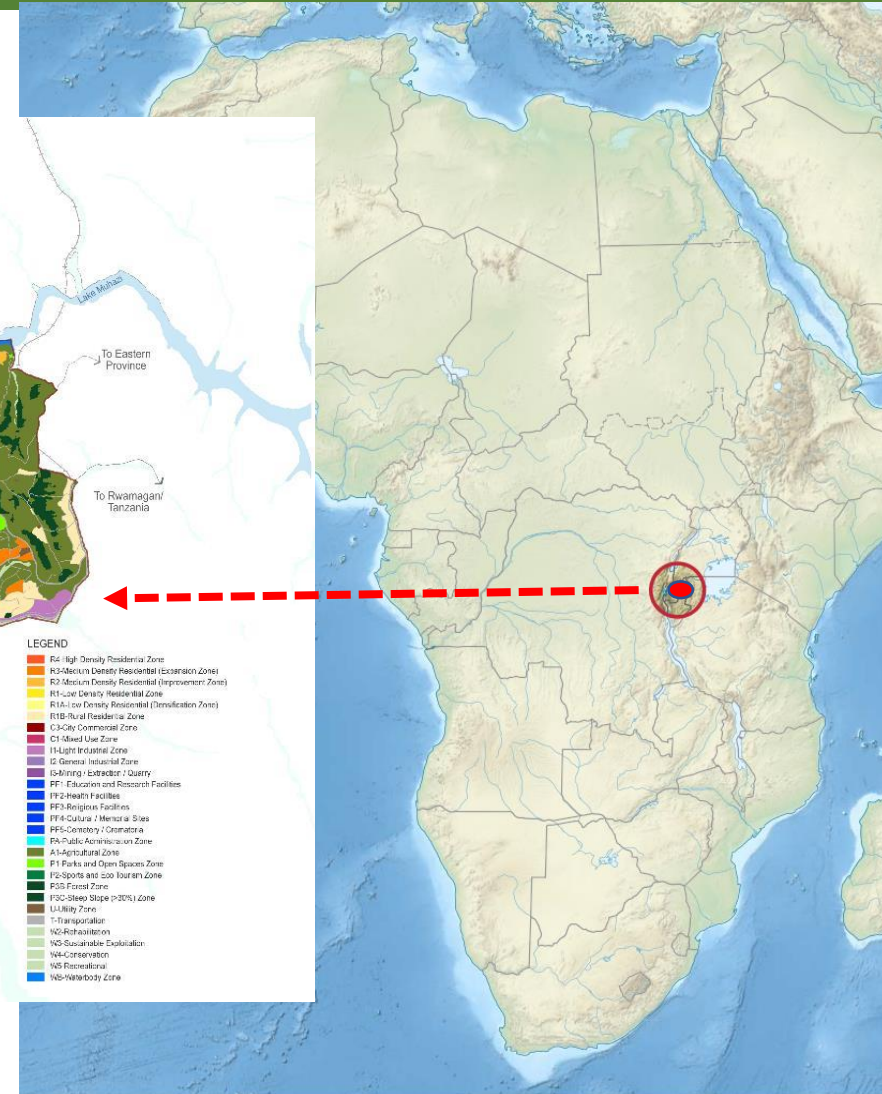
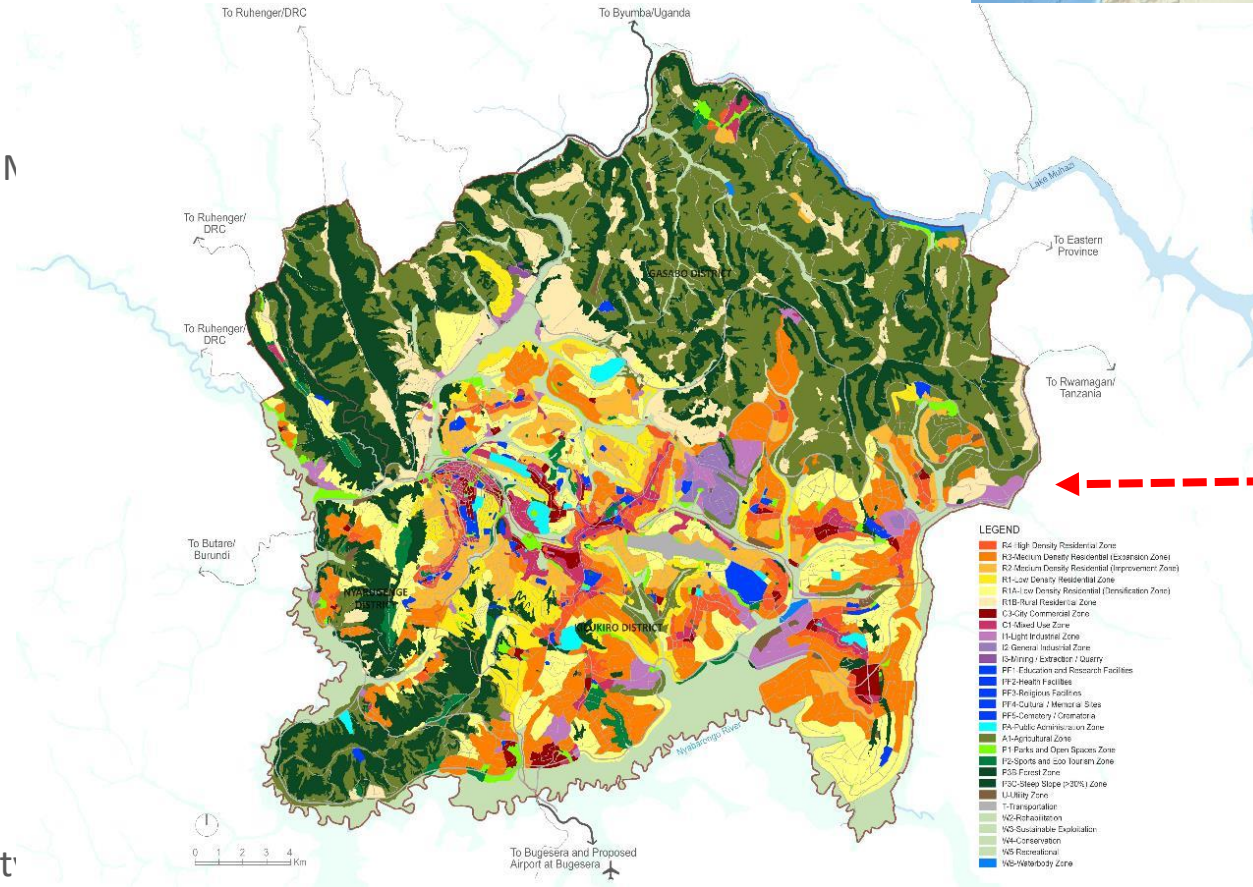
Since 2013:

-5% of Agricultural Land

-5% Open Spaces

+20% of Residential (Low Densit

+30% Commercial / Mixed-Use



Area of Kigali: 731 km²

Proposed Plan 2050

 3.8M Pop

 1.7M Jobs

55% Protected and Agriculture Land

45% Developable Area

5,000 Ppl/sqkm GROSS

70/90 DU/HA

11,500 Ppl/sqkm Gross NET

32.25% of the land reserved to conserve biodiversity and protect the ecological integrity of nature areas (232.5 Sqkm)



BBC Travel has called Kigali “the most inviting city in Africa.”



It is also often addressed as the continent’s greenest and cleanest city and one of the safest cities on the continent.

2

Area of Kigali: 731 km²

- 1. Rapid urbanization that lead to the growth of unplanned areas and sprawl,**
- 2. Population growth,**
- 3. Past poor management of the Urban Wetlands and land use, ...**



RUDP II is the comprehensive which intends to:

- ✓ Upgrade 4 informal Settlements in the city of Kigali
- ✓ Rehabilitate 5 degraded wetlands in the city of Kigali
- ✓ City of Kigali revised Master Plan that promotes: [(i) Preserve existing open space; (ii) Built new open space; (iii) Introduce car free zones; (iv) Buy development rights that prohibit certain types of development on land parcels)]
- ✓ The development of landscape analysis and pre-feasibility study of Urban Nature Based Solution to reduce flood risk and strengthen resilience in the City of Kigali.
- ✓ Development of the Kigali City Storm Water Master Plan for the next 30 years.

