

# Sustainable Cities Impact Program

## Overview of the Strategic Direction for GEF-7

May 2018

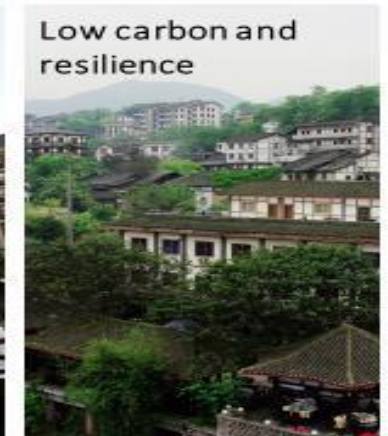
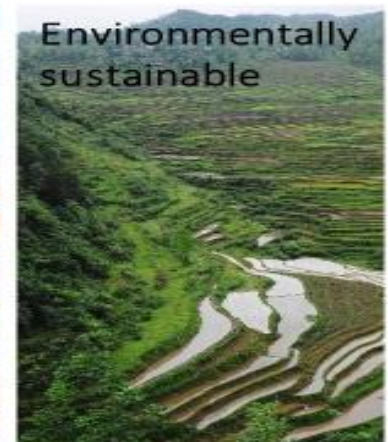
# Why Sustainable Cities?

- Population growth and expanding middle class → Cities facing **increased demand** for building, mobility, energy, water and waste management
- Major **driver of environmental degradation** → GHG emissions, degradation or loss of ecosystem services (land, water and biodiversity), waste and pollution
- Challenges facing cities are interlinked and cannot be tackled separately – Cities need a **holistic approach** to urban planning and financing
- The urban infrastructure and social environment need to be integrated for a city to be **inclusive, safe, resilient and sustainable**.
- For the GEF – alignment of focal area priorities to **harness synergies** and **minimize negative tradeoffs** in generating Global Environmental Benefits (GEBs)

# GEF Integrated Approach

Launched as a Pilot in GEF-6....

1. Move from isolated, individual city investments to coordinated sustainable urban planning
2. Set up a platform for the best technical knowledge, common methodologies, innovation and quick exchange on sustainable urban investments
3. Connect GEF implementing agencies working on urban space, and through the platform all IFIs



# Sustainable Cities Program

- ✓ Integrate global environmental considerations and resilience into city management – *urban planning, design, and action (investment)*
- ✓ Multi-scale **partnerships** impact – *Global Platform, National level frameworks, Cities / Municipalities*
- ✓ Promoting **cross-sector** engagement



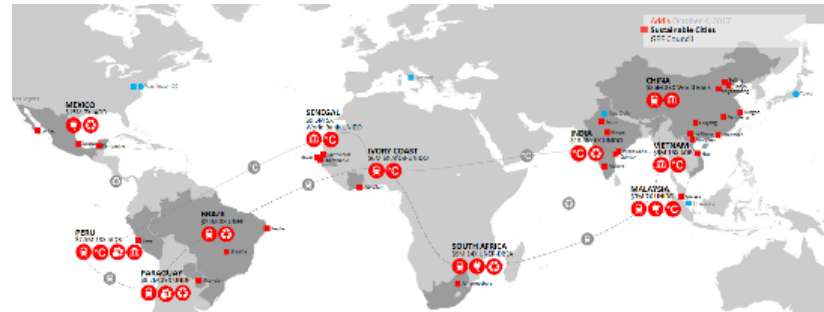
# Program Framework

## Global Platform for Sustainable Cities

A forum for knowledge sharing and partnership to achieve urban sustainability



## City-level Projects (28 cities, 11 countries)



### Phase I Sectors for integration



Transport



Energy



Solid Waste Conservation



Climate Change



Governance



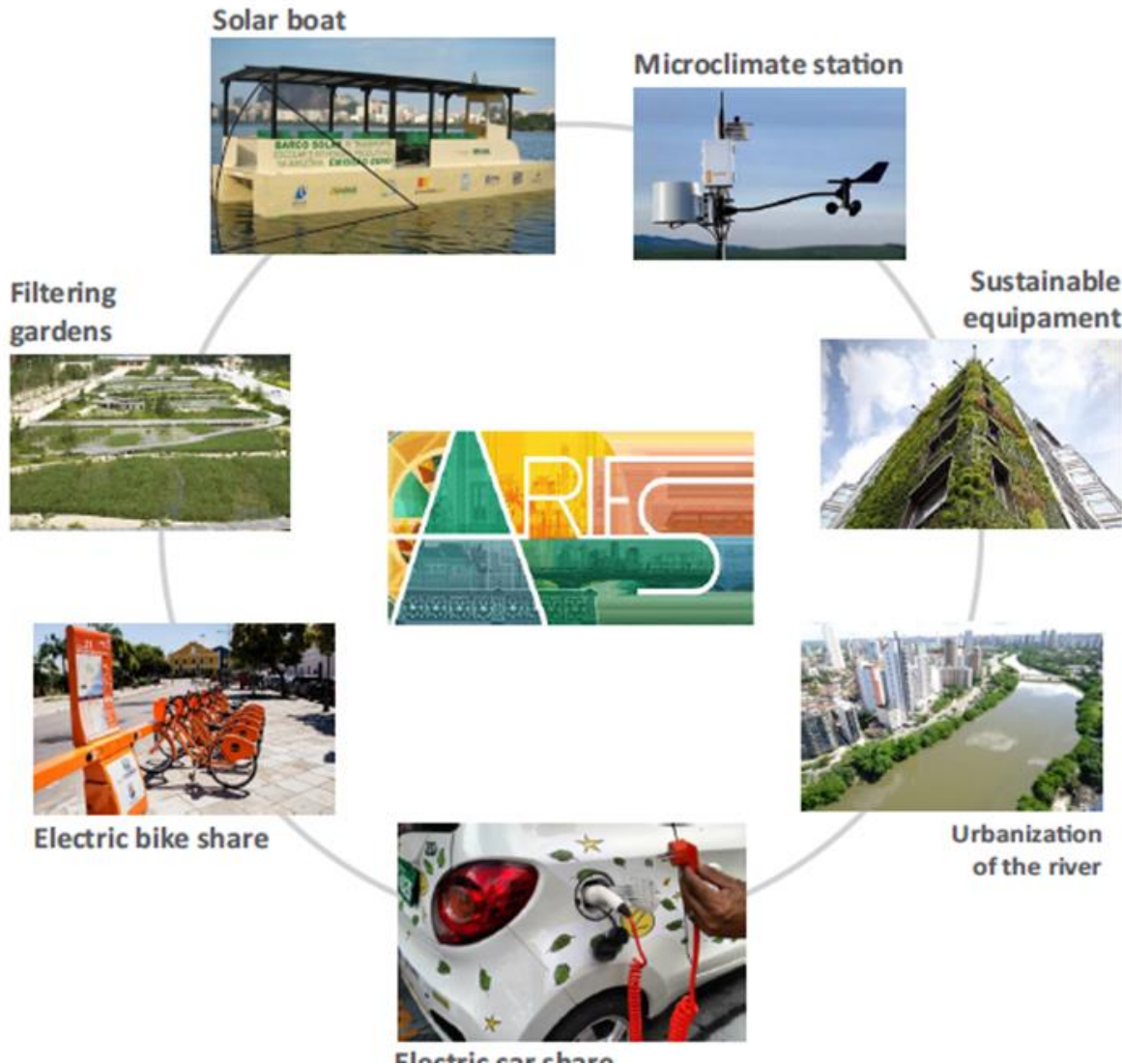
PIONEERED BY THE  
ROCKEFELLER FOUNDATION  
100





# Planning for integrated urban sustainability

## *Example - Recife, Brazil*



Partners:

**MCTI** Ministério da Ciência, Tecnologia e Inovação



# GEF-7 Strategy

## Building on the GEF-6 Sustainable Cities IAP

- Sustainable urban planning
  - Departure from single sector investment
  - Supporting mayors' efforts in urban planning
- Framework for advancing Urban Sustainability
  - Global platform for knowledge exchange
  - Investment program in 28 cities across 11 developing countries

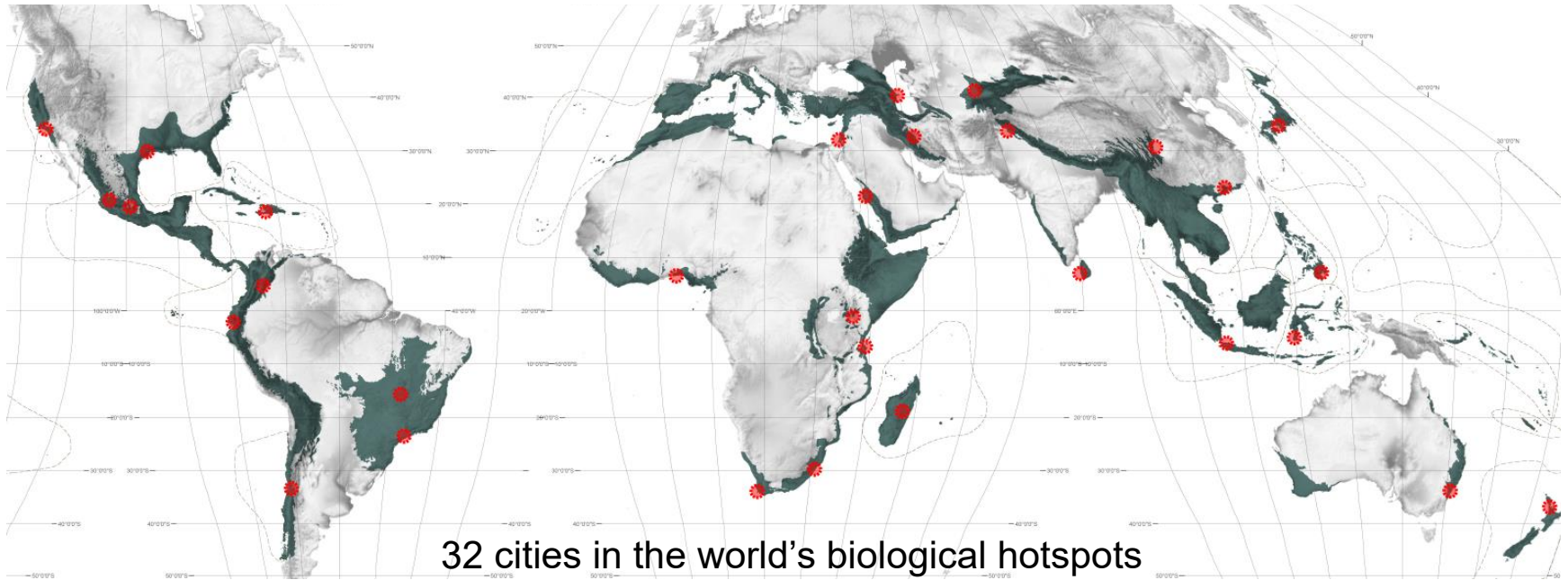
# **GEF-7 Strategy**

## **Categories for Investment**

- **Evidence-based Spatial Planning**—National, Regional, Local
- **Decarbonizing Urbanization with Infrastructure Integration** at National, Regional, and Local Scales
- **Building Deep Resilience** with smart systems and slum solutions, and
- **Cascade Financing Solutions** for Urban Sustainability



# Additional Priorities for Programming



32 cities in the world's biological hotspots

- Integrated land use planning to mainstream BD and prevent habitat loss/degradation in peri-urban areas (**BD and LD Focal Areas**)
- Tackling Marine plastics through smart solid waste management (**IW Focal Area**)
- Integrated land use planning to prevent agricultural land loss; logistics/transport system for food distribution (**Urban Food system**)
- Urban design that is able to absorb potential shocks (**Urban Resilience**)

# Addressing Multiple Focal Area Priorities in the Urban Space

Focal Area	Objectives and Priorities to be addressed through the IP
Biodiversity	<ul style="list-style-type: none"> <li>• Integrate biodiversity into urban planning – focus on conservation of threatened wildlife species and habitats affected by urbanization</li> </ul> <p><b>Conservation of Biodiversity</b></p>
Climate Change Mitigation	<ul style="list-style-type: none"> <li>• Urban-related GHG emissions avoidance – integrating low-carbon technologies into the urban sector, including energy efficiency, public transport, district heating systems), renewable energy development (solar, wind, co-generation, waste-to-energy), and solid waste and wastewater management</li> </ul> <p><b>Mitigating GHG Emissions</b></p>
Land Degradation	<ul style="list-style-type: none"> <li>• Sustainable land use management at the rural-urban interface</li> <li>• Restoration of degraded production landscapes in the rural-urban interface</li> </ul> <p><b>Arresting Land Degradation</b></p>
International Waters	<ul style="list-style-type: none"> <li>• Decreased pollution of rivers, deltas and coastal areas associated with urbanization</li> <li>• Advance efficient water use and re-use in cities and metropolitan areas</li> </ul> <p><b>Reduce Pollution and Waste</b></p>
Chemicals and Waste	<ul style="list-style-type: none"> <li>• Reduction of POPs, ODS, and Mercury in built infrastructure, industry and product lifecycle management and disposal of electronic and industrial waste with heavy metals and solvents, pesticide application for public health and vector control, and urban run-off</li> </ul> <p><b>Reduce POPs, ODS and Mercury</b></p>

# Criteria for Countries

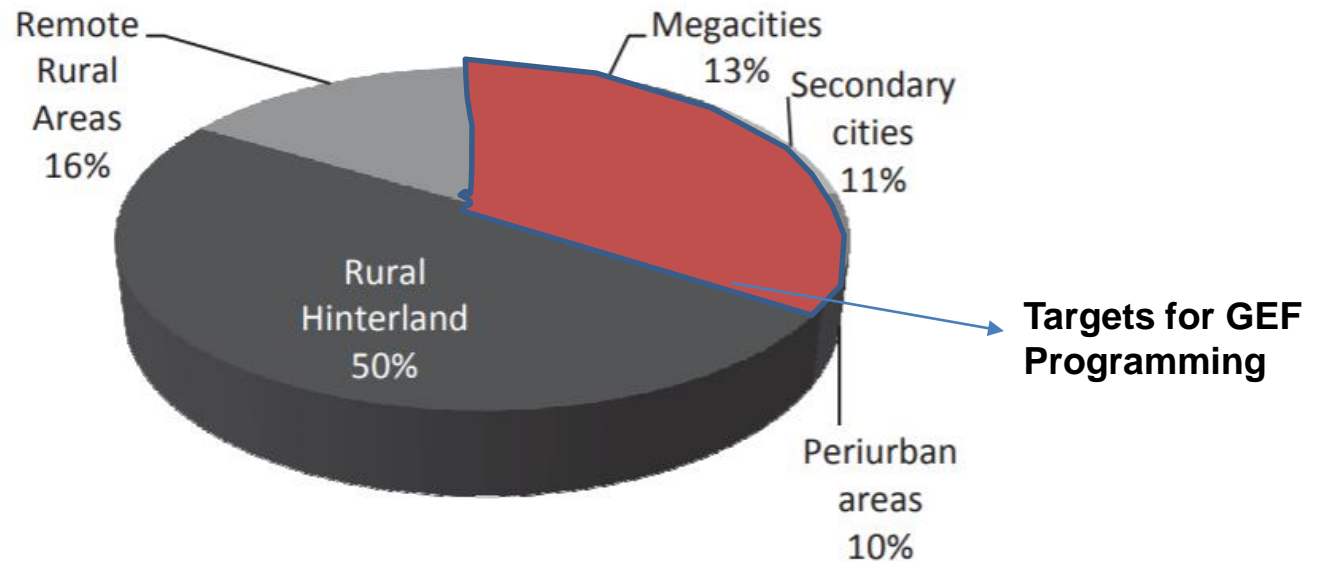
- Willingness of **national governments to support local governments** in developing, shaping and participating in the program
- Willingness to **embrace integrated urban planning** and go beyond sectoral focuses.
- Commitment to **mobilize finance** by utilizing the GEF grant to achieve a large leverage ratio.
- Commitment to improve **sustainability of municipal financing** over time and demonstrate credible financing plans for proposed activities and concrete catalytic investment opportunities.
- Willingness to **actively engage with GPSC** through a network-based approach.

# Africa Region

## Urbanization challenges:

1. Population density not matched with capital density
2. Disconnected land and spatial fragmentation

Figure 6: Distribution of Population in Sub-Saharan Africa



Source: World Bank 2010.

# Thank you for your attention

## Questions?



GLOBAL ENVIRONMENT FACILITY  
INVESTING IN OUR PLANET