

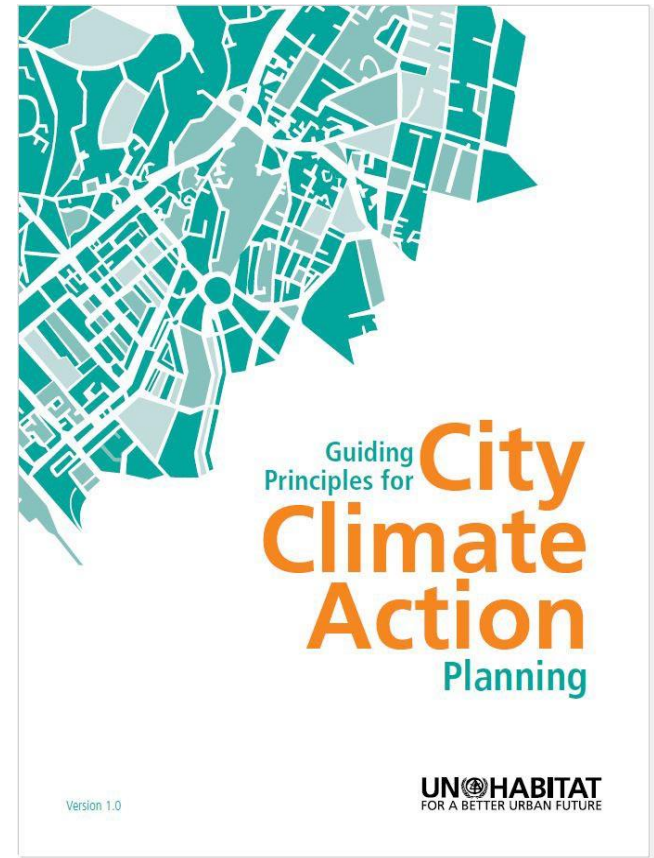
Global Platform for Sustainable Cities
23-24 April 2018



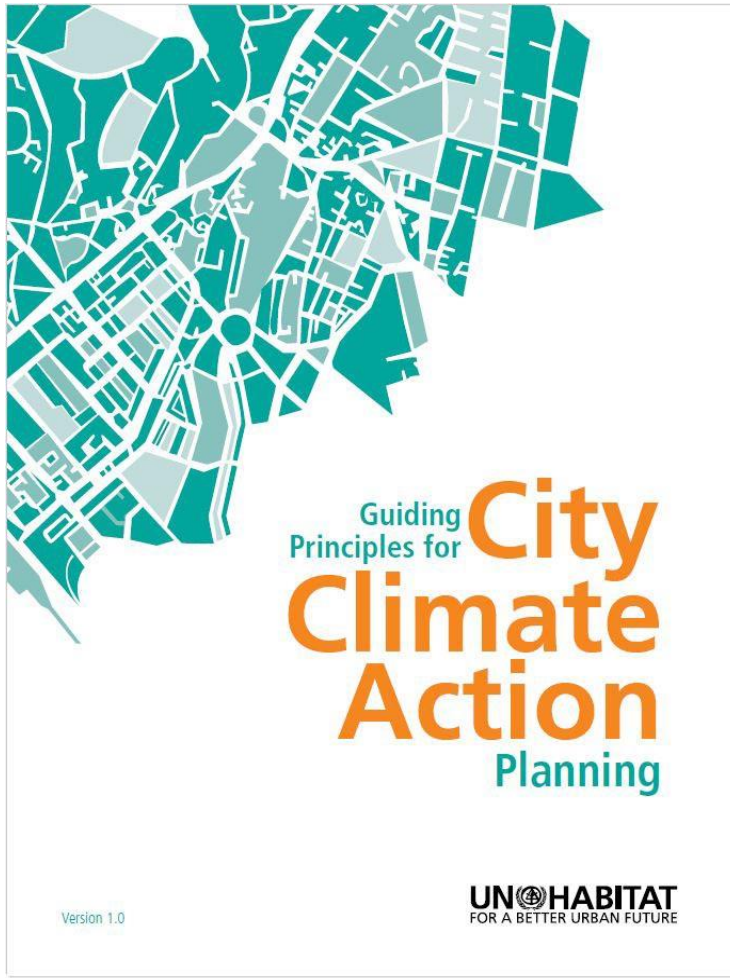
**Guiding Principles for City Climate
Action Planning**
***Encouraging Ambitious
Climate Action***

Outline

- 1) Introduction to *Guiding Principles*
- 2) Using Guiding Principles to Encourage Ambitious Climate Action – **Case Study: *Glasgow***
- 3) Possible application GEF Sustainable Cities

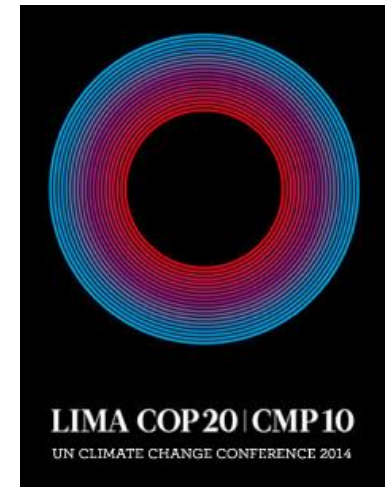


1. Introduction to Guiding Principles



December 2014

- **Lima** (COP-20) – Half day meeting w/ 16 potential partners to discuss



'Go' decision

- ✓ Multi-stakeholder process
- ✓ Build community of practice

1. Introduction to Guiding Principles



Process (2015):

- ✓ **Survey** of partners
- ✓ Two **expert group meetings**
- ✓ Eight person **Drafting Committee**
(including GEF's Xiaomei Tan)



1. Introduction to Guiding Principles



Process (2015)

- ✓ **Draft** *Guiding Principles*
- ✓ **Review** by broader set of partners
- ✓ **Confirm** endorsements

1. Introduction to Guiding Principles



✓ **Collect** forewords

*"The **Guiding Principles**... give guidance & impetus to city leaders & city planners to help achieve the global 2-degree target...."*

*"The development of the **Guiding Principles** was built on strong inter-agency collaboration & multi-stakeholder consultation..."*

– Naoko Ishii, GEF CEO & Chairperson

1. Introduction to Guiding Principles

4 December 2015

**Climate Summit
(COP-21)**

***Launch of Guiding
Principles***

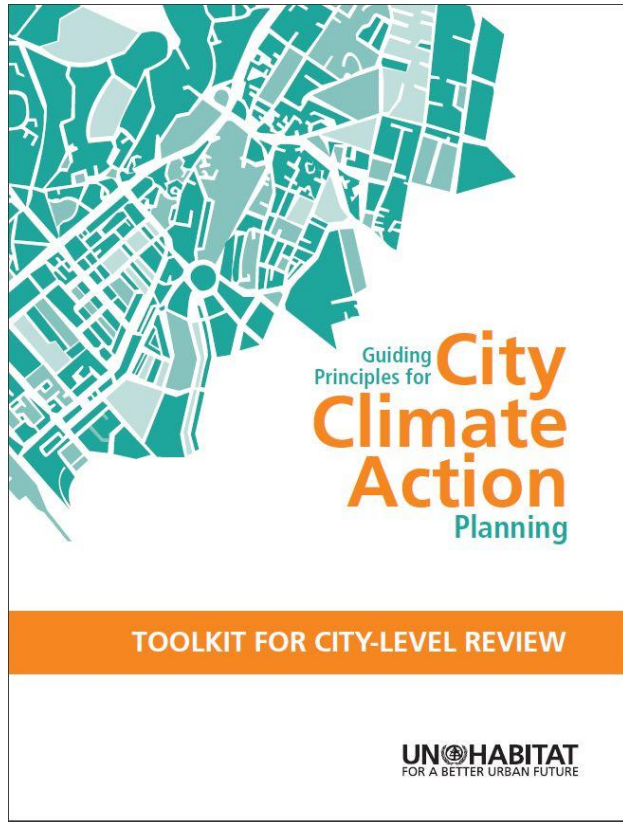
Key endorsing partners:

- Mayor of La Paz
- GEF
(Dr. Gustavo Fonseca)
- WRI
- ICLEI



Paris

1. Introduction to Guiding Principles

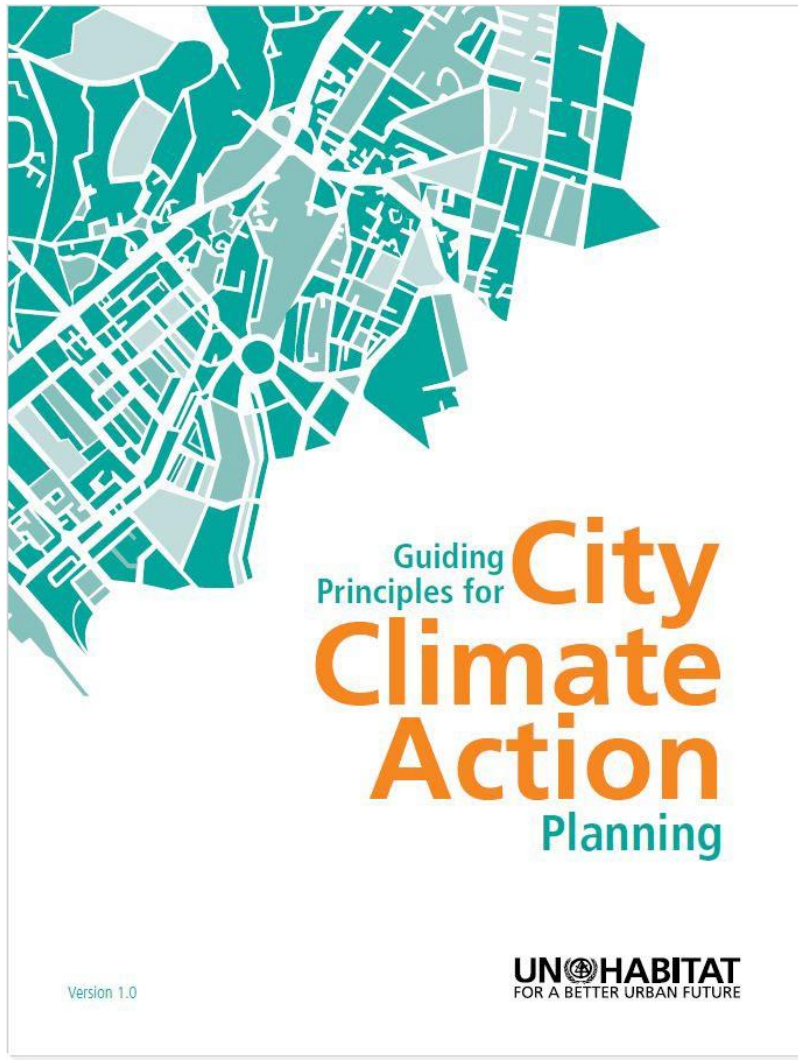


Jan – April 2016

Develop...

- ✓ **Set of indicators** – to *operationalize* Guiding Principles
- ✓ **Toolkit** – to equip partners to *apply* Guiding Principles in cities

1. Introduction to Guiding Principles



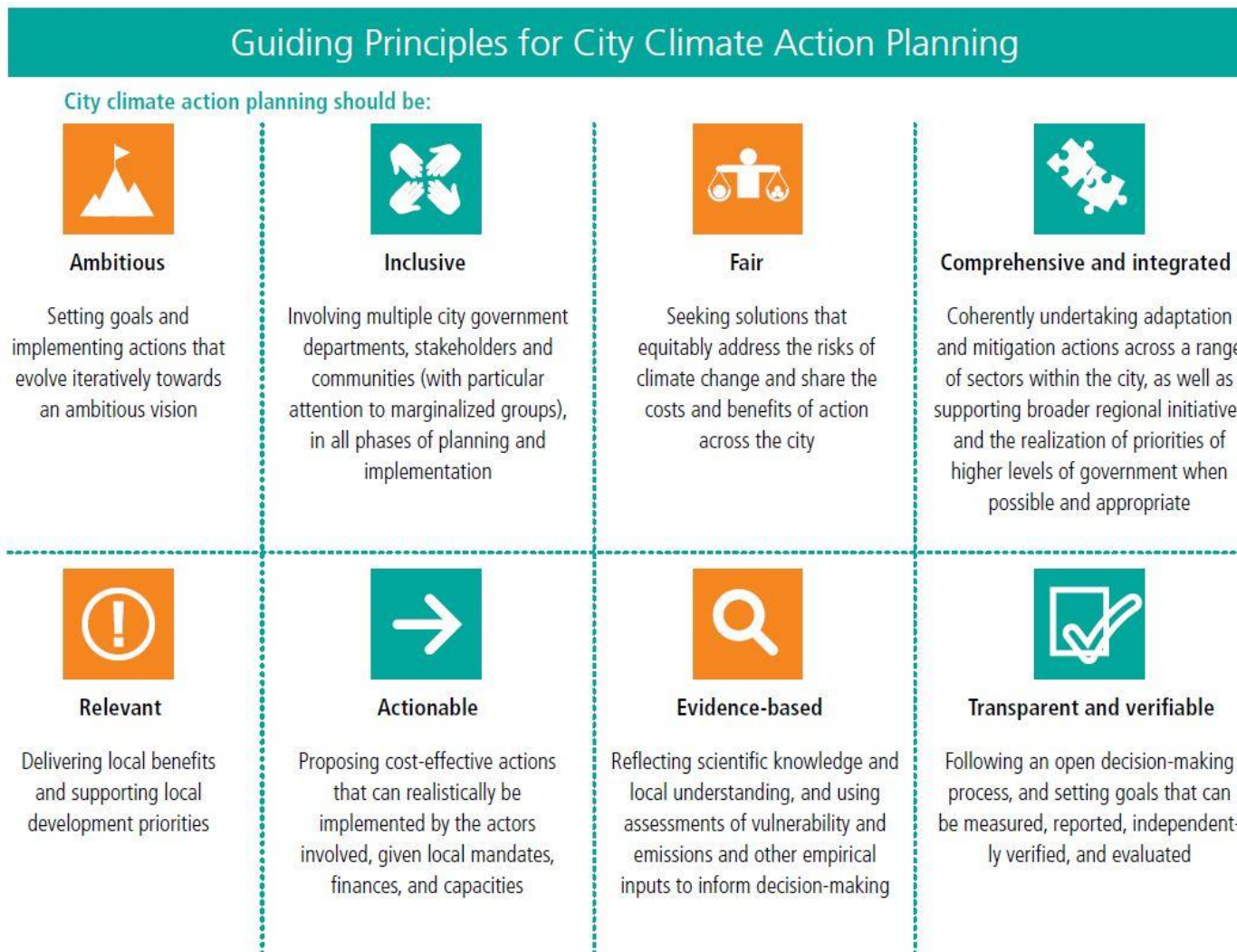
**Are – 8 principles
& 18 indicators**

Are not –
a step by step
planning process

*Can be applied to
various climate action
planning processes, to
help strengthen them*

Evaluation tool

1. Introduction to Guiding Principles



1. Introduction to Guiding Principles

Relation to Sustainable Dev't. Goals



SDG Target 11.b: *"By 2020, substantially increase the # of cities & human settlements adopting &*

implementing integrated... plans towards inclusion, resource efficiency, mitigation & adaptation to climate change [&] resilience to disasters..."

The Guiding Principles & indicators...

- ✓ *Flesh out integrated, inclusion, comprehensive (mitigation & adaptation to climate change)*
- ✓ *Also gauge 5 other principles: ambitious, fair, etc.*

1. Introduction to Guiding Principles



Comprehensive and integrated

Application in pilot cities

- ✓ **Vilankulo** – Recommended a **mitigation dimension** to resilience-building actions (e.g., LED/solar street lighting)
- ✓ **Glasgow** – Provided a **benchmark** for advocates to lobby for a more ambitious mitigation target (*also see below*)
- ✓ **Lemon Grove** – Proposed **expanded access/outreach** to poor families for education & supplies to reduce energy use



Ambitious



Fair

1. Introduction to Guiding Principles



“A very useful tool.... Simple and easy to follow.... The toolkit allowed me to see further.... Very comprehensive.... We support the tool”.
- Cesar Carreño, Sr. Project Officer, Low Carbon Cities, ICLEI

Review of submittals for compliance w/ Compact of Mayors (now GCoM)

- *Guiding Principles indicators used as Key Performance Indicators*
- *Review: “With which Principles have you **complied**? Which have you **overlooked**?”*

Example application: Inclusive

- ✓ **City X** – The climate action plan did not mention how many public consultations had been undertaken

2. Using Guiding Principles to Encourage *Ambitious* Climate Action



Ambitious

Setting goals and implementing actions that evolve iteratively towards an ambitious vision

2. Using Guiding Principles to Encourage *Ambitious* Climate Action



Ambitious

Setting goals and implementing actions that evolve iteratively towards an ambitious vision

Copenhagen

Targets:

- **2015** – Cut emissions 20 % from 2005
- **2025** – **Carbon neutral**



Progress:

- By **2014**, had decreased total annual emissions by **31 %**

How?

- ✓ Transform city's **energy supply**.
 - Establish @ 100 wind turbines
 - Make district heating carbon neutral
- ✓ Create **neighborhoods** w/ minimal transport & energy requirements

2. Encouraging Ambitious Climate Action: Case Study *Glasgow*



Ambitious

Setting goals and implementing actions that evolve iteratively towards an ambitious vision

Applied all 18 indicators, including 3 of 'Ambition'

Indicator 1A – Mitigation

City's emission reduction target...

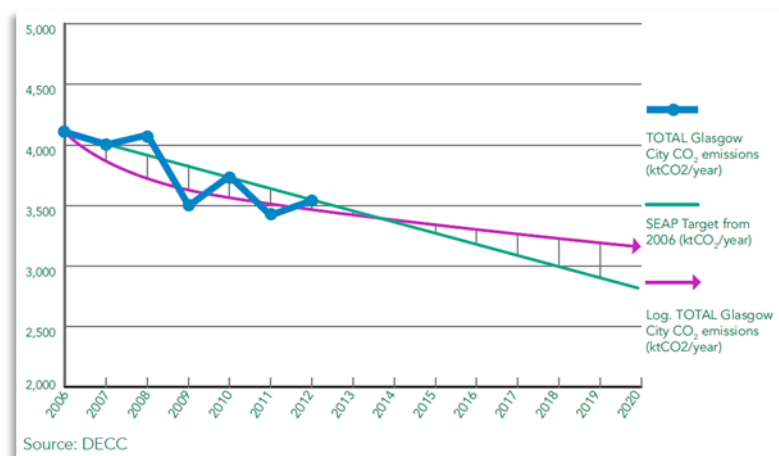
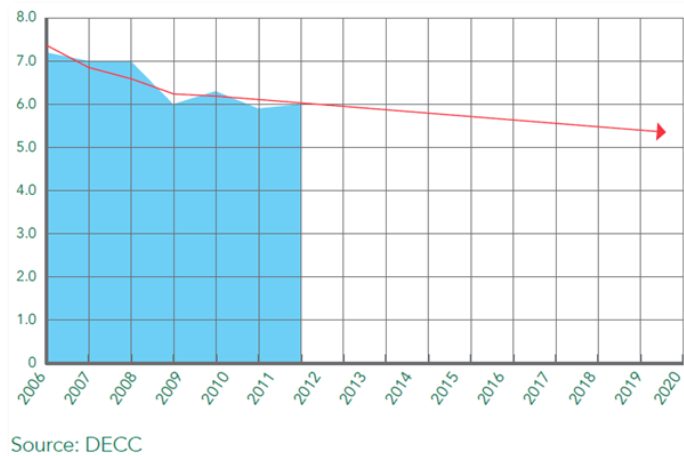
✓ ***Meets or exceeds*** those found in country's NDC

AND/OR

✓ City has set a 2050 target of ***80 % or greater*** reduction from base year

2. Encouraging Ambitious Climate Action: Case Study *Glasgow*

Glasgow's Target: 30 % reduction of emissions by 2020 from 2006 levels



2006 to 2020

2. Encouraging Ambitious Climate Action: Case Study *Glasgow*

Glasgow's Target:

✓ **Exceeds** EU 2020 climate target of 20 % (or 30 %) reduction

*Note: Scottish Government has set a long-term target to reduce emissions for 2050 by **at least 80 %** from 1990*

Source	Baseline year	Target 2020	Target 2030	Target 2050
EU policy framework for climate and energy	1990	–	40%	–
EU Europe 2020 strategy, 2010	1990	20% CO ₂		
Climate Change Act (UK), 2008	1990	34% CO ₂		80% CO ₂
Climate Change (Scotland) Act ¹ , June 2009	1990	42% GHG	50% GHG	80% GHG
Glasgow SEAP, 2010	2006	30% CO ₂	none	none

¹The reduction targets include emissions from international aviation and shipping, six GHG (greenhouse gases), including CO₂

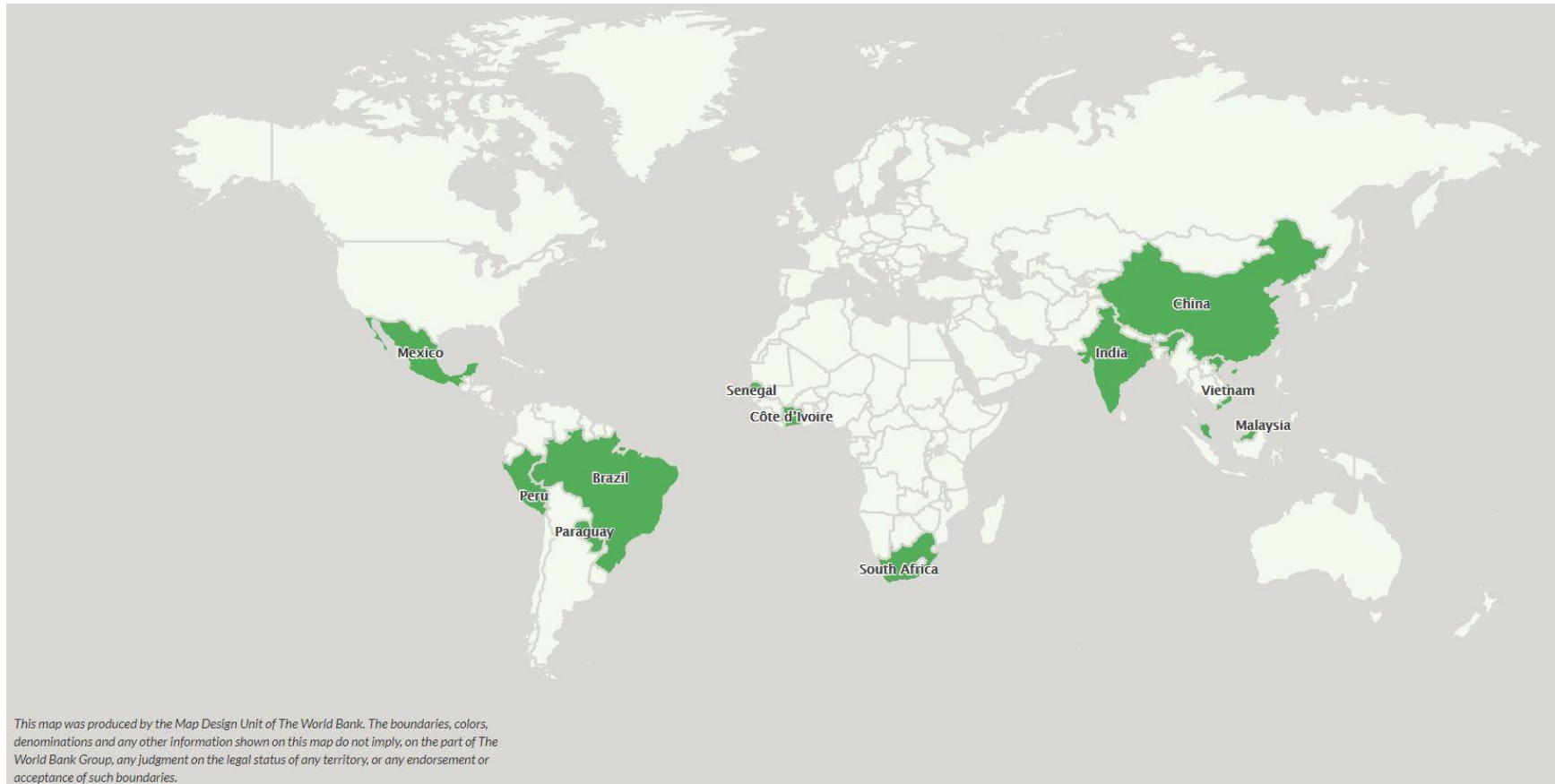
2. Encouraging Ambitious Climate Action: Case Study *Glasgow*

Therefore, team (Gonzaga University) found '**full compliance**' with the Guiding Principle 'ambitious'

GUIDING PRINCIPLES ³	INDICATOR ⁴		ASSESSMENT
AMBITIOUS – Setting goals and implementing actions that evolve iteratively towards an ambitious vision. <i>PLAN</i>	1A	Mitigation. For a given long-term target year (of 20 years or more), a city-level plan's long-term emission reduction targets meet or exceed those found in the Nationally Determined Contributions (NDCs) of the corresponding country AND/OR the city has set a 2050 target of 80% or greater reductions from base year (or equivalent).	

*By applying the full set of **Guiding Principles indicators**, teams can recommend ways to make plans and processes more **inclusive, comprehensive, integrated, evidence-based, etc.***

3. Possible application of Guiding Principles: *GEF Sustainable Cities*



Proposal: Mission to pilot application in 1 city, in next several months

<https://unhabitat.org/the-guiding-principles/>



THANK YOU!
Robert.Kehew@un.org