



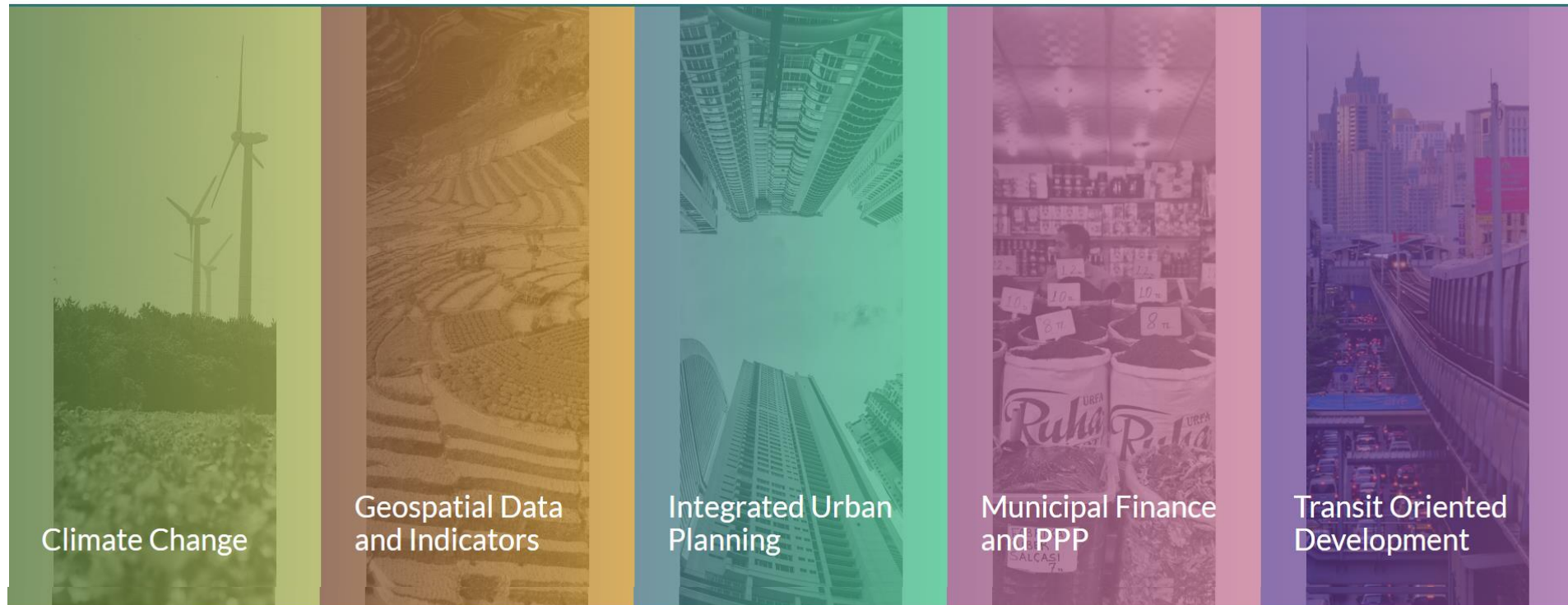
Global Platform for Sustainable Cities

Next Steps

Qiyang Xu and Lincoln Lewis
Program Coordinators, GPSC



May	
Regional Workshop for African Countries, Abidjan	May 14-16
Abidjan Sustainability Outlook Report Assessment	In discussion
June	
ICLEI World Congress, Montreal	June 19-22
54 th GEF Council, Da Nang, Vietnam	June 24-26
54th GEF Council, Da Nang, Vietnam	June 27-28
Melaka Sustainability Outlook: Final Report	
Knowledge Product: Municipal PPP Manual	
#4 Newsletter	
Spatial data integration in the City Dashboard	
July	
Knowledge Product: TOD Implementation Resources & Tools	
September	
Global Climate Summit, San Francisco, USA	September 12-14
LAC Regional Workshop	
Late 2018 to 2019	
RT Training Academy #1	
3rd GPSC Annual Meeting	



OUR PARTNERS



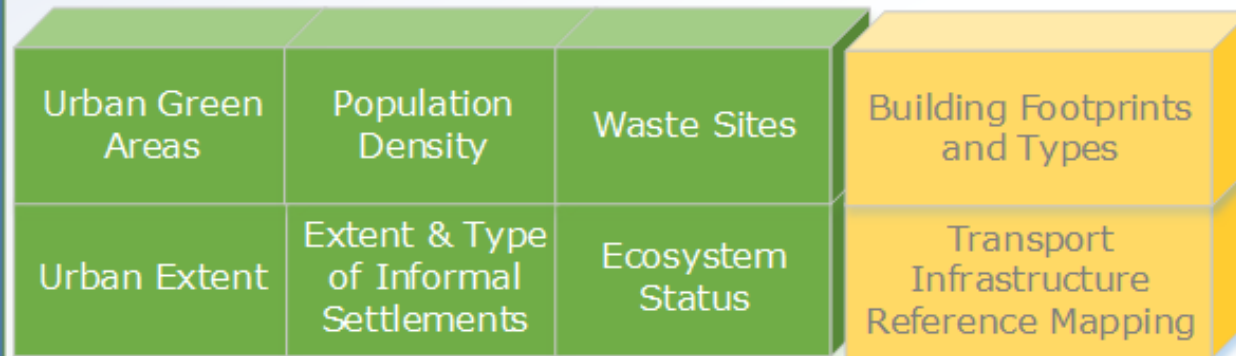
Primary and Secondary Geospatial Product and Service for 28 cities

PRIMARY PRODUCTS

BASELINE LAND USE/LAND COVER DATASET

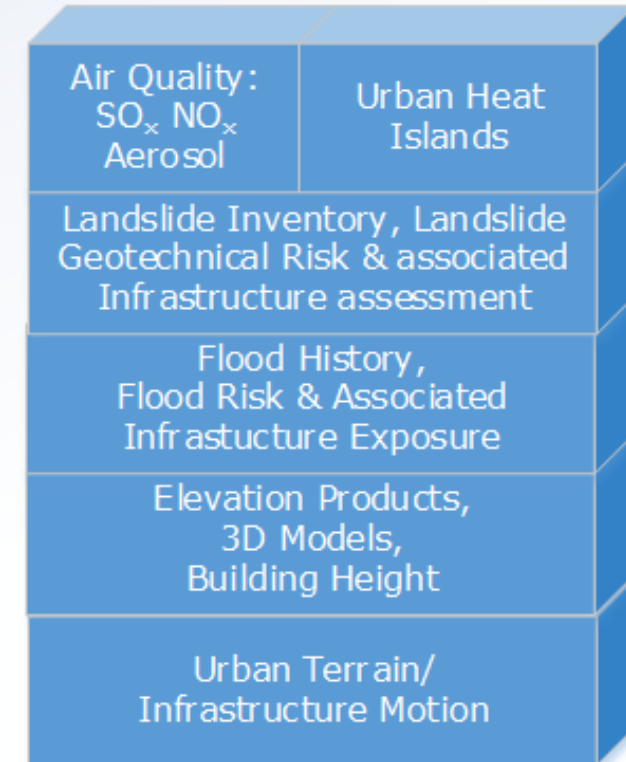


Derived Information and Special Products



SECONDARY PRODUCTS

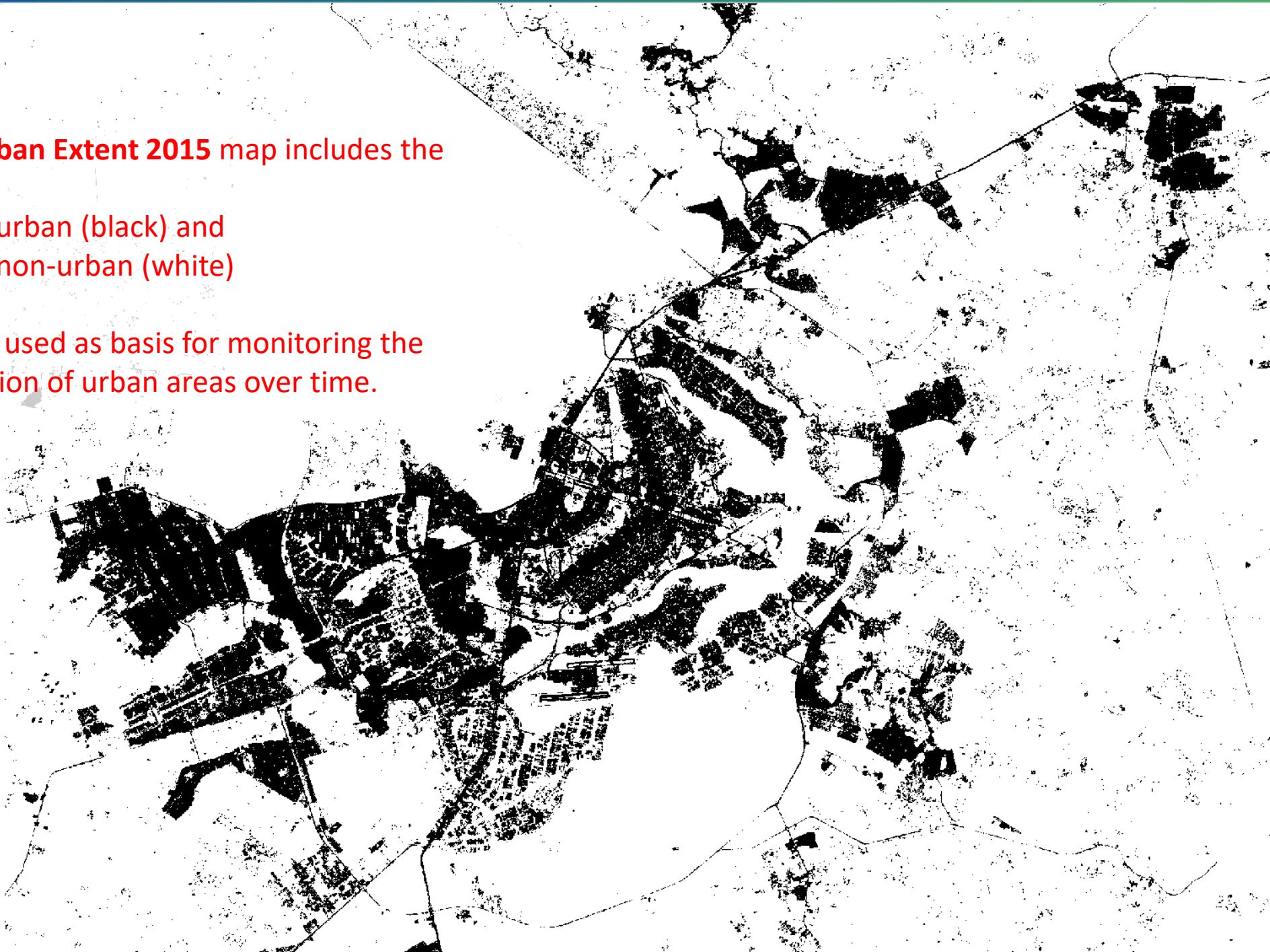
Special Information Products



The **Urban Extent 2015** map includes the classes

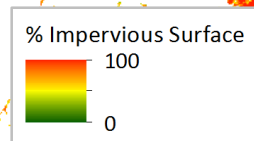
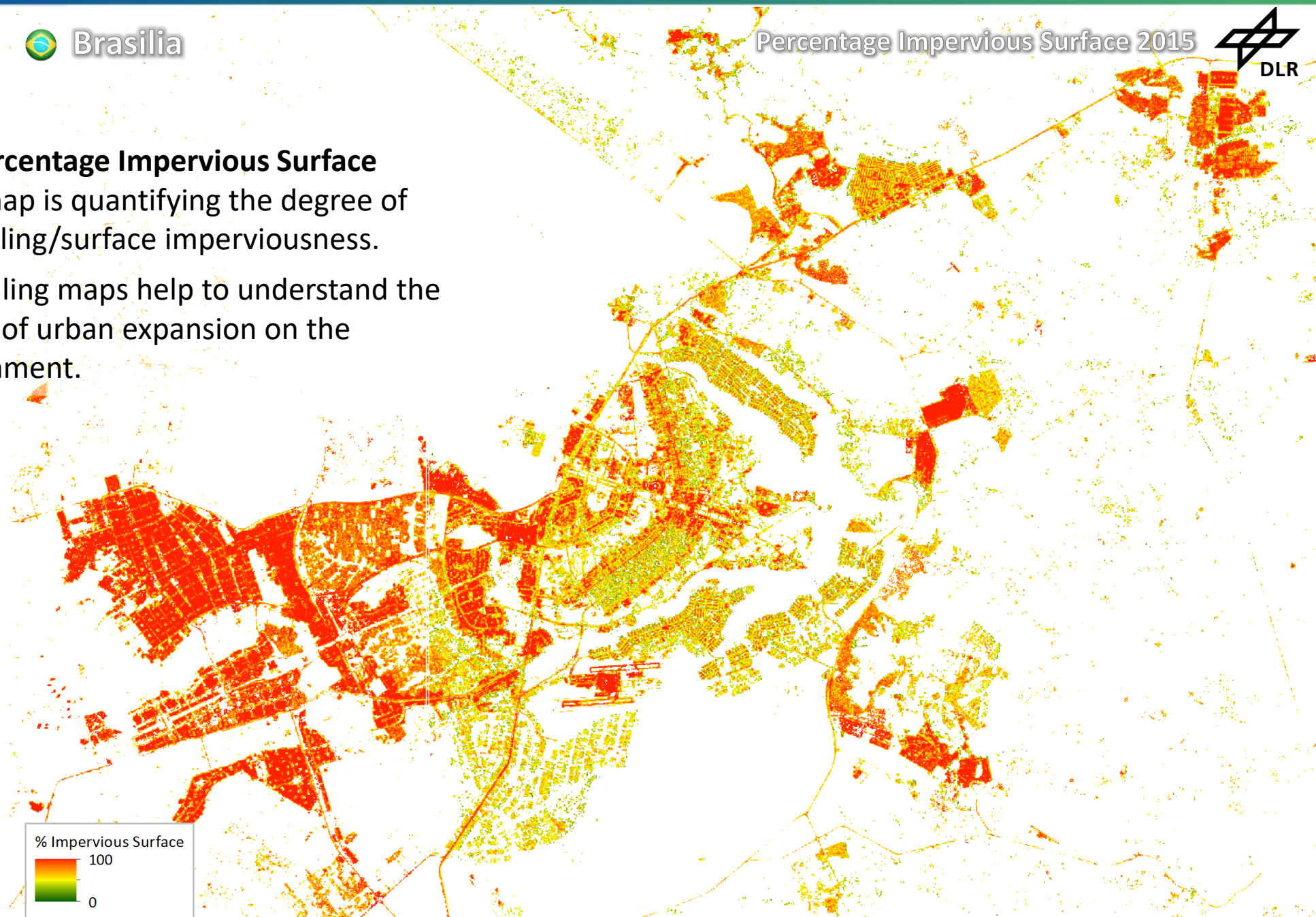
- urban (black) and
- non-urban (white)

Can be used as basis for monitoring the expansion of urban areas over time.



The **Percentage Impervious Surface 2015** map is quantifying the degree of soil sealing/surface imperviousness.

Soil sealing maps help to understand the impact of urban expansion on the environment.





Brazil



BRAZIL



PROJECT

Promoting Sustainable Cities in Brazil through integrated urban planning and innovative technologies investment

GRANT

US\$ 25 million

CO-FINANCING

US\$ 193 million

STATUS

Approved

CITIES

• Brasilia

• Recife



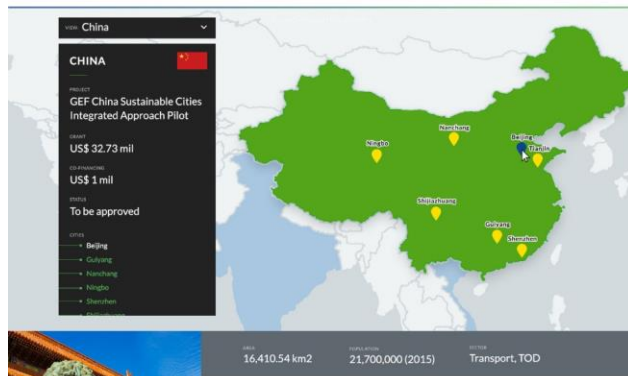
Cities



Knowledge Partners



DISCLAIMER



Beijing

Existing IFI initiatives

City sustainable development strategies

Population distribution

Buildings

Living standards

Education

Environment

City sustainable development strategy

Beijing is the capital of the People's Republic of China and the world's third most populous city. Towards the end of 2010, the city government announced a series of drastic measures to tackle traffic jams. As of December 2015, the Beijing metro system consists of 18 lines, 278 stations and 554 km of track in operation, with average daily ridership around 10 million passengers.

1. Rationis enim perfectio est virtus

The Second-phase Construction Plan of Beijing's Urban Rail network (2015-2021) was approved in 2015. According to this plan, there will be 24 lines at a total length of 998 km in operation by 2021. The GEF China Sustainable Cities Integrated Approach Pilot project will finance coordination both at the national level and among the city to further develop national policies, guidelines, strategies, and capacity building efforts for integrated urban and transport planning and TOD, and provide TOD technical support and TOD application, including harmonizing construction plans and operation schedules for better connection and integration of different public transit mode (i.e., Metro, BRT and regular buses).

2. Est enim effectrix multarum et magnarum voluptatum

Quare hoc videndum est, possine nobis hoc ratio philosophorum dare. Quod iam a me expectare noli. Quo modo autem optimum, si bonum praeterea nullum est? Esse enim quam vellet iniquus iustus poterat inquirere.

SHARE THIS

RELATED READINGS

Let's build the infrastructure that no hurricane can erase

Speak up, citizens of La Paz! Barrios de Verdad is listening

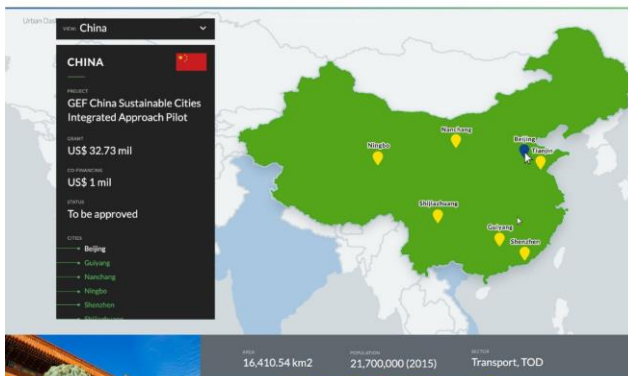
World Bank and UNICEF committed to fight childhood obesity in Mexico

FROM GPSC BLOG

Let's build the infrastructure that no hurricane can erase

Speak up, citizens of La Paz! Barrios de Verdad is listening

World Bank and UNICEF committed to fight childhood obesity in Mexico



RELATED READINGS

Let's build the infrastructure that no hurricane can erase

Speak up, citizens of La Paz! Barrios de Verdad is listening

World Bank and UNICEF committed to fight childhood obesity in Mexico

FROM GPSC BLOG

Let's build the infrastructure that no hurricane can erase

Speak up, citizens of La Paz! Barrios de Verdad is listening

World Bank and UNICEF committed to fight childhood obesity in Mexico



ABOUT

I'm a paragraph. Click here to add your own text and edit me. It's easy. Just click "Edit Text" or double click me to add your own content and make changes to the font. Feel free to drag and drop me anywhere you like on your page. I'm a great place for you to tell a story and let your users know a little more about you.

I'm a paragraph. Click here to add your own text and edit me. It's easy. Just click "Edit Text" or double click me to add your own content and make changes to the font. Feel free to drag and drop me anywhere you like on your page. I'm a great place for you to tell a story and let your users know a little more about you.

Read More

BASICS OF TOD

I'm a paragraph. Click here to add your own text and edit me. It's easy. Just click "Edit Text" or double click me to add your own content and make changes to the font. Feel free to drag and drop me anywhere you like on your page. I'm a great place for you to tell a story and let your users know a little more about you.

WHAT IS TOD?

I'm a paragraph. Click here to add your own text and edit me. It's easy. Just click "Edit Text" or double click me to add your own content and make changes to the font. Feel free to drag and drop me anywhere you like on your page. I'm a great place for you to tell a story and let your users know a little more about you.

Read More

WHY TOD?

I'm a paragraph. Click here to add your own text and edit me. It's easy. Just click "Edit Text" or double click me to add your own content and make changes to the font. Feel free to drag and drop me anywhere you like on your page. I'm a great place for you to tell a story and let your users know a little more about you.

Read More

TOD MYTHS

I'm a paragraph. Click here to add your own text and edit me. It's easy. Just click "Edit Text" or double click me to add your own content and make changes to the font. Feel free to drag and drop me anywhere you like on your page. I'm a great place for you to tell a story and let your users know a little more about you.

Read More

OVERCOMING TOD CHALLENGES

I'm a paragraph. Click here to add your own text and edit me. It's easy. Just click "Edit Text" or double click me to add your own content and make changes to the font. Feel free to drag and drop me anywhere you like on your page. I'm a great place for you to tell a story and let your users know a little more about you.

Read More



CASE STUDIES

TOOLS

RESOURCES

TOD THEMES