

# NATURE-BASED ECONOMIC DEVELOPMENT AND TOURISM



Leveraging green infrastructure systems to generate economic value, including through urban nature tourism, while supporting local livelihoods and city competitiveness.

The role of natural and cultural assets as drivers of sustainable development, examine the growth of the (urban nature) tourism economy, and how cities can unlock this potential through integrated, place-based strategies and urban regeneration interventions.

Lindie Buirski

[Lindie.Buirski@capetown.gov.za](mailto:Lindie.Buirski@capetown.gov.za)

Manager: Environmental Planning and Sustainability  
Environmental Management Department



CITY OF CAPE TOWN  
ISIXEKO SASEKAPA  
STAD KAAPSTAD

Making progress possible. Together



CITY OF CAPE TOWN  
ISIXEKO SASEKAPA  
STAD KAAPSTAD



**WELCOME TO CAPE TOWN**  
***A CITY OF HOPE***







- 1 BACKGROUND ›

---

- 2 CHALLENGES ›

---

- 3 WELL MANAGED CITY ›

---

- 4 WHAT MAKES CAPE TOWN UNIQUE ›

---

- 5 RESPONSIBLE TOURISM ›

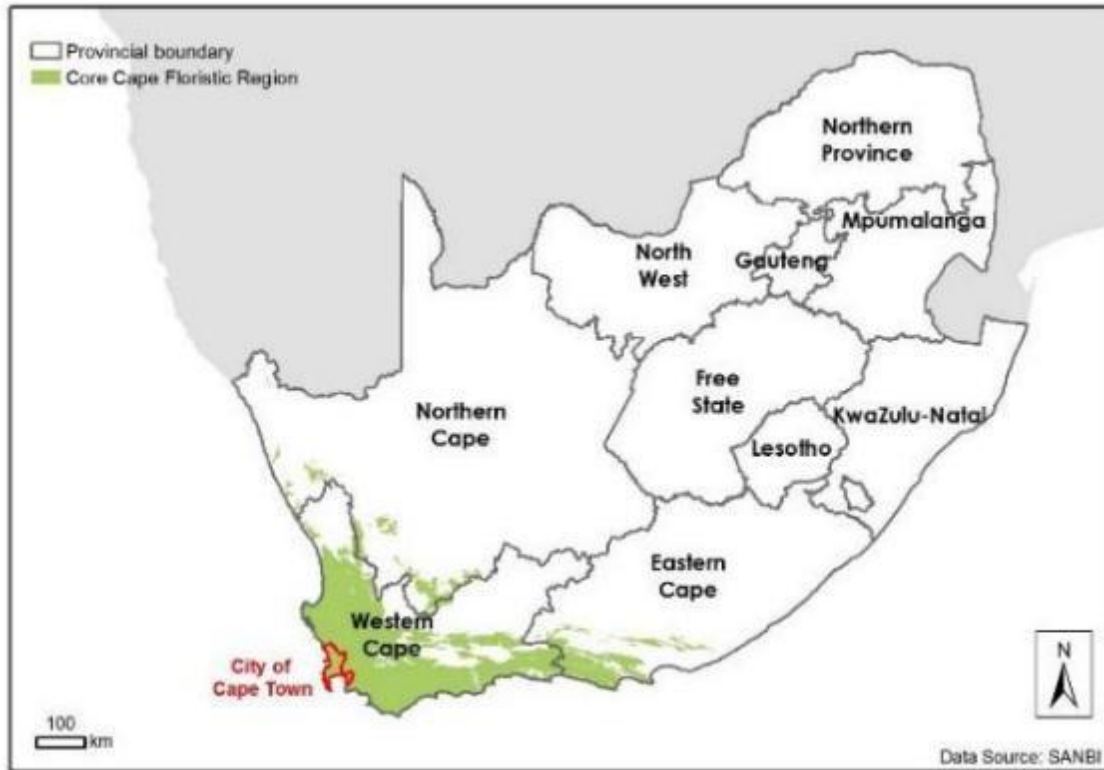
---

- 6 GREEN INFRASTRUCTURE TOURISM PROGRAMMES ›

---

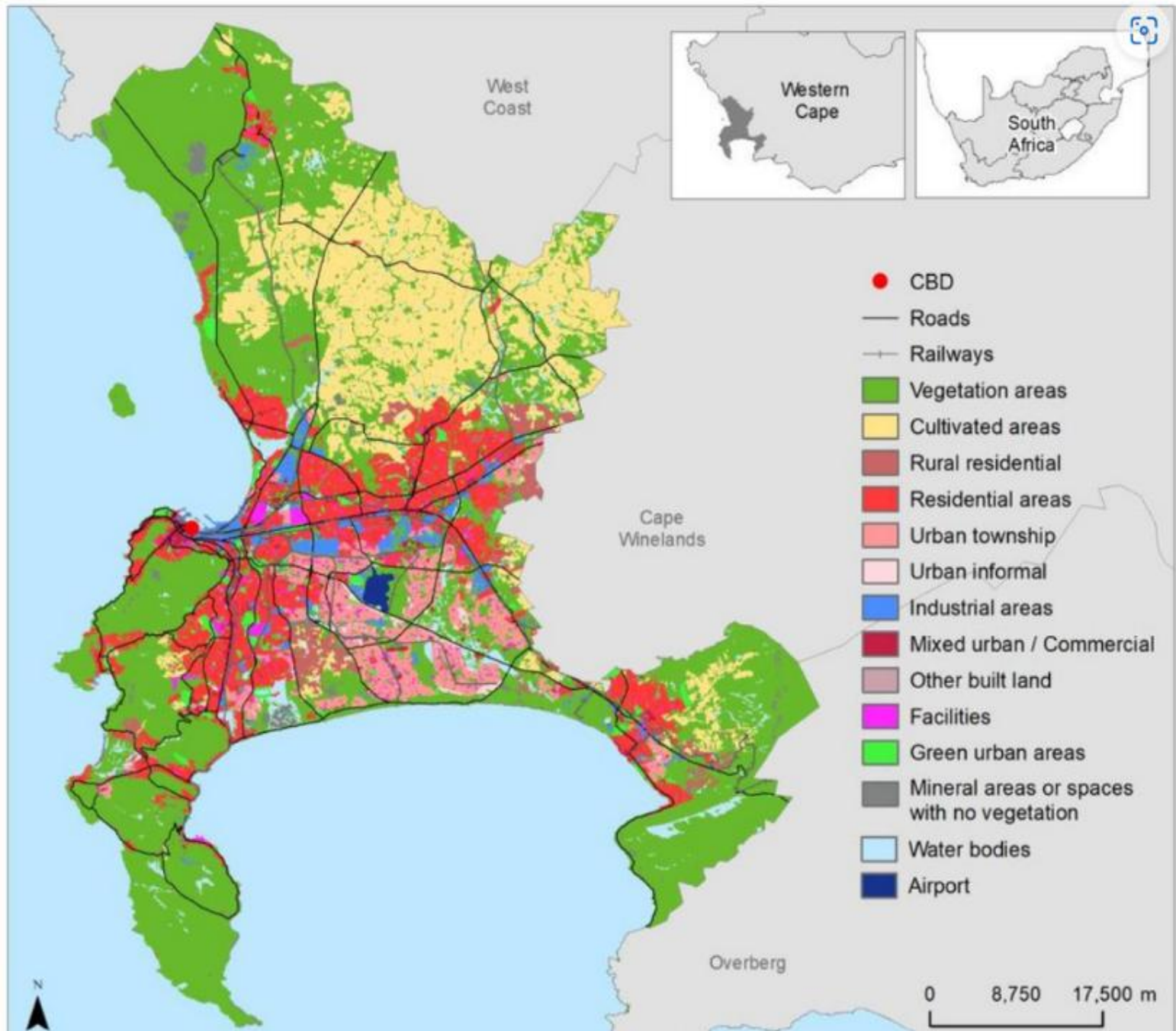
- 7 WAY FORWARD ›

# BACKGROUND



- **Southern-most** metropolitan municipality in Africa
- Situated in the **Western Cape Province** - 1 of 9
- Size - **2 450 km<sup>2</sup>**







# CHALLENGES

Cape Town faces significant municipal challenges, primarily driven by severe spatial inequality, safety and security issues, infrastructural backlogs, and climate vulnerabilities.

Major issues include heatwaves in summer, vulnerability to droughts, severe storms, fires (over 4 000 structural fires (formal and informal settlements) and over 8 000 vegetation and bushfires per year), land invasions, species loss, illegal dumping, pollution, waste management, affordable housing shortages, poverty, unemployment (26.8%), spatial segregation crisis, billing and service inefficiencies.

The city experiences significant ongoing net inward migration of about 40 000 people per year. Hoping on a better life and finding a job (economic opportunities).

Cape Town is the best run metropolitan municipality in South Africa and we will continue tackling these challenges with 'can do' attitude. Like we defeated a multi-year "Day Zero" draught (2015 to 2018). This once-in-a-century weather event brought the city to the brink of running out of municipal water. But together we made it through. We also managed the Covid 19 challenges by re-setting our operating models. We are indeed a City of Hope. Making progress possible – Together.

# BEST RUN CITY IN SOUTH AFRICA

## INTEGRATED DEVELOPMENT PLAN (IDP)

- Six priorities identified in the IDP, with programmes to deliver on them in support of the vision of a City of Hope.

### Public Space, Environment and Amenities

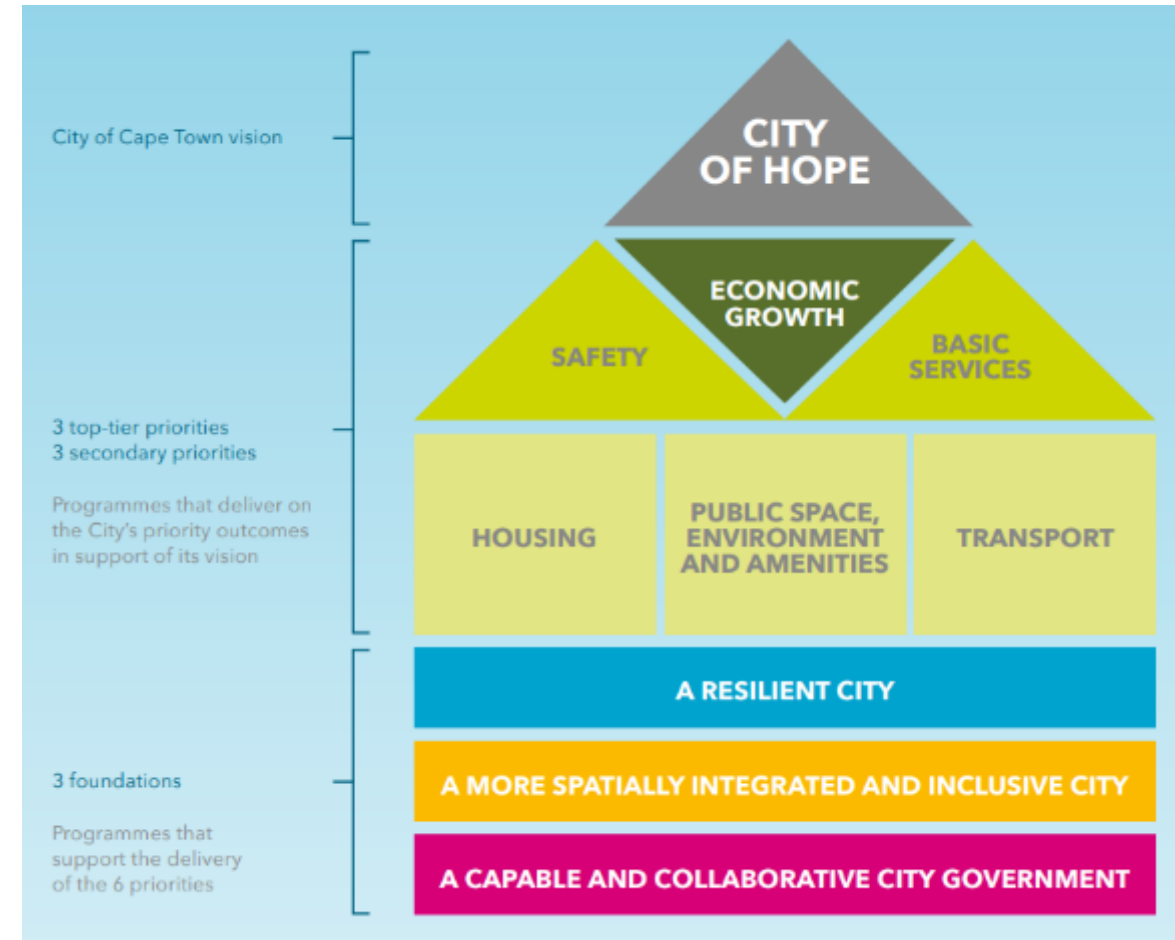
- Objective 9: Healthy and Sustainable Environment
- 9.1 Environmental management
- 9.1.A. Biodiversity Management
- 9.1.B . Green Infrastructure

### Objective 10: Clean and Healthy Waterways and Beaches

- 10.1 Healthy urban waterways
- 10.1.B. Waterway rehabilitation
- 10.2 Coastal programme
  - 10.2.A. Coastal infrastructure

### Objective 11: Quality and Safe Parks and Recreation

- Facilities supported by Community Partnerships.





# WHAT MAKES CAPE TOWN UNIQUE?

- **Unique** natural and cultural heritage
- Most **biodiverse** city globally
- **Ramsar Wetland City** with large river and wetland network
- **307 km** coastline – of which the City manages 240 km
- More than **1 350 ha** natural public green space
- Table Mountain National Park
- More than **55 000 ha** mostly publicly owned, accessible protected areas
- **2 World Heritage Sites** (TMNP, Robben Island)
- **1 Ramsar site**
- **14** district parks
- **354** greenbelts
- **16** Local Nature Reserves with 8 more to be proclaimed

# TABLE MOUNTAIN NATIONAL PARK

A NATIONAL  
PARK IN A CITY  
AND ALSO A  
WORLD HERITAGE  
SITE

---



**CAPE POINT  
TABLE  
MOUNTAIN  
NATIONAL  
PARK**





CITY OF CAPE TOWN  
ISIXEKO SASEKAPA  
STAD KAAPSTAD

# ROBBEN ISLAND - WORLD HERITAGE SITE



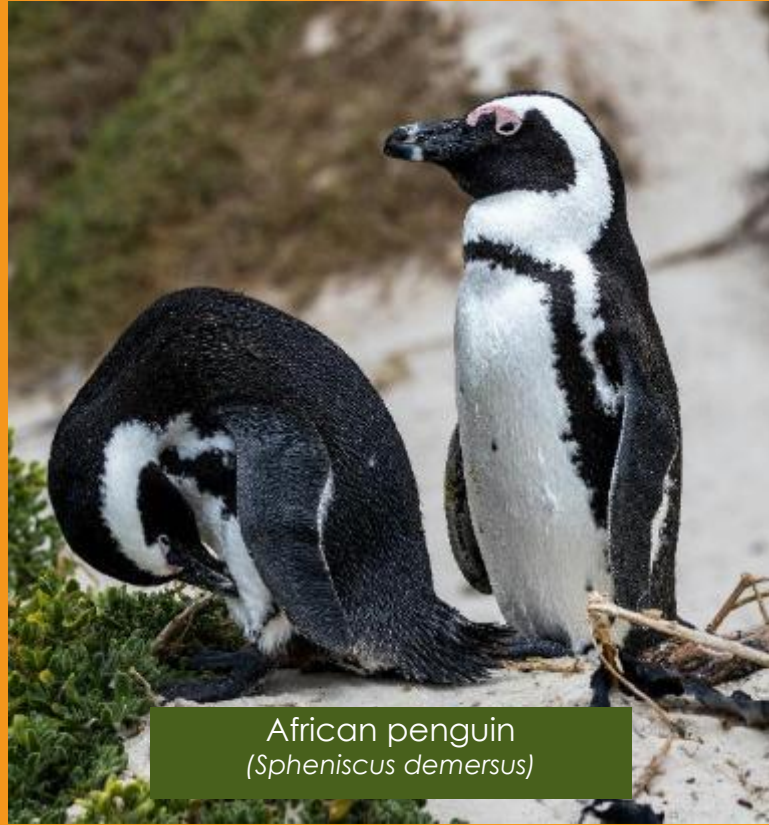


## **CITY OF CAPE TOWN NATURE RESERVES**

**16** LOCAL NATURE RESERVES WITH **8** MORE TO BE PROCLAIMED  
ONE OF THE RESERVES IS ALSO A **RAMSAR WETLAND**



Wine cups  
(*Geissorhiza radian*)



African penguin  
(*Spheniscus demersus*)



Western leopard toad  
(*Amietophrynus pantherinus*)

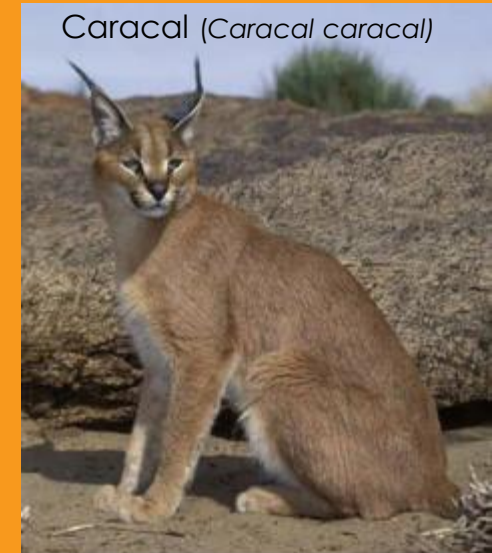


Daisy  
*Steirodiscus speciosus*

## AMAZING PLANTS & ANIMALS



Chacma baboon (*Papio ursinus*)



Caracal (*Caracal caracal*)

Making progress possible. Together

# AMAZING PEOPLE & HERITAGE

**History of the KAAPSE KLOPSE CAPE MINSTRELS**

**SLAVE ROOTS 1800s**

- Originated from enslaved Africans
- Cape Town
- Inspired by African American minstrel shows

**1907 EARLY PARADES**

- First New Year's parades in Cape Town
- Celebration of Emancipation & musical freedom

**CARNIVAL TRADITION 1940s-1960s**

- Growth of colourful troupes & competitions
- Iconic saeth suits, face paint & parasols

**MODERN REVIVAL 1990s-PRESENT**

- Revitalization & community unity
- Annual Tweede Nuwe Jaar celebrations

**APARTHEID ERA 1950s-PRESENT**

- Resilience & cultural pride under apartheid
- Parades defied segregation laws

**WhITES ONLY**

**Culture & Legacy**

- Music, Dance & Heritage
- Symbols of Hope & Joy



# TOURISM DEVELOPMENT FRAMEWORK 2030

- Cape Town's tourism economy flourishes, consistently recording above-average growth in revenues and employment, underpinned by environmental sustainability and community support for tourism.
- Tourism remains a cornerstone of Cape Town's economy. the sector contributed an estimated **R23 billion** in gross value add and directly employed **106 358 people**, equivalent to 6,2 % of total employment in the city.
- International tourist arrivals to increase at a compound average growth rate of 6% per annum from 1.40 million to 1,87 million.
- Domestic tourist arrivals to increase at an average 5% per annum from 1.44 million to 1.84 million.





# RESPONSIBLE TOURISM CHARTER

- Building a resilient city on the back of responsible tourism principles
- Building destination confidence and expanding community readiness
- Encourage the youth to consider tourism as a career through the schools programme, skills programmes and learnerships
- Launched the Responsible Tourism Charter and Pledge programme to unite industry, government and community efforts
- Support the Tourism Law Enforcement Unit and Band Aid Assistance Programme
- Develop a research agenda to generate relevant data and projections
- Air access expansion and growth into direct flights, increased passenger arrivals and growth in cargo
- Cruise Cape Town: growth as a port city and regional hub



# GREEN INFRASTRUCTURE PROGRAMME (GIP) CAPE TOWN

## Purpose:

The **protection and enhancement** of existing natural assets and the promotion and creation of new GI assets, in order to **underpin the sustainability** of Cape Town, enhance the city's living environment and improve its resilience to the effects of climate change.





# WHY GREEN INFRASTRUCTURE MATTERS FOR TOURISM

Green infrastructure in tourism integrates natural ecosystems - like parks, wetlands, and restored habitats into travel destinations to boost sustainability. By relying on nature-based solutions rather than traditional heavy development, destinations can lower their carbon footprints, protect local biodiversity, and provide immersive, eco-friendly experiences for travellers.

**Climate Resilience:** Natural buffers like mangroves and restored dunes protect coastal destinations against sea-level rise and extreme weather, safeguarding vulnerable tourism hubs.

**Resource Management:** Urban green spaces reduce stormwater runoff, filter water, and lower local temperatures (mitigating urban heat islands).

**Economic Growth:** Preserving and enhancing natural assets creates direct economic justifications for protected areas, driving revenue through eco-tourism wildlife viewing, and rural development.



#### LIVEABLE URBAN WATERWAYS

- Waterway rehabilitation
- Public realm upgrading
- Flood risk reduction
- Biodiversity restoration



#### INVASIVE SPECIES REMOVAL

- Water supply augmentation by reducing water loss
- Fire risk reduction



#### COASTAL DUNE REHABILITATION

- Coastal erosion and windblown sand management
- Restoring buffer function of dunes
- Biodiversity restoration



#### RIVER CLEANING PROGRAMME

- Weed and excess vegetation removal
- Litter traps/nets/ booms/fences
- Dredging/silt removal

# GREEN INFRASTRUCTURE IMPLEMENTATION PROJECTS

# LIVEABLE URBAN WATERWAYS (LUW) PROGRAMME

The LUW programme is a strategic and transversal programme for transformative change, which systematically, proactively and collaboratively rehabilitates waterways across Cape Town using water-sensitive design, green infrastructure and nature-based approaches





## SOURCE TO SEA HIKING TRAILS

- SILVERMINE RIVER



# DUNE REHABILITATION PROGRAMME

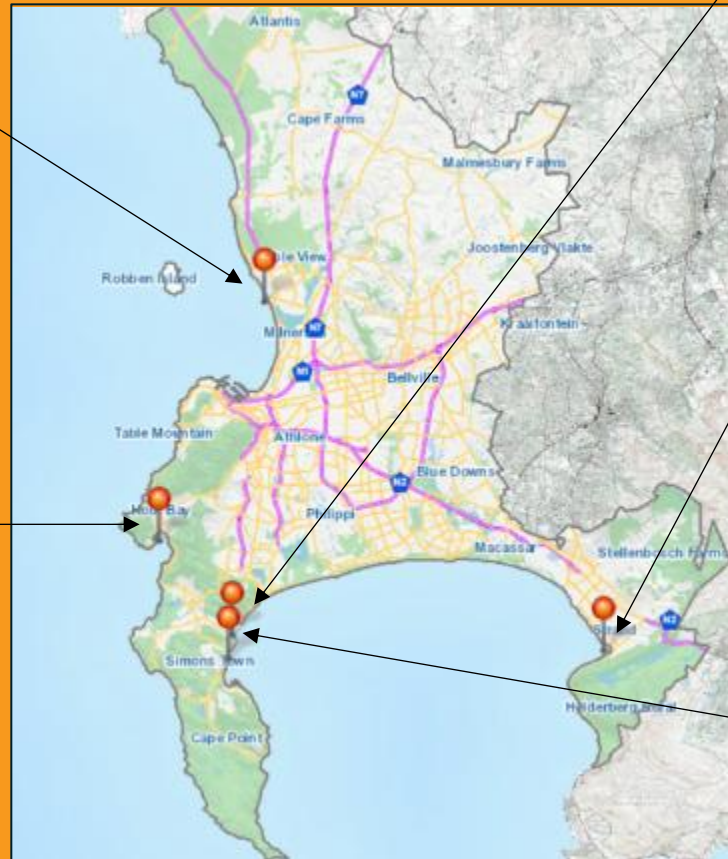


# DUNE REHABILITATION SITES (AS OF 2024)

Table View Dune Rehabilitation

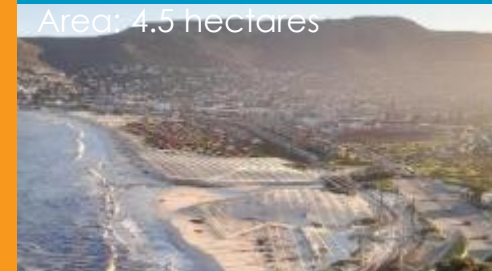


Hout Bay Dune Rehabilitation  
Area: 7 hectares



Fish Hoek Dune Rehabilitation

Area: 4.5 hectares



Gordons Bay Dune Rehabilitation

Area: 5 hectares



Glencairn Dune Rehabilitation

Area: 0.5 hectares



# DUNE REHABILITATION

## TOURISM WALKWAYS TABLE VIEW BEACHFRONT





# COASTAL TOURISM OPPORTUNITIES

307km coastline with beautiful beaches



# 6 COASTAL RESOURTS TO BE RE-DEVELOP



CITY OF CAPE TOWN  
ISIXEKO SASEKAPA  
STAD KAAPSTAD

Making progress possible. Together



# BLUE FLAG BEACHES



## BLUE FLAG BEACH AND MARINA PROGRAMME

- An international programme
- Cape Town has 8 Blue Flag beaches





# GREEN COAST PROGRAMME TOURISM ROUTE DEVELOPMENT

- The City's Blaauwberg Nature Reserve first Green Coast beach in SA (since 2019)
- It is a national programme run by the Wildlife and Environmental Society of SA (WESSA)





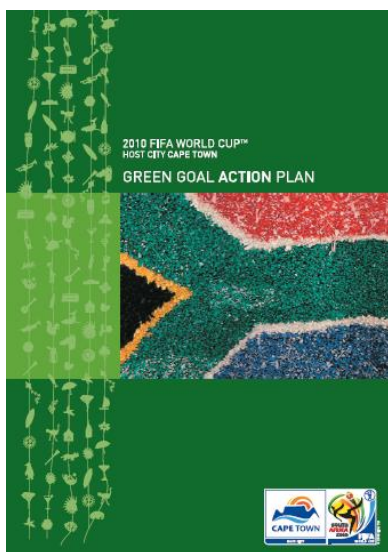
## **GREEN URBAN SPACES TOURISM - GREEN POINT PARK**

The Green Point Park is an inner-city park, vibrant, busy and safe space and serves all the people in the City, including tourist

# GREEN POINT PARK (GPP) CREATION – SOCCER WORLD CUP 2010 – FUNDING OPPORTUNITY



Green Goal programme with 42 projects formed part of the 2010 Soccer World Cup programme





# RECONFIGURED THE GREEN POINT COMMON AND CREATED A 12.5 HA MULTI USE PUBLIC PARK

- Biodiversity Showcase Garden
- Lighthouse walkway
- Springwater ponds
- Waterwheel
- Walking and cycling routes
- Park run
- Exercise
- Analemmatic sundial
- Public art
- Dog park
- Labyrinth
- Play parks
- Picnic areas
- Dome Education Centre
- Experiential education garden
- Etc.





# DOME EDUCATION CENTRE – OPENED IN 2024



# THE EXPERIENTIAL EDUCATION GARDEN (EEG)

---



Albert Einstein once said: *“Look deep into nature, and then you will understand everything better.”*

Research has shown a connection between people’s well-being and their exposure to nature. Studies reveal that children are healthier, happier and maybe even smarter when given the opportunity to interact with nature.

A little time outside is equally beneficial to adults’ stress levels and overall health and well being.

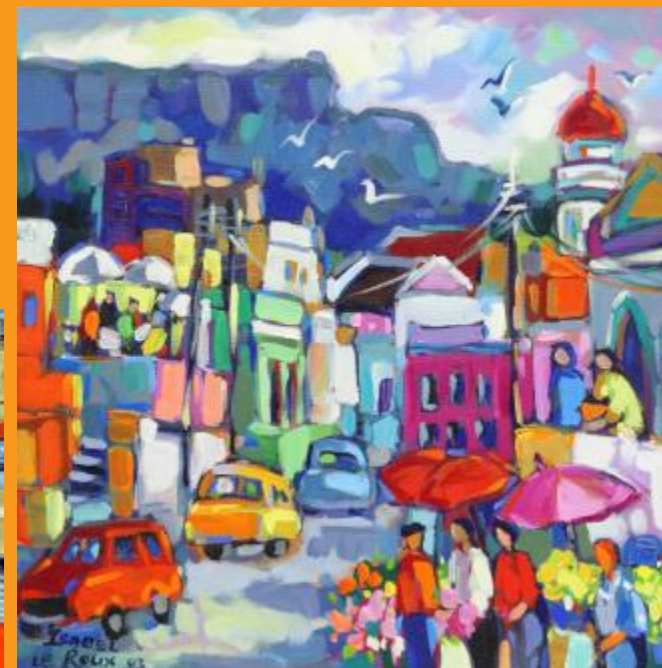
# THE EXPERIENTIAL EDUCATION GARDEN ELEMENTS





# HERITAGE TOURISM

## BO-KAAP





CITY OF CAPE TOWN  
ISIXEKO SASEKAPA  
STAD KAAPSTAD



Responsible Tourism  
Cape Town



**NELSON MANDELA  
IN CAPE TOWN -  
LEGACY EXHIBITION**

Making progress possible. Together.

# THE NELSON MANDELA IN CAPE TOWN – LEGACY EXHIBITION



Making progress possible. Together

# CITY HALL



Making progress possible. Together

ROUTE MAP | WATER HERITAGE ROUTE TOUR OF CENTRAL CAPE TOWN 2021



- |  |   |
|--|---|
| 1. COMPANY'S GARDEN – WELL & PUMP                          | 8. GREEN MARKET SQUARE – WELLS  |
| 2. NEW CAPE DUTCH VEGETABLE GARDEN                         | 9. BISSCHOP SQUARE – WELL   |
| 3. TUYNNHUIS CANAL/DRAUGHT & FOOTBRIDGE                    | 10. ADDERLEY STREET FOUNTAIN  |
| 4. AVENUE CHANNELS/FURROW & CULVERTS                       | 11. PLACE OF PREVIOUS SHORELINE   |
| 5. SITE OF PUMP WELL & OLD WATERMILL                       | 12. WAGENAR'S RESERVOIR   |
| 6. OLD SLAVE LODGE & WELL & TANKS                          | 13. GRAND PARADE WELLS/FOUNTAINS & OLD DRAUGHT REMNANTS                     |
| 7. QUEEN VICTORIA ST – WATERCOURSE THAT IN THE PAST FED CG | 14. CASTLE – WELLS, PUMPS, POOL, MOAT AND BRICKED-IN TUNNELS INFRASTRUCTURE |

# WATER HERITAGE WALKS





CITY OF CAPE TOWN  
ISIXEKO SASEKAPA  
STAD KAAPSTAD



HERITAGE SERIES: PLACES AND WALKS

## COMPANY'S GARDEN AND PRECINCT WALK

# THE COMPANY'S GARDEN

## A HERITAGE AND NATURE HUB IN THE MIDDLE OF A CITY





## A TRIUMPH ALL ROUND

Innovation, imagination and pure genius make the new Dome Education Centre a feat of engineering. See page 18.

## THE DOME EDUCATION CENTRE

COMMEMORATING THE FIRST NATION'S KHOEKHOEN  
HERITAGE – IN DEVELOPMENT



CITY OF CAPE TOWN  
ISIXEKO SASEKAPA  
STAD KAAPSTAD

# TOURISM PROMOTIONAL PUBLICATIONS HERITAGE AND BIODIVERSITY ARTICLES

## THIS IS CAPE TOWN

VOL. 3: September 2026



2ND BEST CITY IN THE WORLD TO LIVE, WORK AND PLAY TIME OUT ANNUAL RANKING OF 50 BEST CITIES

- Visit**  
Incredibly beautiful. Culturally rich.
- Live**  
World class gastronomy with breathtaking views.
- Work**  
Digital nomad? This is your place.
- Study**  
A class act.
- Play**  
Chilled or thrill? It's all in one place.
- Invest**  
Investment opportunities abound.

THIS IS CAPE TOWN

## CAPE TOWN'S UNIQUE AND AMAZING BIODIVERSITY

**Cape Town is the most biodiverse city in the world! This may seem like quite a claim, but in Cape Town this bold statement is indeed backed by hard facts and evident in the incredible natural beauty.**

The city, which covers approximately 2 463 km<sup>2</sup>, is home to over 2 000 plant species and 20 distinct vegetation types. Astonishingly, seven of these vegetation types and almost 200 plant species occur only within the city boundaries and nowhere else in the world. The extremely high biodiversity richness is dictated by a variety of soil and habitat types. Consequently, the mountainous areas contain very different biodiversity to the lowlands. It is in these lowland areas where there has been significant historic habitat transformation, sadly resulting in a globally recognised conservation crisis. Of the 400 plant species that are classified as being threatened with extinction within the city, the majority occur on these lowland areas.

The diversity of habitat also supports a wealth of original fauna. An incredible 74 indigenous species of mammal occur within Cape Town's municipal boundaries. This includes numerous charismatic animals such as caracal, Cape cliffswallow and honey badger. Hyaenatomys, island and red harebustard that were locally extinct have also been reintroduced to specific protected areas. In addition, approximately 400 bird species, 62 reptile species and 28 species of frog also call the city home.

Astonishingly, four of the frog species are endemic to the city, which means they are found nowhere else in the world. Having four endemic vertebrates within the boundaries of a metropolitan municipality is extremely special.

The richness and uniqueness of the city's irreplaceable biodiversity is also acknowledged by the fact that there are four IBAs (Important Bird and Biodiversity Areas) and a national park within Cape Town. In addition, three biosphere reserves cover the city boundaries. Cape Town is in the heart of the Cape Floral Region which has been declared a World Heritage site due to it being one of the great centres of terrestrial biodiversity on Earth. The significance of the wetlands contained within the city has also been recognised through the awarded Ramsar Wetland City

status, augmenting the existing designated Fynbos Bay Nature Reserve Ramsar site. These Ramsar sites are wetlands that have been designated to be of international importance under the international Ramsar convention.

The City of Cape Town and its conservation partners have been innovative in the proactive protection of this immense natural heritage. There are currently in excess of 16 000 ha in the conservation estate in Cape Town, and all hands are on deck trying to secure remaining critically important biodiversity areas. The City of Cape Town is the custodian of 23 nature reserves which range in size from 8 000 ha at Simons Nature Reserve to the small and unique Sidiha Sikekhele Nature Reserve. A very successful conservation stewardship programme forms part of the conservation efforts, where work with private land owners further the conservation of private land.

It is of paramount importance that we conserve our unique natural heritage in Cape Town if we are to remain a sustainable city into the future, and in order for future generations of residents and visitors to enjoy and benefit from this immense biodiversity.



The vibrant coral papaya (*Mimros capensis*) and beautiful orchid (*Leucostemum gonggong*) in Simons Nature Reserve.



The world's smallest protea – the Swartland sugarbush (*Protea adnata*). This critically endangered species is only found in Cape Town and the population in the wild declined to only four individuals. Through intense management there are now 13 plants in the wild. Still a very precarious situation!



THIS IS CAPE TOWN



King Protea (*Protea grandis*)



Flowers glory (*Mosses vivicola*). Vulnerable



Protea rosea (*Mosses vivicola*). Vulnerable



City wateria (*Mosses humilis*). Critically endangered



King wateria (*Mosses humilis*). Critically endangered

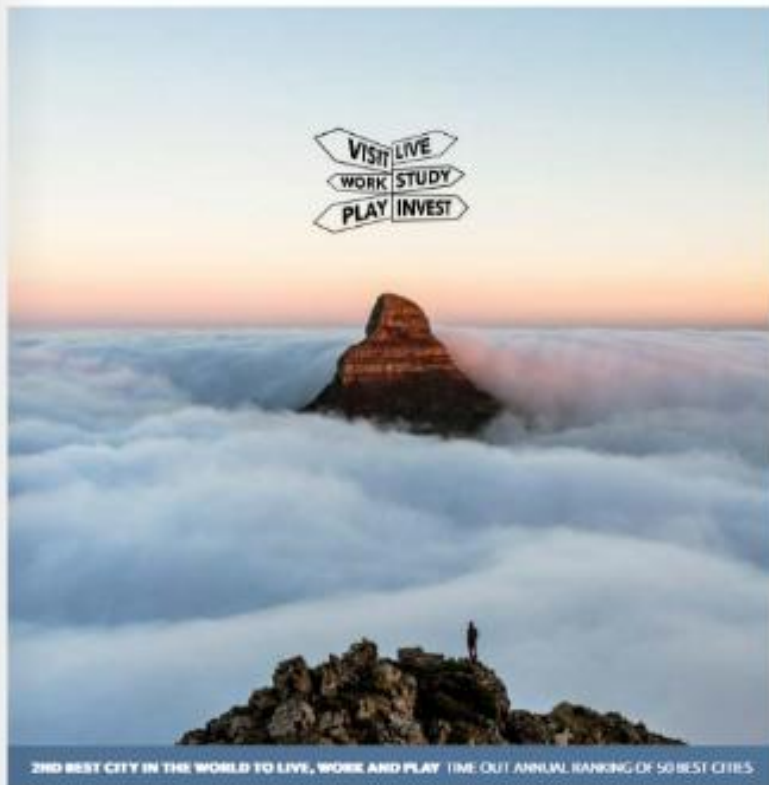


CITY OF CAPE TOWN  
ISIXEKO SASEKAPA  
STAD KAAPSTAD

# TOURISM PROMOTIONAL PUBLICATIONS HERITAGE AND BIODIVERSITY ARTICLES

## THIS IS CAPE TOWN

VOL. 2: April 2024



2ND BEST CITY IN THE WORLD TO LIVE, WORK AND PLAY TIME-OUT ANNUAL RANKING OF 50 BEST CITIES

<b>Visit</b> Breath-taking scenic views Cultural richness	<b>Live</b> World-class governance with inspiring views	<b>Work</b> Digital nomads? This is your place	<b>Study</b> A class act	<b>Play</b> Chilled or thrill-seeking It's all in one place	<b>Invest</b> Investment opportunities abound
--	--	--	-----------------------------	---	---

THIS IS CAPE TOWN

## THOUGHT GREEN POINT PARK COULDN'T BE MORE PERFECT?

**G**reen Point Park, already a firm favourite with locals and visitors wanting to reconnect with nature, is about to become even better with an experiential education garden and one of a kind dome classroom.

As the world continues to grapple with the impact of climate change and the loss of biodiversity, it is becoming increasingly important to find innovative ways to reconnect people, especially children, to the environment. After all, studies have repeatedly shown that spending time in nature can make us humans a happier, healthier, and even a smarter bunch.

**Cape Town already boasts a fantastic destination in which city residents and visitors can experience this closer connection to nature, in the form of the Green Point Park. Now, after many years of planning and coordination, the park is about to become home to another inspiring installation designed to deepen our connections to our environment, and our past.**

The Experiential Education Garden (EEG) is an innovative project currently being built on the edge of Green Point Park. When completed, it will serve as an outdoor environmental educational space for learners and a safe place for visitors to immerse themselves in nature.

The idea for the EEG and dome started in 2016, since then the project has attracted plenty of support. And now, through dedication and determination, the EEG is well on its way to completion. When completed, the project will provide a unique opportunity for children and adults alike to enjoy nature's classroom and learn about the environment in a highly tactile and immersive way in a safe space. And the EEG isn't just an outdoor classroom, it also boasts a unique indoor learning environment known as the dome classroom.

Designed to mirror the traditional dwellings of the Xhosa, the dome pays tribute to their heritage as a South African First Nations group.

The dome is a unique and very impressive structure. It is made up of 20 massive curved timber beams that come together at the top in a ring of timber. These are anchored to the base of the dome with steel brackets. The beams slot into the upper ring with large dovetail joints, and the timber ring at the top is in fact a piece of iron cast-iron ring, built from 20 angled segments that are cross-laminated for strength. This type of dome structure has never been built in South Africa before, which makes it especially appropriate that the first one is being constructed in Cape Town – the design capital of the world.

THIS IS CAPE TOWN



# WAY FORWARD

- New project identification
- Tourism linked green infrastructure programme development
- Budget allocations
- Human resources development and job creation
- Public participation processes
- Increase environmental education and capacity building programmes
- Training programmes e.g. Tourism, plant propagation, horticulture and small business development learnerships to empower community members and creating economic opportunities





# WESTRIDGE PARK EDUCATION CENTRE AND OUTDOOR CLASSROOM DEVELOPMENT IN MITCHELL'S PLAIN



# CONCEPT DESIGN

---





CITY OF CAPE TOWN  
ISIXEKO SASEKAPA  
STAD KAAPSTAD

# THANK YOU

---



**ANY QUESTIONS?**

