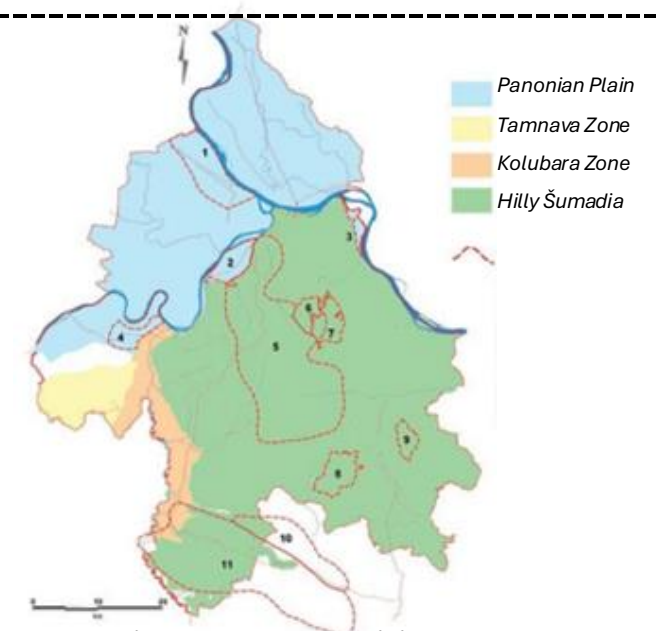
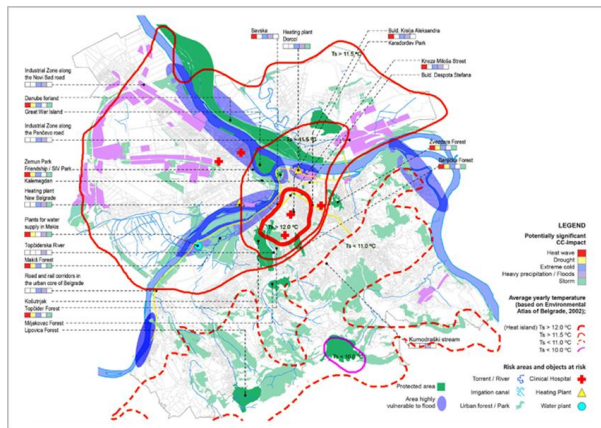


# SLIDE 1: KEY CHALLENGES

**CITY : Belgrade; COUNTRY : Serbia** – A metropolitan area with 1.7 million inhabitants, covering more than 3,200 square kilometres across 17 urban municipalities, consisting of two distinct natural systems — the Pannonian Plain and hilly Šumadija — and situated on two rivers Sava and Danube.

- The key challenge is preserving existing green areas and preventing their fragmentation and disconnection.
- Main cause of challenge is increased urbanisation, density, and spread of urban area due to the growing city population.
- Additional challenge is lack of data regarding green infrastructure elements.



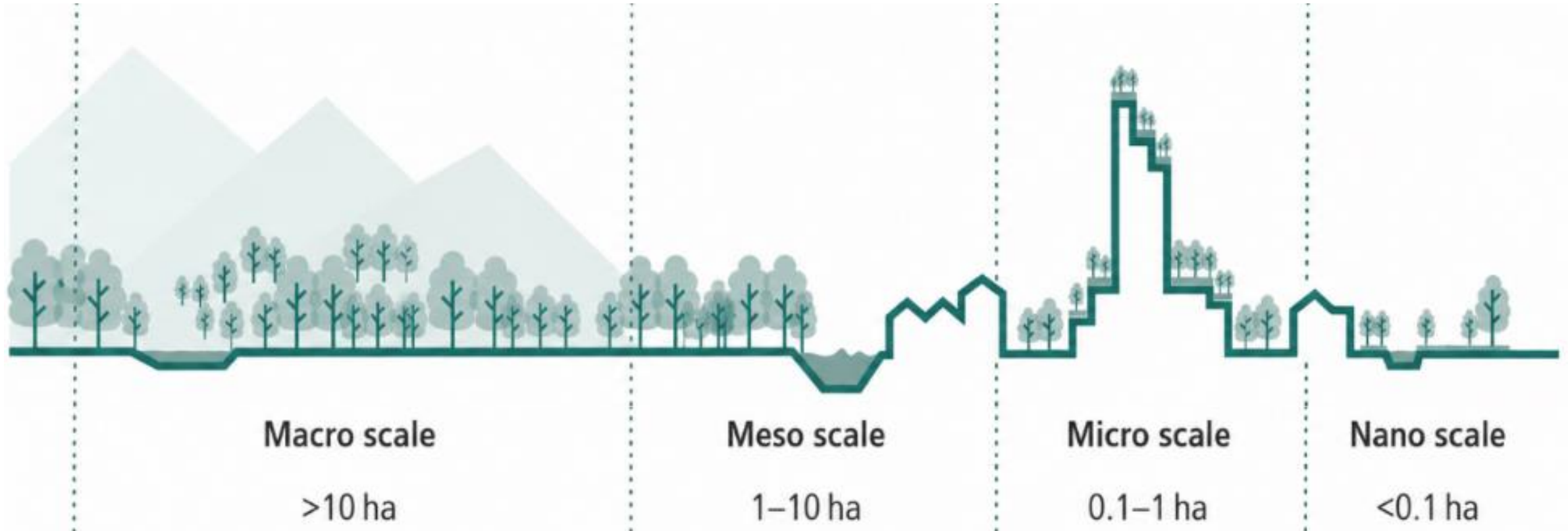
## The City Assembly of Belgrade adopted:

- Action Plan for Adaptation to Climate Change with Vulnerability Assessment (2015)
- General regulation plan for Green Areas System of Belgrade (2019)
- Green Infrastructure Strategy (2024)



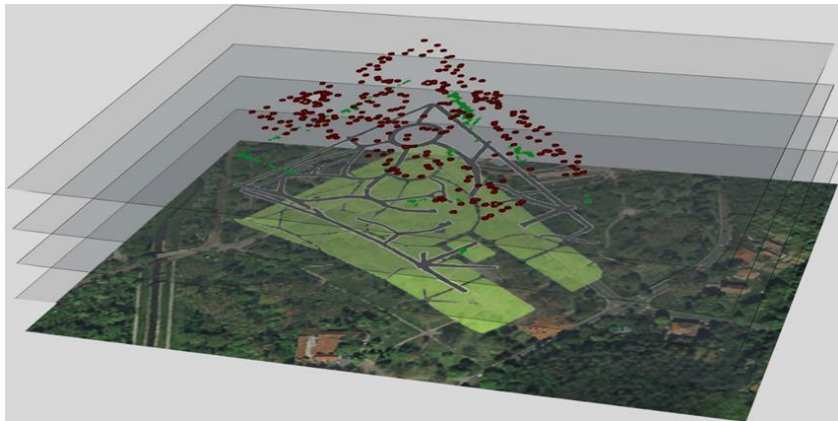
# SLIDE 3: PRIORITY ACTIONS

- **Macro scale** Development of an integrated system for green infrastructure planning based on relevant data.
- Green infrastructure principles integrated into the planning process.
- Guidelines for planning and landscape architectural design of green infrastructure.
- **Nano scale** pilot projects (pocket park, green roofs, green school streets)



## SLIDE 4: IMPLEMENTATION SUPPORT NEED

- Cooperation with technical experts to develop relevant knowledge- and data-based systems, as well as with global partners to secure funding resources.
- Exchange of experience with global partners on pilot initiatives and to develop guidelines for the planning and landscape architectural design of GI, followed by training programmes for relevant engineers and planners.
- Support of the relevant ministries to change national regulations to support development of adaptive governance mechanisms for all green infrastructure elements and its monitoring.



# City of Novi Sad, Serbia



A City That Lives in  
Harmony with Nature



**NOVI SAD**  
**WETLAND CITY**  
RAMSAR CONVENTION

**Vanja Petković,**  
Member of the City Council in charge  
of Ecology, Energy Efficiency and  
Environmental Protection

Address: Trg slobode 1, Novi Sad,  
Serbia

+381 21 525 745, 525 934

e-mail: [vanja.petkovic@novisad.rs](mailto:vanja.petkovic@novisad.rs)



# KEY CHALLENGES IN CITY OF NOVI SAD

**CITY:** City of Novi Sad

**COUNTRY:** Serbia

**Key Challenge:**

Connect urban areas, city parks, the Danube River, and surrounding wetlands into an integrated green infrastructure network to improve access to nature and support sustainable tourism.

**Opportunity:**

Novi Sad has strong potential to develop a connected green network that enhances biodiversity, climate resilience, and quality of life.

**Approach (Green Infrastructure & Nature Tourism):**

Developing green corridors, cycling and walking routes, nature-based tourism activities, and environmental education programs can strengthen connectivity between urban and natural areas while promoting sustainable and environmentally friendly tourism for both residents and visitors.

Novi Sad has a well-developed cycling infrastructure, a strong cycling culture, and supports bicycle use through subsidy programs, contributing to sustainable mobility and improved air quality.



Through the City's bicycle subsidy program, around 8,000 bicycles have been purchased.



# PRIORITY ACTIONS

## Priority Actions

### 1. Connecting the city, natural areas, and wetland ecosystems through educational infrastructure

Develop and establish a “nature classroom” within or near protected wetland areas to support educational programs, workshops, and school visits. The facility would be based on sustainability principles and the use of renewable energy, with the aim of strengthening environmental education for citizens and students, supporting the Wetland City accreditation objectives, and bringing wetland values closer to the urban population.

### 2. Improving access and sustainable mobility to wetlands and natural areas

Introduce sustainable mobility solutions to connect the urban center with protected natural and wetland areas, including e-bikes, charging stations, and improved cycling infrastructure. The goal is to facilitate low-impact access to wetlands and nature while promoting sustainable travel for both residents and visitors, in line with Wetland City principles.



# IMPLEMENTATION SUPPORT NEED

## Implementation needs, partnerships, and support

- **Institutional coordination:** Better cooperation between city departments and environmental agencies.
- **Education partnerships:** Work with schools, universities, and NGOs on programs like the “nature classroom.”
- **Technical and financial support:** Funding and expertise for green infrastructure and sustainable mobility.
- **Wetland management:** Protection and restoration of key wetland areas (Koviljsko-Petrovaradinski Rit, Begečka Jama).
- **Tourism partnerships:** Development of low-impact nature-based tourism aligned with Wetland City goals.



# SLIDE 1: KEY CHALLENGES

## CITY: Zrenjanin | COUNTRY: Serbia

### Strategic Development Framework — Green Agenda

- Opportunity: To enhance the attractiveness of the city centre for both residents and visitors by connecting key natural assets: the river Begej and three lakes, with the unique Dry Bridge, which remained on the land due to the river course alteration
- Approach: Develop green corridors that connect natural capital assets, revitalize waterfronts with high-quality public amenities for residents and visitors, and strengthen the link between urban and peri-urban areas.



## SLIDE 2: KEY TAKEAWAY FROM THE ACADEMY

**CITY: Zrenjanin | COUNTRY: Serbia — A city shaped by water, with a unique network of rivers, lakes, and green corridors at the heart of its transformation vision.**

- Singapore — “City in Nature”: The Singapore case study demonstrated how a city can systematically integrate green and blue corridors with cultural heritage landmarks and public spaces to create a coherent, high-quality urban nature network. For Zrenjanin, this approach is directly applicable: the Begej river, the three urban lakes, and the Dry Bridge represent the backbone of a potential nature network that, when connected through landscaped promenades and cycling and pedestrian paths, can become a defining feature of city identity, serving both residents and visitors., revitalization of river at new center and connecting green and blue corridors and cultural monuments as narrative to make story
- Paris – focus on river Sena, pedestrian areas and cycling (adding orange infrastructure)

# SLIDE 3: PRIORITY ACTIONS

Precondition: Preparation of engineering and technical documentation and obtaining all required permits.

- The river Begej waterfront development - embankment landscaping (construction of paved promenade and illumination, greening along the promenade, benches, reparation and decoration of two bridges on the path, plaza at the lower part of the square Zoran Djindjic ), riverfront revitalization, waterfront access, throughout the river flow in the city centre
- The three lakes in the city centre - embankment landscaping, illuminated fountains, waterfront access, reparation and illumination of the Dry Bridge, benches



## SLIDE 4: IMPLEMENTATION SUPPORT NEED

- Funding — National and international financing, including the identification and development of public-private partnership models and co-financing frameworks for waterfront and green infrastructure investment.
- Partnerships:
  - Public sector: Vode Vojvodine, because the waters are their scope of authority
  - Academic and research institutions; young artists and creative communities for public space animation and co-design.
  - Innovators (ekoteretana)
  - Structured citizens' consultations and participatory planning processes to ensure community ownership of the revitalization vision.
- Site visits and exchange of experience and good practice (Seoul, Brazil, Singapore)