



Local Governments  
for Sustainability

# Measuring Progress, Driving Transformation: *The ISUDA Aggregated Report*

*Strategic Insights for the GEF  
Sustainable Cities Program*

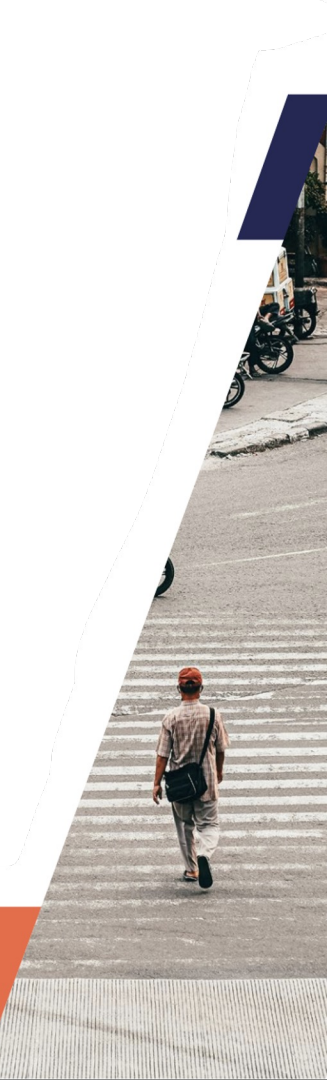
*By: Ingrid Coetzee  
Date: 3 June 2026  
Samarkand*



# WHAT IS ISUDA?

*ISUDA is the official research component of UrbanShift, led by ICLEI.*

- /// Assesses subnational commitment to **Integrated Sustainable Urban Development (ISUD)**.
- /// **Tracked 23 cities** across Latin America, Asia, and Africa over a multi-year timeline.
- /// **Evaluates multiple dimensions** across climate risk management, infrastructure investment, public inclusivity, and global connectivity.



# MOVING BEYOND BENCHMARKING

**/// Championing integrated approaches:** Focused on synergies across multiple areas of city design and management.

**/// A diagnostic tool:** Identifies structural gaps for cities, GEF partners, and implementing agencies.

**/// The ultimate goal:** Moving from generic global urban funding to highly targeted, implementation-oriented programming.



# What Makes This Report Different?

## Longitudinal Design

Fundamentally stands out by measuring *actual structural change over a multi-year timeline* instead of static, one-off snapshots.

## Contextual Tagging System

Rejects one-size-fits-all approach by tracking cities across three fixed structural variables: *Geographic Typology*, *Development Context*, and *Infrastructure & Density*.

## Action-Oriented Approach

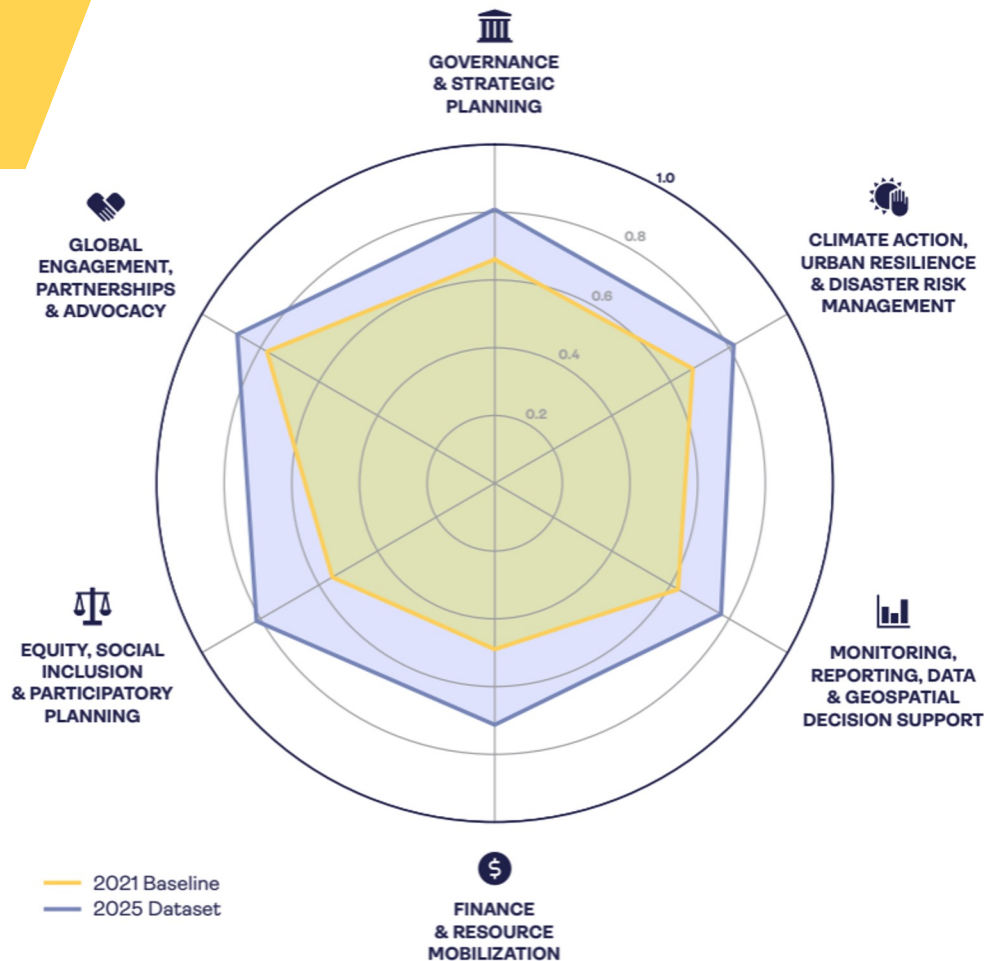
Prevents inappropriate policy transfer and ensures that investment matches a city's specific physical baseline.

# KEY FINDINGS

# 87%

**20 out of 23 cities** (87%) demonstrated **quantifiable improvement in their overall ISUDA scores over the 5-year tracking period**; these were distributed across all dimensions.

Diagram: Dimension profile between 2021 and 2025



# DIVERSE CONTEXTS, REGIONAL NUANCES

## Latin America

Robust growth across all dimensions signaling strong commitment to ISUD. Despite data/geospatial improvements, cities face barriers from siloed data, necessitating targeted digital integration.

## Africa

Rapid, unmanaged demographic growth; urgent need for basic infrastructure resilience and institutional alignment.

## Asia

Leads the cohort in data-informed decision support, but these cities must prioritize "leveling-up" actions to effectively maintain and scale their current momentum.

# FROM FINDINGS TO RECOMMENDATIONS

*5 Cross-Cutting Enablers to address the four main challenge clusters.*



**Institutional  
Capacity and Multi-  
Level Governance**



**Geospatial Data  
and  
Digitalization**



**People Centered  
and Inclusive  
Governance**



**Innovative  
Finance**



**Institutional  
Capacity and  
Partnership  
Development**





# Thank you!

**Pourya Salehi**

Head of Urban Research, Innovation, and  
Development  
[pourya.salehi@iclei.org](mailto:pourya.salehi@iclei.org)

